

# SPECIFICATION

FOR

AUSTRALIAN/NEW ZEALAND POWER SUPPLY CORDSET (PB FR)

CORD : CIRCULAR ORDINARY V-75 3X0.75mm<sup>2</sup> PVC LEAD FREE

CUSTOMER : VPE/RS COMPONENTS

CUSTOMER'S PART No. : 1468802(V-NOVUS AUST-C13 5M)

VOLEX'S SPEC. REF. No. : 176918

ISSUE No. : 006

DATE : 17TH SEPTEMBER 2018

CUSTOMER APPROVED :

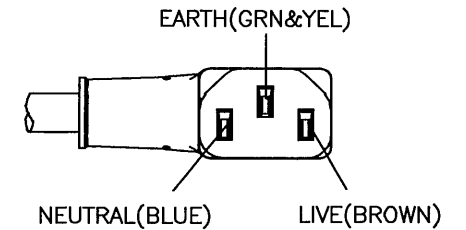
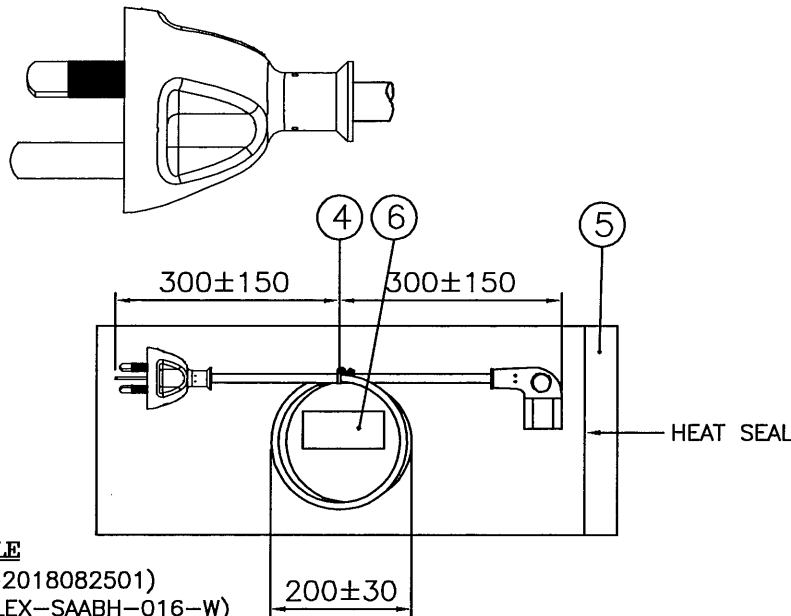
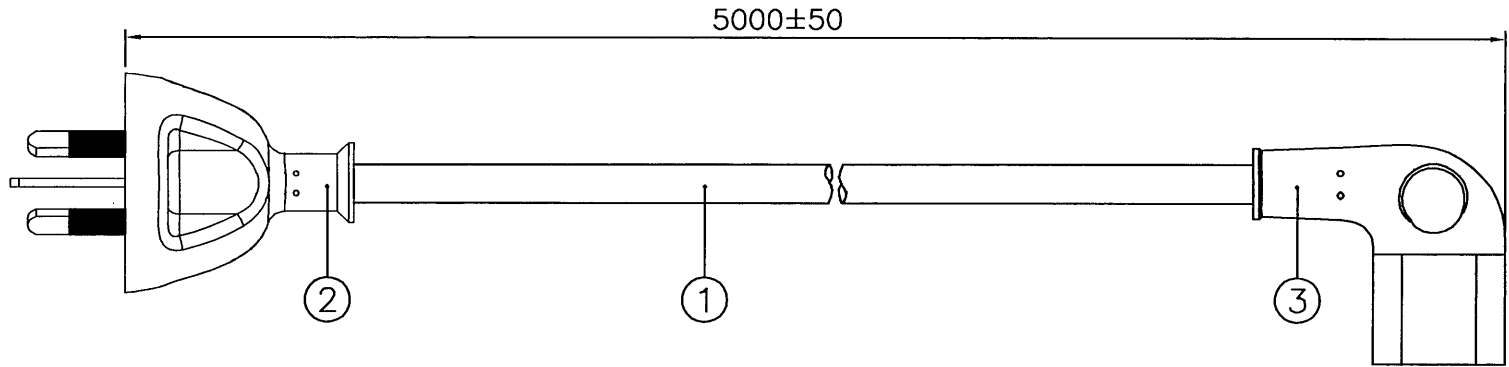
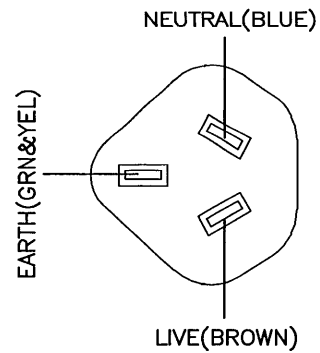
APPROVED BY :	
SIGNATURE :	
APPROVED DATE :	
No. OF PAGES :	



*Volex (Asia) Pte Ltd*

35 Tampines St. 92  
Singapore 528880  
Tel : (65) 6788 7833  
Fax : (65) 6788 7822





6	LABEL RS 45X25MM 1468802	6103440	1
5	BAG LDPE 283X114X0.05 PRT	904028	1
4	8" PE TIE BLK	6310062	1
3	IP60G NL7976B BLK	4100115	-
	MOLDED CONNECTOR VNC13A (10A 250V)	VNC13A-V	1
2	IP60G NL7976B BLK	4100115	-
	MOLDED PLUG VNAU10S3 (10A 250V)	VNAU10S3-V	1
1	CIRCULAR ORDINARY V-75 3X0.75 BLK LF(INDEDENTED)	---	1

S/N	DESCRIPTION	ITEM NUMBER	QTY
-----	-------------	-------------	-----

TITLE : AUSTRALIAN/NEW ZEALAND POWER SUPPLY CORDSET (PB FR) SCALE : N.T.S.

CUSTOMER : VPE/RS COMPONENTS PAGE : 1/1

CUSTOMER PART NUMBER : 1468802(V-NOVUS AUST-C13 5M) ISSUE

Reference Number : 176918 (EVPE09-020-18) 006

SALES :	QA :	ENGRG :	CHECKED BY : CHRIS	DRAWN BY : JIN JU	<b>Voilex (Asia) Pte Ltd</b> <small>Confidential property of Voilex. Information contained herein shall not be disclosed to others, reproduced or used for any other purposes except as authorized in writing by an authorized official of voilex asia.</small>
Date :	Date :	Date :	Date : 17/10/18	Date : 17/09/18	

**APPROVED SOURCE FOR CABLE**

1. TA HSING(SHENZHEN). (HT-2018082501)
2. BAO HING(SHENZHEN). (VOLEX-SAABH-016-W)

**NOTE :**

1. ALL DIMENSIONS IN mm.
2. THE CORD SHALL COMPLY WITH AS/NZS 3191.
3. THE MOLDED PLUG SHALL COMPLY WITH AS/NZS 3112.
4. THE MOLDED CONNECTOR SHALL COMPLY WITH AS/NZS 60320.1.
5. THIS PART CAN BE MANUFACTURED AT ANY LOCATION WHICH HAS SAFETY APPROVAL.

DRAWING NUMBER : REVISION :

L-0644

A

R2.0(4X)

① 45.0

14,6 REF

② 25.0



RED BACKGROUND(PANTONE 172 C) WITH WHITE PRINT, SEE PICTURE BELOW

CUSTOMER P/N  
SEE TABLE

XXXXXXXXX

1

RoHS

WHITE BACKGROUND WITH BLACK PRINT

Made in China



5

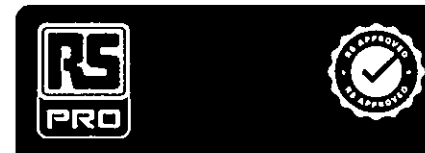
SPECIFICATION :

PRODUCT NO	AW3209 WITH PP COATING
FACESTOCK MATERIAL	ART PAPER
FACESTOCK THICKNESS	72 μM±10%
FACESTOCK COLOUR	WHITE
FACESTOCK SURFACE FINISH	GLOSSY
ADHESIVE BASE	ACRYLIC EMULSION
SHELF LIFE	1 YEAR

BARCODE: CODE 128A, SCAN SHOW CUSTOMER P/N

NOTES :

1. ALL DIMENSION IN MM.
2. GENERAL TOLERANCE ±1MM, UNLESS OTHERWISE SPECIFIED.
3. ① CRITICAL DIMENSIONS, WHERE Y IS IN NUMERICAL DIGITS.
4. WHITE BACKGROUND WITH BLACK PRINT.
5. FONT: ARIAL, BOLD.



PICTURE FOR COLOUR PRINT

DRAWN :	ALICE	REV	IMM/ECR	BY	DATE	REV	IMM/ECR	BY	DATE
RELEASED :	2017/08/03	A	IMM	ALICE	08/08/18				
CHECKED :	<i>[Signature]</i>								
APPROVED :	<i>[Signature]</i>								

TITLE :	RS LABEL 45X25MM								
ITEM NO.:	SEE TABLE	FILENAME :	.\LABEL\PREPRINTED\L-0644	SCALE :	2 : 1	PROJ. :	THIRD ANGLE	PAGE :	1/2

**Voletx (Asia) Pte Ltd**  
 Confidential property of Voletx. Information contained herein shall not be disclosed to others, reproduced or used for any other purposes except as authorized in writing by an authorized official of Voletx Asia.

DRAWING NUMBER : REVISION :

L-0644

A

TABLE

CUSTOMER P/N	ITEM NO.	CUSTOMER P/N	ITEM NO.	CUSTOMER P/N	ITEM NO.	CUSTOMER P/N	ITEM NO.	CUSTOMER P/N	ITEM NO.
1247409	6103431-XXXX	1469118	6103458-XXXX	6266600	6103485-XXXX	9010753	6103512-XXXX	262 1182 0001	6103539-XXXX
1468792	6103432-XXXX	1469119	6103459-XXXX	6266616	6103486-XXXX	9092156	6103513-XXXX	680 3798 0001	6103540-XXXX
1468793	6103433-XXXX	1469120	6103460-XXXX	6266638	6103487-XXXX	9092162	6103514-XXXX	426 373 0001	6103541-XXXX
1468795	6103434-XXXX	1469121	6103461-XXXX	6266672	6103488-XXXX	9092165	6103515-XXXX	426 389 0001	6103542-XXXX
1468796	6103435-XXXX	1469122	6103462-XXXX	6266688	6103489-XXXX	9092168	6103516-XXXX	426 395 0001	6103543-XXXX
1468797	6103436-XXXX	1469123	6103463-XXXX	6266694	6103490-XXXX	9092171	6103517-XXXX	426 402 0001	6103544-XXXX
1468798	6103437-XXXX	1469124	6103464-XXXX	6266701	6103491-XXXX	9092174	6103518-XXXX	426 418 0001	6103545-XXXX
1468799	6103438-XXXX	1469125	6103465-XXXX	6266717	6103492-XXXX	9092178	6103519-XXXX	452 669 0001	6103546-XXXX
1468800	6103439-XXXX	1469126	6103466-XXXX	6266723	6103493-XXXX	9092180	6103520-XXXX	487 277 0001	6103547-XXXX
1468802	6103440-XXXX	1469127	6103467-XXXX	6266745	6103494-XXXX	9092184	6103521-XXXX	487 277 0010	6103548-XXXX
1468803	6103441-XXXX	1469128	6103468-XXXX	7316157	6103495-XXXX	9092187	6103522-XXXX	489 201 0001	6103549-XXXX
1468804	6103442-XXXX	1469130	6103469-XXXX	7316163	6103496-XXXX	9092190	6103523-XXXX	489 217 0001	6103550-XXXX
1469102	6103443-XXXX	305611	6103470-XXXX	7316166	6103497-XXXX	9092193	6103524-XXXX	489 346 0001	6103551-XXXX
1469103	6103444-XXXX	321168	6103471-XXXX	7316175	6103498-XXXX	9092196	6103525-XXXX	489 352 0001	6103552-XXXX
1469104	6103445-XXXX	321174	6103472-XXXX	7316201	6103499-XXXX	9092200	6103526-XXXX	490 217 0001	6103553-XXXX
1469105	6103446-XXXX	321180	6103473-XXXX	7316208	6103500-XXXX	9092203	6103527-XXXX	490 223 0001	6103554-XXXX
1469106	6103447-XXXX	321196	6103474-XXXX	7440925	6103501-XXXX	445 740	6103528-XXXX	490 239 0001	6103555-XXXX
1469107	6103448-XXXX	321203	6103475-XXXX	7440929	6103502-XXXX	449 297	6103529-XXXX	490 245 0001	6103556-XXXX
1469108	6103449-XXXX	321219	6103476-XXXX	7440931	6103503-XXXX	449 326	6103530-XXXX	311-9321-0000	6103557-XXXX
1469109	6103450-XXXX	3238517	6103477-XXXX	7440935	6103504-XXXX	815 846	6103531-XXXX	311-9337-0000	6103558-XXXX
1469110	6103451-XXXX	426424	6103478-XXXX	7440941	6103505-XXXX	268 2610	6103532-XXXX	311-9359-0000	6103559-XXXX
1469111	6103452-XXXX	531100	6103479-XXXX	7440944	6103506-XXXX	311 9315	6103533-XXXX		
1469112	6103453-XXXX	531116	6103480-XXXX	8188903	6103507-XXXX	2000181126	6103534-XXXX		
1469114	6103454-XXXX	6151154	6103481-XXXX	8188909	6103508-XXXX	262 1126 0001	6103535-XXXX		
1469115	6103455-XXXX	6151176	6103482-XXXX	8188912	6103509-XXXX	262 1154 0001	6103536-XXXX		
1469116	6103456-XXXX	6151182	6103483-XXXX	8188915	6103510-XXXX	262 1160 0001	6103537-XXXX		
1469117	6103457-XXXX	6266593	6103484-XXXX	8188919	6103511-XXXX	262 1176 0001	6103538-XXXX		


DRAWN :	ALICE	REV	IMM/ECR	BY	DATE	REV	IMM/ECR	BY	DATE
RELEASED :	2017/08/03	A	IMM	ALICE	08/08/18				
CHECKED :	SIGN	DATE							
APPROVED :	Mace	8/8/18							

TITLE : RS LABEL 45X25MM

ITEM NO.: SEE TABLE

FILENAME : \\LABEL\PREPRINTED\L-0644

SCALE : 2 : 1

PROJ. :  THIRD ANGLE

PAGE : 2/2

**Volet (Asia) Pte Ltd**

Confidential property of Volet.  
Information contained herein shall  
not be disclosed to others,  
reproduced or used for any other  
purpose except as authorized in  
writing by an authorized official of  
Volet Asia.

REV.	DESCRIPTION	DATE
D	UPDATE THE FORMAT.	13/01/05
E	UPDATE VALUES PER PRODUCT SAFETY.	07/04/09
	CHANGE CABLE TYPE ON THE TITLE.	

# 1. PVC INSULATED AND JACKETED FLEXIBLE CORD

## 1.1 SCOPE

This specification shall be in accordance with AS/NZS 3191.

## 1.2 CONSTRUCTION

CONDUCTOR	ANNEALED COPPER WIRE
INSULATION	PVC (BLUE, BROWN AND GREEN&YELLOW)
JACKET	PVC

ITEM	UNIT	SPEC. VALUE
TEMPERATURE RATING	°C	75 $\Delta$
RATED VOLTAGE	V	250/440
NO. OF CORE	NO.	3
CONDUCTOR NOMINAL AREA	mm <sup>2</sup>	0.75
MIN. AVE. THICKNESS OF INSULATION	mm	0.60
MIN. THICKNESS AT ANY POINT OF INSULATION	mm	0.44
MIN. AVE. THICKNESS OF JACKET	mm	0.80
MIN. THICKNESS AT ANY POINT OF JACKET	mm	0.58
OVERALL DIAMETER OF JACKET (REF.)	mm	7.40
VOLTAGE TEST ON COMPLETED CABLE IMMersed IN WATER 20±5°C, 24 hrs	CORE TO CORE ALL CORES CONNECTED TOGETHER AGAINST WATER	- - 3000 V FOR 5 Mins. 3500 V FOR 5 Mins.
VOLTAGE TEST ON INDIVIDUAL CORES IMMERSED IN WATER 20±5°C, 24 hrs	-	1500 V FOR 5 Mins.
CONDUCTOR RESISTANCE TEST (20°C)	$\Omega$ /km	≤26
INSULATION RESISTANCE TEST (20°C)	M $\Omega$ /km	>40
INSULATION RESISTANCE TEST (75°C)	M $\Omega$ /km	V-75 : >0.02

$\Delta$

<b>TITLE : CABLE SPECIFICATION</b> <b>AUSTRALIAN/NEW ZEALAND APPROVED POWER SUPPLY CABLE</b> <b><math>\Delta</math> CIRCULAR ORDINARY 3X0.75mm<sup>2</sup></b>					
SPEC NO. :	APPROVED BY :	CHECKED BY :	DRAWN BY :	REVISION :	<b>Voilex (Asia) Pte Ltd</b> <small>Confidential property of Voilex. Information contained herein shall not be disclosed to others, reproduced or used for any other purposes except as authorized in writing by an authorized official of Voilex Asia.</small>
CS-005SA	<i>honnala</i>	<i>wetor</i>	HONGYAN	E	
	DATE : <i>07/04/09</i>	DATE : <i>7/4/09</i>	DATE : 07/04/09	PAGE : 1/1	

REV.	DESCRIPTION	DATE
A	INITIAL RELEASE.	03/09/18

CABLE MARKING

TA HSING(SHENZHEN)

3X0.75mm<sup>2</sup> CIRCULAR ORDINARY DUTY 250/440V V-75 TA HSING  
INDUSTRIES LTD. LF

DRAWN	WANGHUI	03/09/18	FILENAME :	TITLE : CABLE MARKING (SAA)
CHECK	<i>houqian</i>	03/09/18	CABLE MARKING	
APPR	<i>keith</i>	03/09/18	/TH(SZ)/CIRCULAR	
SCALE	N.T.S.	REV.	ORDINARY 3X0.75 LF	
REFERENCE :				<i>Voilex (Asia) Pte Ltd</i>
CIRCULAR ORDINARY 3X0.75mm <sup>2</sup> LF				
				<small>Confidential property of Voilex. Information contained herein shall not be disclosed to others, reproduced or used for any other purposes except as authorized in writing by an authorized official of voilex asia.</small>

REV.	DESCRIPTION	DATE
A	INITIAL RELEASE.	03/09/18

CABLE MARKING

TA HSING(SHENZHEN)

3X0.75mm<sup>2</sup> CIRCULAR ORDINARY DUTY 250/440V V-75 TA HSING  
INDUSTRIES LTD. LF

DRAWN	WANGHUI	03/09/18	FILENAME :	TITLE : CABLE MARKING (SAA)
CHECK	<i>houqian</i>	03/09/18	CABLE MARKING	
APPR	<i>keith</i>	03/09/18	/TH(SZ)/CIRCULAR	
SCALE	N.T.S.	REV.	ORDINARY 3X0.75 LF	
REFERENCE :				<i>Voilex (Asia) Pte Ltd</i>
CIRCULAR ORDINARY 3X0.75mm <sup>2</sup> LF				
				<small>Confidential property of Voilex. Information contained herein shall not be disclosed to others, reproduced or used for any other purposes except as authorized in writing by an authorized official of voilex asia.</small>



## 2. PLUG

REV	DESCRIPTION	DATE
AA	ADD IN CATALOGUE NO. 'VNAU10S2'.	29/09/17
AB	ADD IN CATALOGUE NO. 'VBAU10S2'.	28/06/18

### 2.1. SCOPE

The plug shall be in accordance with AS/NZS 3112.

### 2.2. CONSTRUCTION

The plug construction shall comply with our catalogue No: AU10SC3, AU10VS3, AU15S3, AU10BS2, AU10VJS3, AU10DS3, AU10DJS3, DS10US3, APAU10S2, APAU10S3, DS10ES2, MFAU10S2, AU10LS2, AU10LS3, AU10LSF2, WA10LS3, AU20LS3, VPAU10LS3, VPAU10LS2, LSAU10THA3, VNAU10S3, VNAU10S2 & **VBAU10S2**.

### 2.3. CHARACTERISTICS

NO.	TEST ITEM	SPECIFICATION REQUIREMENT	ACCEPTANCE CRITERIA
1.	Insulation resistance test	This test is measured with a D.C 500V between live poles, live poles and earth, live poles and surface and for plug with insulated pins, insulated sleeve and live pins.	Min. 5 M Ohm
2.	High Voltage test	A voltage of 1000V a.c. is applied for 1 min between poles and between live and earth poles. Voltage of 3500V a.c. is applied for 1 min between live poles and surface. For plug with insulated pins, a voltage of 1250V a.c. is applied for 1 min between sleeves and live pins	There shall not be any break down in voltage or flash over.
3.	Flexible cord anchorage test	The cord is subjected to a pull force of 110N. The force is applied over an interval of 10sec., and then maintained for further 10sec., and release. It is performed 3 times. (70N is used for 0.5mm <sup>2</sup> conductor)	No damage to the strain relief and the connection of conductor to the pins must be intact.
4.	Tumbling test	The samples are drop from a height of 50cm onto a steel plate(3mm thick) for a total of 1000 times. The pins are inspected and straightened every 100 times.	No damage. Bending of pins is ignored
5.	Temperature rise test	An alternating current of 1.1 times of the rated current of the plug is passed through the plug from a socket for 1 hour.	The rise in temperature of the terminals shall not exceed 45 K.
6.	Secureness of pins (movement of pins)	The plug is conditioned at a temperature of 40±1°C for 1 hour. A force of 18±1N is then applied perpendicular to the pins in 2 directions in succession for 10 sec. The test is conducted at 40±1°C.	The maximum deflection of the pins shall not exceed 2.0mm after 5 min.

DRAWN:	LILY ZHOU	28/06/18
CHECK:	<i>hongyan</i>	28/06/18
APPR:	<i>hoith</i>	28/06/18
REV:	AB	

REFERENCE:

TITLE :  
AUSTRALIAN/NEW ZEALAND  
PLUG

***Volex (Asia) Pte Ltd***

Confidential property of Volex.  
Information contained herein shall not be disclosed to others, reproduced or used for any other purposes except as authorized in writing by an authorized official of volex asia.

NO.	TEST ITEM	SPECIFICATION REQUIREMENT	ACCEPTANCE CRITERIA
7.	Secureness of pins (fixing of pins)	The plug is conditioned at a temperature of 50±2°C for 1 hour. The test is then carried out at 50±2°C where 60±0.6N force is applied inwards (pushing) the pins for 10 min. It is then subjected to a pull of 60±0.6N force from the pin for 10 min.	The pins shall not be displaced (either inward or outward) by more than 2.4mm or the pins shall return to within 0.8mm of its nominal length within 5 min.
8.	Attachment of insulated cores	The jacket of the cord is removed all the way back to the plug exposing the inner core. A pull of 110±1N is applied between the pins and the inner cores for 10sec., and then released.	The inner core must remain or no conductor strands part from the pins.
9.	Attachment of sheathing	The jacket of the cord is slitted approx. 25mm from the cord entry with all conductors and cores severed. A force of 130±1.3N is applied between the pins and free end of the jacket for 10sec., and then released.	The insulated cores shall not be exposed at the cord entry of cord guard.
10.	Attachment of conductors	Unmoulded samples are tested. A pull of 85±0.9N is applied between the pin and the attached conductor for 1 min.	No conductor strands shall be completely parted from the pin.
11	Attachment of flexible cord (Bending test)	The sample shall be loaded with a weight of 10N for 0.75mm <sup>2</sup> or 20N for 1.00mm <sup>2</sup> and bigger and the oscillating member shall be moved backward and forward through an angle of 90° (45° on either side of the vertical) the number of flexing being 10,000 and the rate of flexing 60 per min.	The sample shall show no damage. Insulation of the flexible cord shall not have been damaged and not more than 10% of the number of strands of each conductor shall have broken.
12	Glow wire test	The tip of the glow wire heated electrically to 750°C shall be applied at the portion between the current-carrying pins for a period of 30s.	Any flame and glowing shall extinguish within 30s after the removal of the glow-wire. There shall be no ignition of the tissue paper or scorching of the board.

DRAWN:	LILY ZHOU	28/06/18	TITLE : AUSTRALIAN/NEW ZEALAND PLUG
CHECK:	<i>hongyan</i>	28/06/18	
APPR:	<i>hoith</i>	28/06/18	
REV:	AB		
REFERENCE:			<b><i>Volex (Asia) Pte Ltd</i></b>
			<small>Confidential property of Volex. Information contained herein shall not be disclosed to others, reproduced or used for any other purposes except as authorized in writing by an authorized official of volex asia.</small>

NO.	TEST ITEM	SPECIFICATION REQUIREMENT	ACCEPTANCE CRITERIA
13	Pressure test at high temperature on insulated pins (For plug with insulating pins only)	A blade with a force of 2.5N is applied on the sleeve of the pins for 2 hours in a temperature of 160±5°C. The sample is then cooled in cold water to bring it to room temperature within 10s.	The thickness of the sleeve at the point of impression shall not have been reduced by more than 50%.
14	Static damp heat test (For plug with insulating pins only)	The plug is subjected to two damp heat cycles in accordance with IEC 60068-2-30 as specified; Db (12 + 12h cycle), 95% relative humidity, lower temp. 25 ± 3°C and upper temp. 40°C. After this treatment and after recovery to room temp., the plug shall be subjected to; (a) Insulation resistance test (b) High voltage test (c) Abrasion test	(a) Min. 5 Mohm. (b) No breakdown in voltage or flash over. (c) No damage to the sleeve.
15	Low temperature test (For plug with insulating pins only)	The plug is maintained at -15±2°C for at least 24 hours and then returned to room temperature.	The sample shall pass the test of insulation resistance (item 1), high voltage test (item 2) and abrasion test (item 17)
16	Impact test at low temperature (For plug with insulating pins only)	A mass of 100±1g shall be made to fall at a height of 100mm on the sleeve at a temperature of -15±2°C. The whole set-up shall have been maintained at the testing temperature for at least 24 hours prior to the test. 4 impacts shall be made on different parts of the sleeves. The plug is then allowed to come back to room temperature.	No crack on the material shall occur.
17	Abrasion test (For plug with insulating pins only)	The pin of sample slopes downwards at angle of 10° to the horizontal. The sample is loaded with a force of 4N on the pin. The number of movement is 20,000 and the length of pin subjected to abrasion is approx. 7mm over the insulating collar.	No damage to the sleeve.
18	Pin Bending Test (For plug with insulating pins only)	The live and neutral pins are tested individually in which the pins are forced towards the centroid of the plug and then back to the starting point. The force is applied perpendicular to the pin and at a distance of 14+/-0.5mm from the face of the plug. The distance of travel from the start to the end shall be 7.5mm. The speed of deflection shall be a max of 50mm/s. The pins shall be for 20 complete cycles.	The pins shall not be broken off.

DRAWN:	LILY ZHOU	28/06/18	TITLE : AUSTRALIAN/NEW ZEALAND PLUG
CHECK:	<i>houqyan</i>	28/06/18	
APPR:	<i>heith</i>	28/06/18	
REV:	AB		
REFERENCE:			<b><i>Volox (Asia) Pte Ltd</i></b>
			<small>Confidential property of Volox. Information contained herein shall not be disclosed to others, reproduced or used for any other purposes except as authorized in writing by an authorized official of volox asia.</small>

### 3. CONNECTOR

REV	DESCRIPTION	DATE
AO	ADD IN CATALOGUE NO. VNC5S.	30/05/18
AP	ADD IN CATALOGUE NO. VNC21S.	6/6/2018

#### 3.1. SCOPE

The connector shall be in accordance with Australian Standard AS/NZS 60320.1, approval and test specification - appliance couplers

#### 3.2. CONSTRUCTION

The connector construction shall comply with our catalogue No: V1625, V1625A, VAC17S, VAC19, VSCC13, APC13, APC13S, VSC19, VAC19A, VAC5S, APC5M, APC5S, APC5A, APC5SM, DLC5A3, VSCC15, PIC17S, APC13F, APC13G, VAC5AR, VAC13A, VAC13S, V1625BS, V1625LA, VAC13KS, SOC5S, VAC19KS, DLC5U3, DLC5E3, V1625AT, APC5SF, APC13H, VCC13, VAC17A, VCC5S, VAC19H, V1625H, APC13FH, APC13HC, VAC19LA, VNC13A, VAC17KS, VNC5S & VNC21S.

"ALL Connectors complying to Standard Sheet C5, C13, C15, C15A, C17, C19 & C21"

#### 3.3. CHARACTERISTICS

NO.	TEST ITEM	DESCRIPTION	ACCEPTANCE CRITERIA
1.	Moisture resistance test	Samples are kept in a humidity cabinet containing air with a relative humidity between 91 to 95% and a temperature of 20°C-30°C for a duration of 48 hours.	No damage
2.	Electric strength test	Voltages of 4000V±60V and 2000V±60V, with min. trip current of 100mA is applied for 60s±5s between current-carrying contact and body and between each contacts respectively after the moisture resistance tests.	No flashover and breakdown
3.	Insulation resistance test	This test is measured with a D.C 500V after the moisture resistance test. Readings are taken after 60s ± 5s of application of voltage.	Min. 5 M Ohm
4.	Withdrawal force test	<p>i) Min. 1.5N (2N for 16A) - A single pin made to the minimum dimension is inserted into the connector. The pin, together with the weight should exert a force of 1.5N (2N for 16A connector). Each individual pole of the connector is tested separately.</p> <p>ii) Max. 50N (60N for 16A) - Insert and withdraw the connector from a socket having pin dimension to the maximum and shroud dimension to the minimum for 10 times. The connector is then inserted again into the socket hang with a total weight of 50N(60N for 16A). The weight consist of a principal weight which is 90% of the total weight and a supplementary weight of 10%.</p> <p>The test is repeated for hot connector with temperature of 120°C±2°C on the pins.</p>	<p>i) The pin with the weight should not be withdrawn from the connector for more than 3 seconds.</p> <p>ii) The connector shall be withdrawn from the socket. If not the supplementary weight is lifted from a height of 5cm and drop. The connector must be withdrawn.</p> <p>The test is repeated after temperature rise test.</p>

DRAWN:	LILY ZHOU	6/6/2018	TITLE : AUSTRALIAN/NEW ZEALAND CONNECTOR
CHECK:	<i>houqyan</i>	07/06/18	
APPR:	<i>heith</i>	07/06/18	
REV:	AP		
REFERENCE:			<b><i>Volex (Asia) Pte Ltd</i></b>
			<small>Confidential property of Volex. Information contained herein shall not be disclosed to others, reproduced or used for any other purposes except as authorized in writing by an authorized official of volex asia.</small>

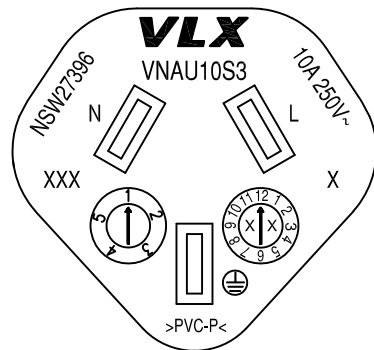
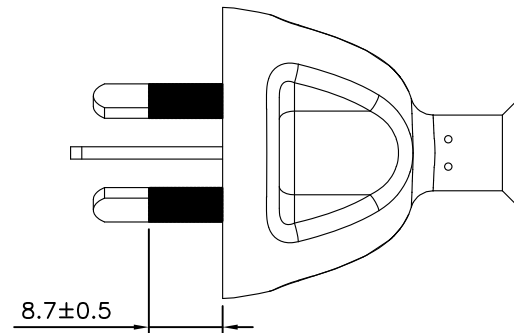
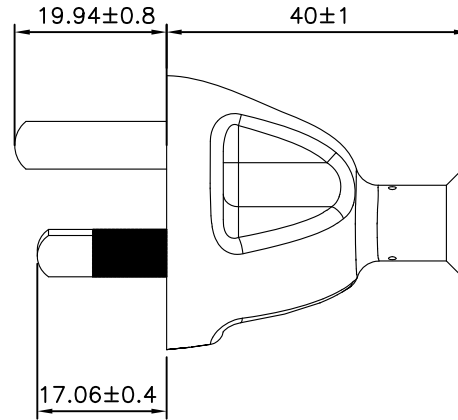
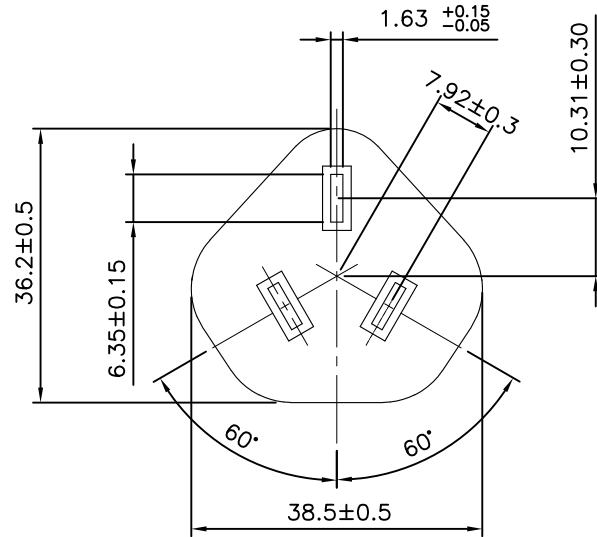
NO.	TEST ITEM	DESCRIPTION	ACCEPTANCE CRITERIA
5.	Glow wire test	Glow wire is applied for 30s - 750°C on inserts and housing retaining contacts - 650°C on elsewhere.	Flame (if any) shall be self-extinguished within 30s upon the removal of the glow wire and molten droplets shall not ignite paper.
6.	Bending test	The sample shall be loaded with a weight of 10N for 0.75mm <sup>2</sup> or 20N for 1.00mm <sup>2</sup> or bigger and the oscillating member shall be moved backward and forward through an angle of 90°(45° on either side of the vertical) the number of flexing being 20,000.A rated current is applied. For round cord, the sample is turned 90 degree around the axis of cable after 10,000 cycles. The flexing is further completed in this axis. Flat cable is flexed only along the bigger axis of the cable.	There shall be no complete breakage of any of the conductors. Broken conductor shall not have pierced the insulation.
7.	Tumbling test	The sample is dropped from a height of 50cm onto a steel plate(3mm thick) for a total of 500 times.	No damage to impair further use of connector.
8.	Breaking Capacity test	The connector is connected and disconnected 50 times (100 strokes) with the inlet at a rate of 30 strokes per minute with 275V and 1.25 times of rated current.	No flashover or sustained arcing during the test and no damage to impair further use of connector.
9.	Normal operation test	Test is similar to breaking capacity except that the test voltage is 250V with the connector connected and disconnected with the inlet for 1000 times (2000 strokes) with rated current and 3000 times (6000 strokes) without current.	Withstand electric strength at 1500V for 1 min, and show no damage
10.	Temperature rise test	An alternating current at 1.25 times rated current is passed through the current carrying contacts for 1 hour.This is repeated for connector with earth contact passing current between earth and each of the current carrying contacts.	The temperature rise shall not exceed 45K.
11.	Cord-anchorage test	The cord is subjected to pulls of 50N(2.5A) or 60N(others) for 100 times each time for 1 sec. without jerk.Thereafter the cord is subjected for 1 min. to a torque of 0.15Nm(0.75mm <sup>2</sup> ) or 0.25Nm(others).	The cord shall not be damaged and shall not been displaced by more than 2mm.

DRAWN:	LILY ZHOU	6/6/2018	TITLE : AUSTRALIAN/NEW ZEALAND CONNECTOR
CHECK:	<i>hongyan</i>	07/06/18	
APPR:	<i>heith</i>	07/06/18	
REV:	AP		
REFERENCE:			<b><i>Volex (Asia) Pte Ltd</i></b>
			<small>Confidential property of Volex. Information contained herein shall not be disclosed to others, reproduced or used for any other purposes except as authorized in writing by an authorized official of volex asia.</small>

NO.	TEST ITEM	DESCRIPTION	ACCEPTANCE CRITERIA
12.	Heat deformation test	Samples are kept for 1 hour in a heating cabinet at temperature of 100±2°C.	No damage to impair further use of connector.
13.	Heat pressure test	A pressure of 20N is applied at a temperature of 100°C ± 2°C for 1 hour.	No damage to impair further use of connector.
14.	Aging test	The samples are kept for 168 hours in a heating cabinet at a temperature of 80±2°C.	No damage & marking shall be legible.
15.	Ball pressure test	A ball of 5mm in diameter is applied on the connector with the following temperature with 20N force for 1 hour. i) 125°C for hot connectors. ii) 125°C for parts retaining current carrying parts and earth circuit. iii) 75°C for other parts for cold connector. The connector is then cooled down to room temperature with cold water.	The diameter of the impression shall not exceed 2mm.

DRAWN:	LILY ZHOU	6/6/2018	TITLE : AUSTRALIAN/NEW ZEALAND CONNECTOR
CHECK:	<i>hongyan</i>	07/06/18	
APPR:	<i>heith</i>	07/06/18	
REV:	AP		
REFERENCE:			<b><i>Volex (Asia) Pte Ltd</i></b>
			<small>Confidential property of Volex. Information contained herein shall not be disclosed to others, reproduced or used for any other purposes except as authorized in writing by an authorized official of volex asia.</small>

REV.	DESCRIPTION	DATE
A	INITIAL RELEASE.	30/05/18



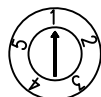
**MARKING DETAILS :**

**NOTES :**

- 1.) ALL DIMENSIONS IN mm.
- 2.) X - CAVITY NO.(OPTIONAL)
- 3.) XXX - MANUFACTURING LOCATION.
- 4.) YEAR & MONTH & WEEK CODE INSERT :



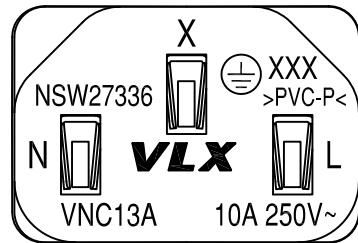
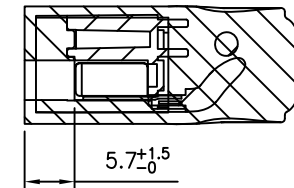
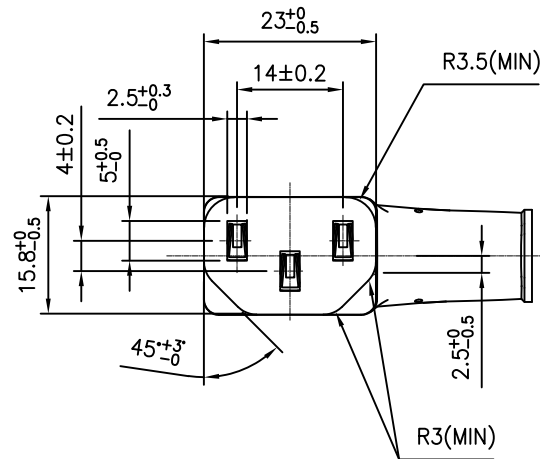
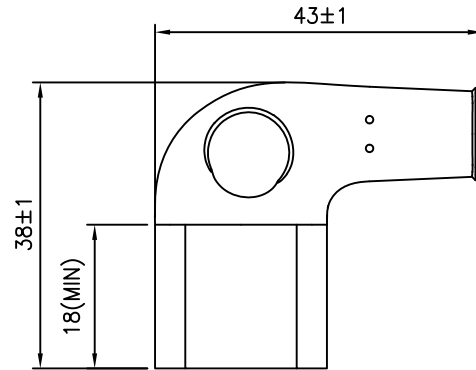
YEAR X X  
2018 = 1 8  
2019 = 1 9



1 ~ 5 - week of the month

HG	HENG GANG (CHINA)		DRAWN	LI XIA	30/05/18	FILE NAME : A-PLUG/SAA /GENERAL/ VNAU10S3-YMW-SAA	TITLE : MOLDED PLUG VNAU10S3 (YEAR, MONTH & WEEK CODE)
SM1	ZHONGSHAN (CHINA)	X	CHECK	Feng	30/05/18		
VH	HANOI (VIETNAM)		APPR	Keith	30/05/18		
			REV.	A	SCALE		
B	BATAM (INDONESIA)		REFERENCE :				<b>Volex (Asia) Pte Ltd</b>  <small>Confidential property of Volex. Information contained herein shall not be disclosed to others, reproduced or used for any other purposes except as authorized in writing by an authorized official of volex asia.</small>
VC	CHENNAI (INDIA)		AUSTRALIAN & NEW ZEALAND APPROVAL				
MANUFACTURE LOCATION MARK ( ' X ' IS APPLICABLE ONLY)							

REV.	DESCRIPTION	DATE
A	INITIAL RELEASE.	20/09/17



**MARKING DETAILS**

**NOTES :**

- 1.) ALL DIMENSIONS IN mm.
- 2.) X - CAVITY NO. (OPTIONAL)
- 3.) XXX - MANUFACTURING LOCATION.

HG	HENG GANG (CHINA)		DRAWN	TIAN SHUO	20/09/17	FILE NAME :	TITLE : <b>MOLDED CONNECTOR</b>  <b>VNC13A</b>	
SM1/SMI	ZHONGSHAN (CHINA)	X	CHECK	Feng	20/09/17	A-CONN/SAA/ GENERAL/ VNC13A-SAA		
VH	HANOI (VIETNAM)		APPR	Keith	20/09/17			
B	BATAM (INDONESIA)		REV.	A	SCALE	N.T.S.		
VC	CHENNAI (INDIA)		REFERENCE :				<b><i>Volex (Asia) Pte Ltd</i></b>  <small>Confidential property of Volex. Information contained herein shall not be disclosed to others, reproduced or used for any other purposes except as authorized in writing by an authorized official of volex asia.</small>	
MANUFACTURE LOCATION MARK ( ' X ' IS APPLICABLE ONLY)			AUSTRALIAN/NEW ZEALAND <b>APPROVAL</b>					