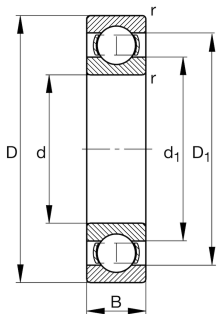


**FAG****6306-N**

Deep groove ball bearing

Deep groove ball bearing 63...-N, single row,
ring groove, steel sheet metal cage

Technical information



Your current product variant

Sealing	Without	Not sealed
Design, bearing outer ring	N	Ring groove for snap ring
Cage	JN	Steel sheet metal
Tolerance class	PN	Normal (PN)
Dimensional / heat stabilization	SN	Rings dimensional stabilized up to 120°
Lubricant	Without	Bearing not greased
Radial internal clearance	CN (Group N)	Normal internal clearance
Bore type	Z	Cylindrical

Main Dimensions & Performance Data

d	30 mm	Bore diameter
D	72 mm	Outside diameter
B	19 mm	Width
C _r	30,500 N	Basic dynamic load rating, radial
C _{0r}	16,200 N	Basic static load rating, radial
C _{ur}	1,050 N	Fatigue load limit, radial
n _G	13,700 1/min	Limiting speed
n _{gr}	10,500 1/min	Reference speed
m	0.349 kg	Weight



Mounting dimensions

$d_{a\ min}$	37 mm	Minimum diameter shaft shoulder
$D_{a\ max}$	65 mm	Maximum diameter of housing shoulder
$r_{a\ max}$	1 mm	Maximum fillet radius

Dimensions

r_{\min}	1.1 mm	Minimum chamfer dimension
D_1	59.62 mm	Shoulder diameter outer ring
D_2	61.58 mm	Caliber diameter outer ring
d_1	44.6 mm	Shoulder diameter inner ring


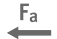




Temperature range

T_{\min}	-30 °C	Operating temperature min.
T_{\max}	120 °C	Operating temperature max.

Calculation factors

f_0	13	Calculation factor
-------	----	--------------------

Characteristics

	Radial load
	Axial load in one direction
	Axial load in two directions
	Grease Lubrication
	Oil Lubrication
	Not sealed