

# Printed-circuit board connector - MC 1,5/ 9-G-3,5 P20 THR - 1788864

Please be informed that the data shown in this PDF Document is generated from our Online Catalog. Please find the complete data in the user's documentation. Our General Terms of Use for Downloads are valid (<http://phoenixcontact.com/download>)

Header, Nominal current: 8 A, Rated voltage (III/2): 160 V, Number of positions: 9, Pitch: 3.5 mm, Color: black, Contact surface: Tin, Mounting: SMD/THT/THR



## Key commercial data

Packing unit	1
GTIN	 4 046356 612043
Custom tariff number	85366990

## Technical data

### Dimensions

Length	9.2 mm
Pitch	3.5 mm
Dimension a	28 mm
Pin dimensions	0,8 x 0,8 mm
Hole diameter	1.4 mm

### General

Range of articles	MC 1,5/...G-THR
Insulating material group	IIIa
Rated surge voltage (III/3)	2.5 kV
Rated surge voltage (III/2)	2.5 kV
Rated surge voltage (II/2)	2.5 kV
Rated voltage (III/3)	160 V
Rated voltage (III/2)	160 V
Rated voltage (II/2)	250 V
Connection in acc. with standard	EN-VDE
Nominal current I <sub>N</sub>	8 A
Maximum load current	8 A
Insulating material	LCP

# Printed-circuit board connector - MC 1,5/ 9-G-3,5 P20 THR - 1788864

## Technical data

### General

Inflammability class according to UL 94	V0
Color	black
Number of positions	9

## Classifications

### eCl@ss

eCl@ss 4.0	272607xx
eCl@ss 4.1	27260701
eCl@ss 5.0	27260701
eCl@ss 5.1	27260701
eCl@ss 6.0	27260704
eCl@ss 7.0	27440402
eCl@ss 8.0	27440402

### ETIM

ETIM 4.0	EC002637
ETIM 5.0	EC002637

### UNSPSC

UNSPSC 6.01	30211810
UNSPSC 7.0901	39121409
UNSPSC 11	39121409
UNSPSC 12.01	39121409
UNSPSC 13.2	39121409

## Approvals

### Approvals

---

#### Approvals

UL Recognized / cUL Recognized / VDE Gutachten mit Fertigungsüberwachung / EAC / cULus Recognized

---

#### Ex Approvals

---

#### Approvals submitted

---

#### Approval details

# Printed-circuit board connector - MC 1,5/ 9-G-3,5 P20 THR - 1788864

## Approvals

UL Recognized

	B	D
Nominal current $I_N$	8 A	8 A
Nominal voltage $U_N$	300 V	300 V

cUL Recognized

	B	D
Nominal current $I_N$	8 A	8 A
Nominal voltage $U_N$	300 V	300 V

VDE Gutachten mit Fertigungsüberwachung

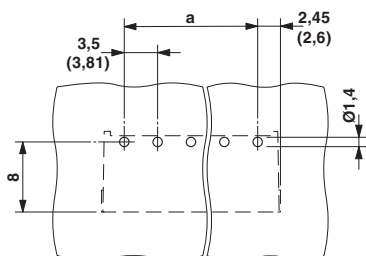
Nominal current $I_N$	8 A
Nominal voltage $U_N$	160 V

EAC

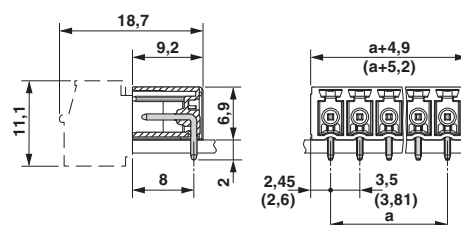
cULus Recognized

## Drawings

Drilling diagram

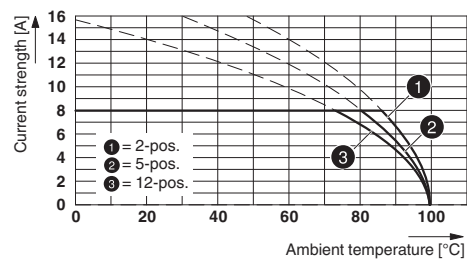


Dimensioned drawing



## Printed-circuit board connector - MC 1,5/ 9-G-3,5 P20 THR - 1788864

Diagram



Type: MC 1,5/...-ST(F)-3,5 with MC 1,5/...-G(F)-3,5 P.. THR