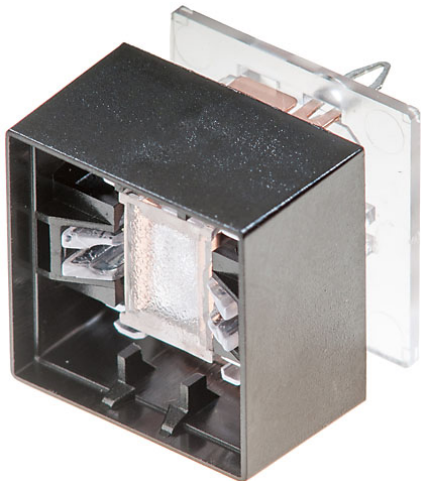


EAO – Your Expert Partner for Human Machine Interfaces

95-414.000 - Switching element

95-414.000 - Switching element



Attention: The preview is based on a sample product. This can differ from your current configuration.

Front

Front shape square
Front dimension 19 mm x 19 mm

Other Attributes

Weight 0,003 kg

Operating-/Indication part

Lens illumination illuminative

IP-Rating

Front protection IP40

Connection Method

Terminal PCB

Actuator

Switching action Momentary

Switching element

Switching system Slow-make switching element
Contacts 1 NO
Switching voltage 48 V DC
Switching current 0.05 A
Contact material

