

Wireless Module MC75

EDGE up your business

EDGE, the fastest transmission standard currently in use in GSM networks, is creating brand new opportunities for computing applications. The MC75 from Siemens enables you to make use of this speed in your own products, facilitating multimedia downloads and data streaming, for example.

EDGE, which stands for "Enhanced Data rates for GSM Evolution" is both a supplement and an alternative to UMTS. By employing this standard, your products will be able to transmit data at very high speed, even in regions where UMTS is not available. In addition, due to the Quad-Band technology, the module can be used in every GSM network worldwide. The MC75 includes an RIL driver, which makes it particularly attractive for Microsoft © Windows Mobile™ based devices like smartphones and PDAs. The integrated USB port also allows the use of the MC75 in applications like GSM/GPRS modems.

The MC75 allows mobile e-mail and internet access. Even multimedia streaming is possible. This degree of flexibility unleashes a host of completely new possibilities for notebooks, PDAs, and other computing applications!

And in order to get your product to the market quickly and easily – the MC75 comes with full type approval (FTA). It has also been approved by major network carriers around the world, including US operators.



QUAD-BAND



EDGE CLASS 10



GPRS CLASS 12



RIL DRIVER



TCP/IP CONNECTIVITY



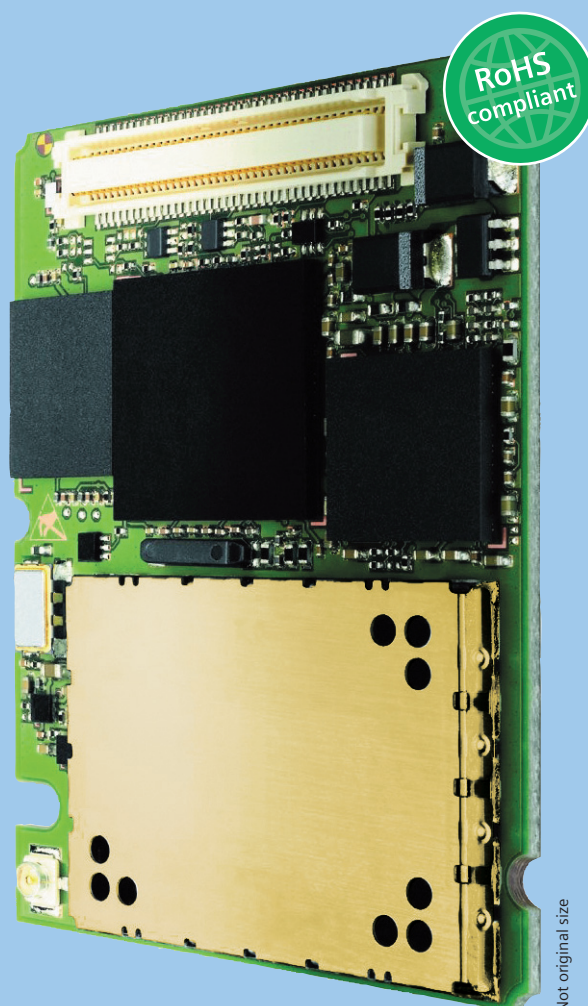
USB



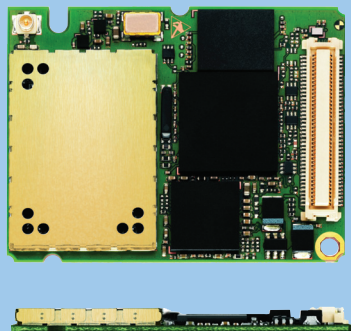
SIM ACCESS PROFILE



FAX FUNCTIONALITY



Not original size



Original size

Wireless Module MC75

EDGE up your business

General features:

- Quad-Band GSM 850/900/1800/1900 MHz
- EDGE (E-GPRS) multi-slot class 10
- GPRS multi-slot class 12
- GSM release 99
- Output power:
 - Class 4 (2 W) for EGSM850
 - Class 4 (2 W) for EGSM900
 - Class 1 (1 W) for GSM1800
 - Class 1 (1 W) for GSM1900
- Control via AT commands (Hayes 3GPP TS 27.007 and 27.005)
- SIM Application Toolkit (release 99)
- TCP/IP stack access via AT commands
- Internet Services: TCP, UDP, HTTP, FTP, SMTP, POP3
- Supply voltage range: 3.2 ... 4.3 V
- Temperature range
 - Normal Operation: -30°C to +70°C
 - Restricted Operation: -30°C to +75°C
 - Switch off: +80°C
 - Storage: -40°C to +85°C
- Dimensions: 34 x 45 x 3.5 mm
- Weight: 7.5 g

Specification for EDGE data transmission:

- EDGE class 10: max 236.8 kbps (downlink)
- Mobile station class B
- Modulation and coding scheme MCS 1-9

Specification for GPRS data transmission:

- GPRS class 12
- Mobile station class B
- PBCCH support
- Coding schemes CS 1-4

Specification for CSD data transmission:

- Up to 14.4 kbps
- V.110
- Non-transparent mode
- USSD support

Specification for SMS:

- Point-to-point MO and MT
- SMS cell broadcast
- Text and PDU mode

Specification for fax:

- Group 3, class 1

Specification for voice:

- Triple-rate codec for HR, FR, and EFR
- Adaptive multi-rate AMR
- Basic hands-free operation
- Echo cancellation
- Noise reduction

Special features:

- RIL software for Microsoft® Windows Mobile™ 5.0 based devices
- Multiplexer driver for Microsoft® Windows
- SIM Access Profile integrated

Interfaces:

- Hirose U.FL-R-SMT 50 ohm antenna connector
- Antenna solder pad
- Molex 80-pin board-to-board connector
 - Power supply
 - Audio: 2x analog, 1x digital
 - 2 x serial interface (ITU-T V.24 protocol)
 - USB 2.0 full speed
 - SIM card interface 3 V, 1.8 V
 - I²C bus

Approvals:

- R&TTE, FCC, UL, IC, GCF, PTCRB, CE
- Local approvals and network operator certifications

More about Siemens Wireless Modules at: www.siemens.com/wm

Global thinking, local understanding.



U.K. ← Football → USA

Here, there and everywhere

Global but local - Siemens lives up to this motto! Not only are we present locally but we are also able to open up amazing global business perspectives for you! Find the details of your local Siemens contact partner here: www.siemens.com/wm-contact

Technical Support

Our application engineers support you from the design-in phase over the integration of the module into the application to the certification process.

We protect your business

Profit from our strong Intellectual Property Rights position (IPR) – guarded by our legal professionalism you secure the fruits of your business effort.

Our technology portfolio covers · +++ Java™ Open Platform +++ EDGE +++ GPS +++