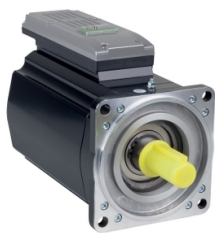


Product datasheet

Specifications



integrated servo motor- 12.5 Nm-
2000 rpm- keyed shaft- multiturn-
without brake

ILM1402P12A0000

⚠ Discontinued on: 9 Feb 2023

⚠ Discontinued

EAN Code: 3606485294933

Main

Range of product	PacDrive 3
Product or component type	Servo motor integrated drive
Device short name	ILM

Complementary

[Us] rated supply voltage	250...700 V
Continuous stall current	4.8 A
Continuous stall torque	12.5 N.m
Peak stall torque	55 N.m
Nominal output power	1910 W
nominal torque	9.1 N.m
Nominal speed	2000 rpm
Maximum current Irms	24 A
[In] rated current	3.7 A
Shaft end	Keyed
Second shaft	Without second shaft end
Shaft diameter	24 mm
Shaft length	50 mm
key width	40 mm
Feedback type	Absolute multiturn SinCos Hiperface
Speed feedback resolution	128 periods
Holding brake	Without
Mounting support	International standard flange
Motor flange size	140 mm
Torque constant	2.6 N.m/A at 120 °C
Back emf constant	173 V/krpm at 20 °C
Number of motor poles	10
Rotor inertia	12.68 kg.cm²
Stator resistance	1.9 Ohm at 20 °C for Ph/Ph 1.32 Ohm at 120 °C for Ph/N

Disclaimer: This documentation is not intended as a substitute for and is not to be used for determining suitability or reliability of these products for specific user applications

Stator inductance	22 mH at 20 °C for Ph/Ph 11 mH at 120 °C for Ph/N
Maximum radial force Fr	2430 N at 1000 rpm 1930 N at 2000 rpm
Maximum axial force Fa	0.2 x Fr
type of cooling	Natural convection
Length	309 mm
Number of motor stacks	2
Centring collar diameter	130 mm
centring collar depth	3.5 mm
Number of mounting holes	4
Mounting holes diameter	11 mm
Circle diameter of the mounting holes	165 mm
Net weight	17.2 kg

Environment

IP degree of protection	IP54
-------------------------	------

Packing Units

Unit Type of Package 1	PCE
Number of Units in Package 1	1
Package 1 Height	26.0 cm
Package 1 Width	20.0 cm
Package 1 Length	59.0 cm
Package 1 Weight	23.13 kg

Contractual warranty

Warranty	18 months
----------	-----------



Environmental Data

Schneider Electric aims to achieve Net Zero status by 2050 through supply chain partnerships, lower impact materials, and circularity via our ongoing “Use Better, Use Longer, Use Again” campaign to extend product lifetimes and recyclability.

[Environmental Data explained >](#)

[How we assess product sustainability >](#)

Environmental footprint	
Carbon footprint (kg.eq.CO2 per CR, Total Life cycle)	1
Environmental Disclosure	Product Environmental Profile

Use Better

Materials and Substances	
Packaging made with recycled cardboard	Yes
Packaging without single use plastic	No
EU RoHS Directive	Pro-active compliance (Product out of EU RoHS legal scope)
REACH Regulation	REACH Declaration
PVC free	Yes

Use Again

Repack and remanufacture	
Circularity Profile	End of Life Information
Take-back	No