

Product Information



SYNTECH

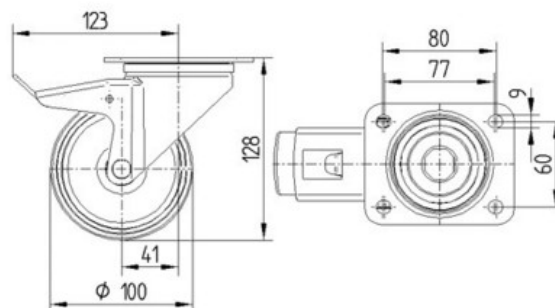
3477HUR100P62 white

EAN 4031582400656

Swivel castor with total lock, tail end of castor, housing made of pressed steel, bright zinc plated, blue passivated, double ball bearing swivel head, wheel axle with nut, dustguard, plate fitting. Hybrid-wheel "SYNTECH", wheel centre and tread made of Polyamide, with elastic solid rubber centre, noise reduced, roller bearing

Technical Data

Wheel diameter	100 mm
Width of Tread	36 mm
Size of Plate	105 x 85 mm
Plate hole centres	80/77 x 60 mm
Plate hole	9 mm
Offset	41 mm
Swivel Interference	182 mm
Overall height	128 mm
Temperature	- 20 / + 60 °C
Standard	EN 12532
Weight	1.178 kg
Swivel Radius	91 mm
Hardness of tread	D 75 Shore
Load capacity	160 kg
Load capacity (static)	320 kg



Roll performance	+	+	+	+	+
Movement noise	+	+	+	+	+
Attrition	+	+	+	+	+
Corrosion resistance	+	+	+	+	+

SYNTECH

3477HUR100P62 white

EAN 4031582400656

