

# ME-IO 18,8 DEV-KIT KMGY - Housing set



2202527

<https://www.phoenixcontact.com/in/products/2202527>

Please be informed that the data shown in this PDF document is generated from our online catalog. Please find the complete data in the user documentation. Our general terms of use for downloads are valid.



DEV-KIT ME-IO: contains 1 x ME-IO 18,8 housing and pluggable connection technology (HSCH with HSCP), supplied in individual parts

## Your advantages

- Easy, tool-free mounting
- Optional DIN rail connector for easy module-to-module communication
- Lock and Release principle for automatic latching and intuitive release of the front connection plug
- Plastic in accordance with UL94 V0: for more rigorous flammability requirements
- Plug-in front connection technology

## Commercial data

Item number	2202527
Packing unit	1 pc
Minimum order quantity	1 pc
Sales key	ACH
Product key	ACHEBD
GTIN	4055626141770
Weight per piece (including packing)	91 g
Weight per piece (excluding packing)	89 g
Customs tariff number	85366990
Country of origin	DE

# ME-IO 18,8 DEV-KIT KMGY - Housing set



2202527

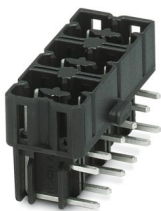
<https://www.phoenixcontact.com/in/products/2202527>

## Set consists of

### HSCH 2,5-3U/12 9005 - PCB header

2201788

<https://www.phoenixcontact.com/in/products/2201788>



PCB headers, nominal cross section: 2.5 mm<sup>2</sup>, color: black, nominal current: 8 A, rated voltage (III/2): 320 V, contact surface: Sn, contact connection type: Pin, number of potentials: 12, number of rows: 2, number of positions: 12, number of connections: 12, product range: HSCH 2,5/...-G, pitch: 5 mm, mounting: Wave soldering, pin layout: Linear pinning, solder pin [P]: 3.8 mm, number of solder pins per potential: 1, plug-in system: HSC 2,5, Pin connector pattern alignment: Standard, locking: without, mounting method: without, type of packaging: packed in cardboard

---

### HSCH 2,5-2U/ 8 9005 - PCB header

2201789

<https://www.phoenixcontact.com/in/products/2201789>



PCB headers, nominal cross section: 2.5 mm<sup>2</sup>, color: black, nominal current: 8 A, rated voltage (III/2): 320 V, contact surface: Sn, contact connection type: Pin, number of potentials: 8, number of rows: 2, number of positions: 8, number of connections: 8, product range: HSCH 2,5/...-G, pitch: 5 mm, mounting: Wave soldering, pin layout: Linear pinning, solder pin [P]: 3.8 mm, number of solder pins per potential: 1, plug-in system: HSC 2,5, Pin connector pattern alignment: Standard, locking: without, mounting method: without, type of packaging: packed in cardboard

# ME-IO 18,8 DEV-KIT KMGY - Housing set



2202527

<https://www.phoenixcontact.com/in/products/2202527>

## HSCP-SP 2,5-1U4-7035 - PCB connector

2201780

<https://www.phoenixcontact.com/in/products/2201780>



PCB connector, nominal cross section: 2.5 mm<sup>2</sup>, color: light gray, nominal current: 8 A, rated voltage (III/2): 320 V, contact surface: Sn, contact connection type: Socket, number of potentials: 4, number of rows: 2, number of positions: 4, number of connections: 4, product range: HSCP-SP 2,5-..., pitch: 5 mm, connection method: Push-in spring connection, conductor/PCB connection direction: 0 °, locking clip: - Locking clip, plug-in system: HSC 2,5, locking: without, mounting method: without, type of packaging: packed in cardboard, Color of the spring lever: orange

---

## ME-IO 18,8 C 2U 7035 - Housing cover

2201799

<https://www.phoenixcontact.com/in/products/2201799>



DIN rail housing, 2U, Housing cover, width: 18.9 mm, height: 21.8 mm, depth: 26 mm, color: light gray (similar RAL 7035)

# ME-IO 18,8 DEV-KIT KMGY - Housing set



2202527

<https://www.phoenixcontact.com/in/products/2202527>

## HSC-LR 7U KIT 2003 - Locking

2201795

<https://www.phoenixcontact.com/in/products/2201795>



DIN rail housing, 7U, Lock and Release system, width: 16.1 mm, height: 89.95 mm, depth: 8.8 mm, color: orange (similar RAL 2003)

---

## ME-IO 18,8 B/FE 9U TBUS 7035 - Mounting base housing

2201809

<https://www.phoenixcontact.com/in/products/2201809>



DIN rail housing, Lower housing part, with metal foot catch, with functional ground contact, with vents, width: 18.9 mm, height: 109.6 mm, depth: 64.3 mm, color: light gray (similar RAL 7035), cross connection: DIN rail connector (optional), number of positions cross connector: 5

# ME-IO 18,8 DEV-KIT KMGY - Housing set



2202527

<https://www.phoenixcontact.com/in/products/2202527>

## Technical data

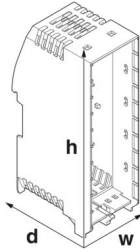
### Notes

Recommendation	Material of contact pads for bus connector, galvanic gold (hard gold)
----------------	-----------------------------------------------------------------------

### Product properties

Product type	Stackable housing set
Housing type	DIN rail housing
Housing series	ME-IO
Max. number of positions	28 (pitch: 5 mm)
Type	Lower housing part, with metal foot catch, with functional ground contact, with 7U Lock and Release system
Ventilation openings present	yes

### Dimensions

Dimensional drawing	
Width	18.9 mm
Height	113.3 mm
Depth	76.5 mm
Depth from top edge of DIN rail	70 mm

### PCB design

PCB thickness	1.4 mm ... 1.8 mm
---------------	-------------------

### Material specifications

Color (Housing)	light gray (RAL 7035)
Flammability rating according to UL 94	V0
Housing material	PA
Surface characteristics	untreated

### Environmental and real-life conditions

#### Ambient conditions

Max. IP code to attain	IP20
Ambient temperature (operation)	-40 °C ... 105 °C (depending on power dissipation)
Ambient temperature (storage/transport)	-40 °C ... 55 °C
Ambient temperature (assembly)	-5 °C ... 100 °C

# ME-IO 18,8 DEV-KIT KMGY - Housing set



2202527

<https://www.phoenixcontact.com/in/products/2202527>

Relative humidity (storage/transport)	80 %
---------------------------------------	------

## PCB data

Number of PCB holders	1
Type of PCB mount	Latching
Thickness of the PCB	1.4 mm ... 1.8 mm

## Mounting

Mounting type	DIN rail mounting
---------------	-------------------

# ME-IO 18,8 DEV-KIT KMGY - Housing set

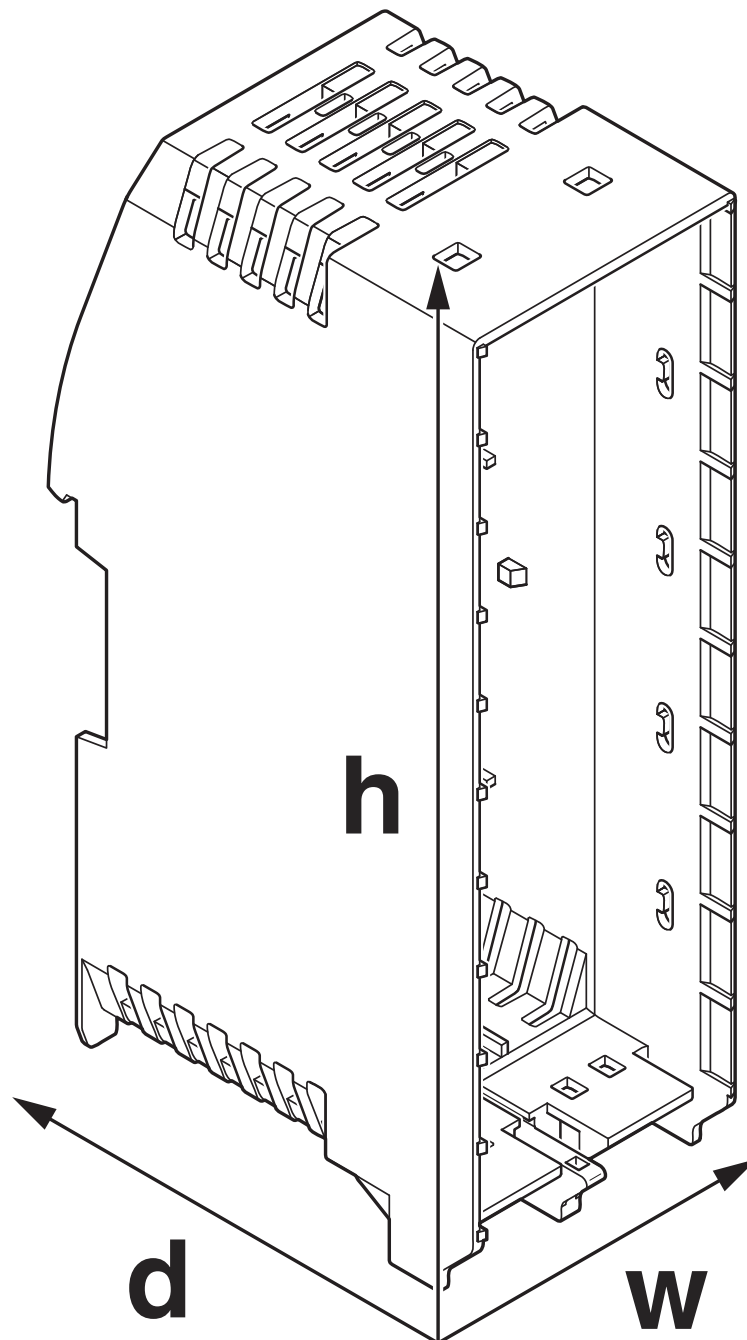
2202527

<https://www.phoenixcontact.com/in/products/2202527>



## Drawings

Dimensional drawing



Schematic figure for illustrating the item dimensions. The figure is not of the desired product. For further details, refer to the product drawings in the "Downloads" tab.

# ME-IO 18,8 DEV-KIT KMGY - Housing set

2202527

<https://www.phoenixcontact.com/in/products/2202527>



## Approvals

🔗 To download certificates, visit the product detail page: <https://www.phoenixcontact.com/in/products/2202527>



**UL Recognized**

Approval ID: E240868



# ME-IO 18,8 DEV-KIT KMGY - Housing set



2202527

<https://www.phoenixcontact.com/in/products/2202527>

## Classifications

### ECLASS

ECLASS-11.0	27182702
ECLASS-13.0	27190301

### ETIM

ETIM 9.0	EC001031
----------	----------

### UNSPSC

UNSPSC 21.0	31261500
-------------	----------

# ME-IO 18,8 DEV-KIT KMGY - Housing set



2202527

<https://www.phoenixcontact.com/in/products/2202527>

## Environmental product compliance

EU RoHS	
Fulfills EU RoHS substance requirements	Yes, No exemptions
China RoHS	
Environment friendly use period (EFUP)	EFUP-E
	No hazardous substances above the limits
EU REACH SVHC	
REACH candidate substance (CAS No.)	No substance above 0.1 wt%

# ME-IO 18,8 DEV-KIT KMGY - Housing set



2202527

<https://www.phoenixcontact.com/in/products/2202527>

## Accessories

### ME-IO 18,8/28 TBUS DEV-PCB - PCB

2202548

<https://www.phoenixcontact.com/in/products/2202548>

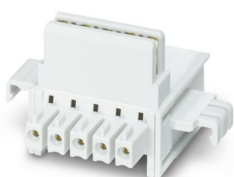
Perfboard for the ME-IO 18,8 DEV-KIT; for HSCH 2,5 header; ideal for manual soldering



### ME 18,8 TBUS 1,5/5 VPE1 KMGY - DIN rail bus connectors

2202549

<https://www.phoenixcontact.com/in/products/2202549>



DIN rail connector, color: light gray, nominal current: 8 A (parallel contacts), rated voltage (III/2): 125 V, number of positions: 5, product range: TBUS5-18,8..., pitch: 3.81 mm, mounting: DIN rail mounting, locking: without, mounting method: without, type of packaging: packed in cardboard, Item with gold-plated contacts, bus connectors for connecting with electronics housings, 5 parallel contacts

Phoenix Contact 2025 © - all rights reserved

<https://www.phoenixcontact.com>

PHOENIX CONTACT (I) Pvt. Ltd.

A-58/2, Okhla Industrial Area, Phase - II, New Delhi-110 020

+91.1275.71420

[info@phoenixcontact.co.in](mailto:info@phoenixcontact.co.in)