

Linear fittings

EVNL LED fitting - zones 2, & 22



Features

- Operating life up to 100 000 h
- High lumen output - 5 000 lumens with 100% yield
- LED module with diffuser
- Double central locking for ingress protection
- All components mounted on hinged and removable gear tray which gives easy access for maintenance
- Including accessories (cable gland, plugs & fixing brackets)

EVNL LED fitting

Approvals & certifications



Specifications

Main body constructed of glass reinforced polyester for high impact strength

UV protected polycarbonate diffuser to resist harsh environments

Rated voltage
100-254Vac 50-60Hz

EOL (End of life) the ballast prevents the lamp cap at the end of lamp life cycle from overheating

Wiring configuration: 5 wires
3x entries M20

Standards

Approved to:	EN 60079-0 : General requirements
	EN 60079-15 : Enclosure "n"
	EN 60079-31 : Enclosure "t"
EC Type examination certificate to:	Directive 2014/34/EU
	LCIE 15 ATEX 1010X
	IECEx LCIE 15.0018X
	Ex II 3 G
	Ex nA IIC T5 for -40°C to +25°C, T4 for -40°C to +60°C Gc
	Ex II 3 D
	Ex tc IIIIC T65°C for -40°C to +35°C or T85°C for -40°C to +60°C Dc
Photobiological safety	IEC62471 Exempt group
EMC Directive (2004/108/CE) - April 2016 (2014/30/UE)	EN 55015 : Conducted emission test and radiated emission test
	EN 61547 : CEM immunity
	EN 61000-3-2 : Harmonic current Emissions Class C
	EN 61000-3-3 : Limitation of voltage changes and flickers
Low voltage Directive (2006/95/CE) - April 2016 (2014/35/UE)	EN 60598-1 : Luminaire general requirements and tests, including dielectric strength and isolation resistance
Glow wire test:	960°C
Operating temperature:	-20°C to +55°C
IP test:	IEC 60529: IP66
Impact protection index:	IEC 62262: IK10

01 Hinged & removable gear tray

01



Linear fittings

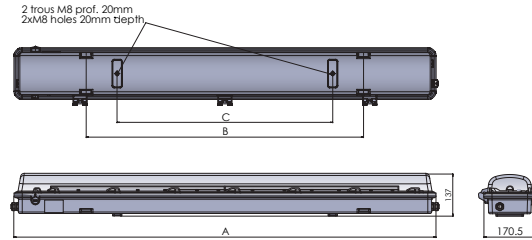
EVNL LED fitting - zones 2 & 22



EVNL Linear LED fitting

- 5 wires
- Glass Diffuser
- Suitable for use in Zones 1, 2, 21, 22

Dimensions



EVNL 5 wires: Equipped w with 1 cable gland & 2 plugs

Type For		Wiring Configuration	Light Rating W	Current A @ 230V	Lumen Output lm	Operating life		Efficiency Lm/W	Dimensions mm			Weight kg
non armored cable	armored cable					at 25°C	at 55°C		A	B	C	
EVNL120-0000	EVNL120-D000	5 wires*	1 x 12	0.07	1 194	100 000	45 000	95	785	432	400	4.00
EVNL140-0000	EVNL140-D000	5 wires*	1 x 25	0.12	2 353	90 000	75 000	94	1 370	900	700	6.80
EVNL165-0000	EVNL165-D000	5 wires*	1 x 31	0.16	2 450	80 000	60 000	79	1 670	900	700	8.20
EVNL220-0000	EVNL220-D000	5 wires*	1 x 19	0.10	1 613	80 000	35 000	85	785	432	400	4.40
EVNL240-0000	EVNL240-D000	5 wires*	1 x 56	0.27	4 257	70 000	50 000	76	1 370	900	700	7.60
EVNL265-0000	EVNL265-D000	5 wires*	1 x 71	0.34	5 076	70 000	50 000	71	1 670	900	700	8.80



EVNL 5 wires: Equipped w with 2 cable glands & 1 plug

EVNL120-B000	EVNL120-E000	5 wires**	1 x 12	0.07	1 194	100 000	45 000	95	785	432	400	4.00
EVNL140-B000	EVNL140-E000	5 wires**	1 x 25	0.12	2 353	90 000	75 000	94	1 370	900	700	6.80
EVNL165-B000	EVNL165-E000	5 wires**	1 x 31	0.16	2 450	80 000	60 000	79	1 670	900	700	8.20
EVNL220-B000	EVNL220-E000	5 wires**	1 x 19	0.10	1 613	80 000	35 000	85	785	432	400	4.40
EVNL240-B000	EVNL240-E000	5 wires**	1 x 56	0.27	4 257	70 000	50 000	76	1 370	900	700	7.60
EVNL265-B000	EVNL265-E000	5 wires**	1 x 71	0.34	5 076	70 000	50 000	71	1 670	900	700	8.80

Note. * For armored cable with 1 continuity plate. ** For armored cable with 2 continuity plates.

Technical information	
LED installed	Set of LED modules with integ rated diffuser Colour temperature 4 000°K L70/B10 at 25°C (70% lumen output/ 90% active LED) according to operating life.
Photometric curve	See page 189
Rated voltages	Electronic driver: 100- 254Vac 50/60Hz.
Power factor	0.9
CRI	84
Wiring Configuration	5 wires
Dielectrical class	I
Grounding system	TNS, TNC, TT, IT neutral system
Inrush current	for the part EVNL240 I peak = 60A @230Vac delta t = 275µs Max. light fittings per circuit breaker
Type	10A 16A 20A 25A
B	4 7 9 11
C	7 12 15 18

Technical information	
Grounding system	TNS, TNC, TT, IT neutral system
Terminal block (screws plug in terminal block)	10mm ² (rigid wire), 6mm ² (flexible wire) Terminals supplied L1, L2, L3, N, PE (looping possible with one additional cable gland)
Cable entries	Three entries M20
For non-armoured cable:	included two M20 nylon plugs (EX-M20) and one M20 nylon cable gland, diameter 6-12mm (EXCGM20S)
For armoured cable:	included continuity plate - two M20 nylon plugs (EX-M20) and one M20 nickel plated brass cable gland, diameter 6-12/ 8.5-16mm (EXN04MMC1)
Housing	Fiberglass reinforced polyester housing for high impact strength, UV protected polycarbonate diffuser to resist harsh environments, White painted steel gear tray & 2x M8 Stainless steel 316L inser
Fixing (included with product)	V015 - 2x Two zinc-plated steel brackets for ceiling mounting

Fluorescent fitting to a LED fitting

01 T8 fluorescent lamp 3d photometric data

02 LED module 3d photometric data

03 Remove existing fluorescent gear tray

04 Replace with LED gear tray with driver

05 Connect LED gear tray to power supply

What are the LED benefits?

The benefits of the LED technology consist in a significant improvement in the life expectancy of your product, lower power consumption and the improvement of the photometric features.

T8 fluorescent lamp - EVN240-00000 3D view

- Lumen output (light fitting): 5 005lm
- Lumen output (lamp): 6 700lm
- Yield: 74%
- Rating per light fitting: 73,5W
- Light source: 2x L36W/840 OSRAM Lumilux
- Cool White (corrector factor 1,00)

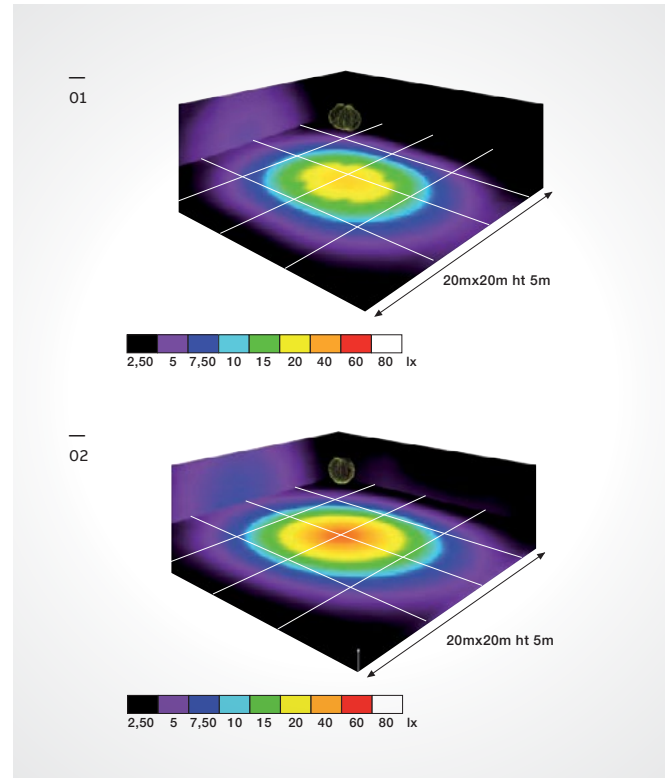
LED module - EVNL240-00000 3D view

- Lumen output (light fitting): 4 421lm
- Lumen output (lamp): 4 433lm
- Yield: 98%
- Rating per light fitting: 58,0W
- Light source: 1x LED module (corrector factor 1,00)

MRO benefits

How can I upgrade my current light fitting?

Tubular fittings could be switched from fluorescent to LED technology by easy sliding gear tray without any specific tool. The fixture with 1 or 2 fluorescent tubes T8 could be replaced by only one LED module fixed on the new gear tray.



How is my upgraded LED light fitting certified?

The EC type (ATEX) certification, EC declaration and the installation notice of the fluorescent fitting remain valid for all the LED fittings (more details on demand).

Gear trays parts to upgrade from a “fluorescent” to a “LED” fitting - LED gear tray with driver 100-240Vac 50/60Hz:

- V0041X20WEL - To upgrade EVN120 to EVNL120
- V0041X40WEL - To upgrade EVN140 to EVNL140
- V0041X65WEL - To upgrade EVN165 to EVNL165
- V0042X20WEL - To upgrade EVN220 to EVNL220
- V0042X40WEL - To upgrade EVN240 to EVNL240
- V0042X65WEL - To upgrade EVN265 to EVNL265

03



04



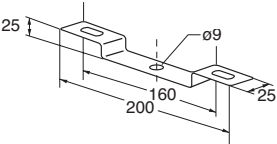
05

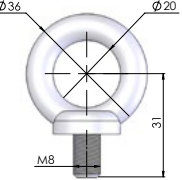


Linear fittings - accessories

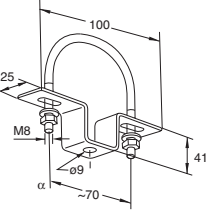
EVNL - zones 2 & 22

Fixing accessories*

Brackets	Type	Specifications
	V015	2 x pair of zinc plated steel for ceiling mounting (Included with product)
	V016	Stainless steel 316L brackets for ceiling mounting

Hook	Type	Specifications
	V024	2x Zinc plated steel suspension hook

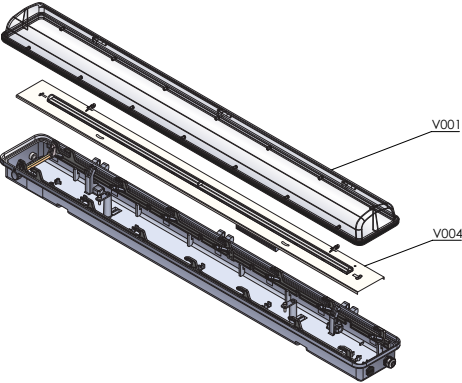
Hook	Type	Specifications
	V014	2x Rapid ceiling mounting with stainless steel clip

Fixing bracket and flange	Type	Specifications
	V018	2x zinc plated steel pole mounted brackets for 1 1/4" & 1 1/2"
	V019	2x zinc plated steel pole mounted brackets for 2"
	V021	2x Stainless steel 316L pole mounted brackets for 1 1/4" & 1 1/2"
	V022	2x Stainless steel 316L pole mounted brackets 2"

* Screws and locknuts supplied

Linear fittings - spare parts

EVNL - zones 2 & 22

Spare parts	Type	Specifications
	V00120W	20W diffuser with gasket for EV. range
	V00140W	40W diffuser with gasket for EV. range
	V00165W	65W diffuser with gasket for EV. range
	V0041X20WEL	Gear tray 12,6W with driver 100-254Vac 50-60Hz and bracket kit of gear tray for EVNL120
	V0041X40WEL	Gear tray 25W with driver 100-254Vac 50-60Hz and bracket kit of gear tray for EVNL140
	V0041X65WEL	Gear tray 58W with driver 100-254Vac 50-60Hz and bracket kit of gear tray for EVNL165
	V0042X20WEL	Gear tray 19W with driver 100-254Vac 50-60Hz and bracket kit of gear tray for EVNL220
	V0042X40WEL	Gear tray 56W with driver 100-254Vac 50-60Hz and bracket kit of gear tray for EVNL240
	V0042X65WEL	Gear tray 71W with driver 100-254Vac 50-60Hz and bracket kit of gear tray for EVNL265
	V02520x40W	Brass continuity plate for EV. 120, EV. 220, EV. 140, EV. 240
	V02565W	Brass continuity plate for EV. 165, EV. 265
	EXCGM20S	M20 Exe IIC nylon cable gland for non armoured cable diameter 6-12mm, locknut available separately as LNPB/M20
	EXN04MMC1K	Kit M20 Ex-d IIC Ex-e II Ex-td double compression nickel plated cable gland for armoured cable diameter inner 6-12 outer 8.5-16mm locknut, sealing gasket