

Features

- Strong and durable zinc and steel construction
- 90-degree opening angle
- Removable pin which allows quick and easy removal of the door giving improved access for maintenance

RS PRO Hinges

RS Stock No.: 0335172



RS Professionally Approved Products bring to you professional quality parts across all product categories. Our product range has been tested by engineers and provides a comparable quality to the leading brands without paying a premium price.

Product Description

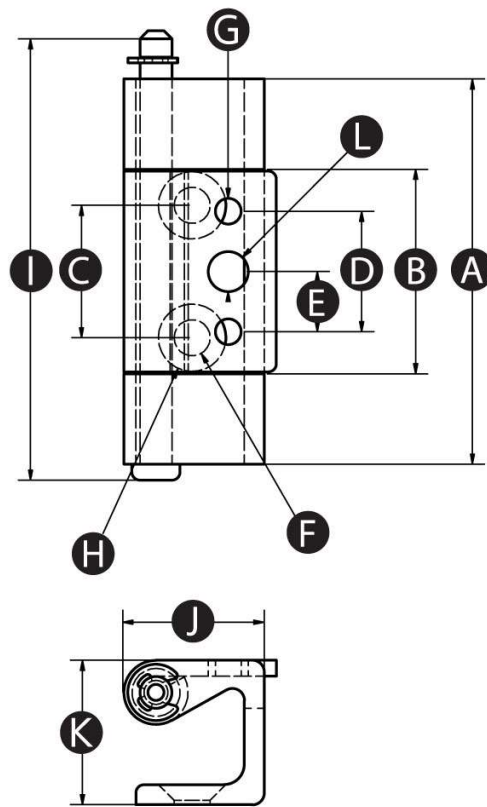
Chrome plated die cast zinc hinge, zinc plated steel mating part and nickel plated steel pin. 90 degree opening angle. A removeable pin allows the door to be separated from the enclosure, giving improved access. The pin is secured with a circlip. Designed for use in industrial enclosures and cabinets.

General Specifications

Length	48mm
Material	Diecast zinc
Opening angle	90 degrees
Colour	Grey
Application	Enclosures, HVAC, machinery, equipment, construction industry
Radial load (N)	228
Axial load (N)	290

Mechanical Specifications

A	48
B	25
C	16.5
D	15
E	-
F	4.5
G	3.2
H	7.5
I	53.5
J	17.5
K	18
L	-



Similar Products

Stock No.	Brand	Product Name	Length	Opening Angle
0335172	RS PRO	Diecast Zinc Concealed Hinge	48mm	90 degrees
0335174	RS PRO	Stainless Steel Concealed Hinge	48mm	90 degrees