



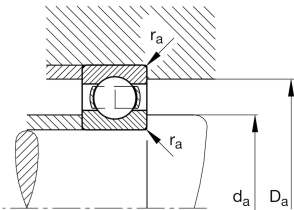
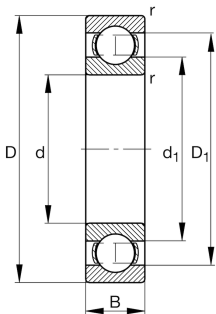
FAG

61815-Y-C3 [🔗](#)

Deep groove ball bearing

Deep groove ball bearing 618...Y, single row,
brass sheet metal cage

Technical information



Your current product variant

Sealing	Without	Not sealed
Cage	Y	Brass sheet metal
Tolerance class	PN	Normal (PN)
Dimensional / heat stabilization	S0	Rings dimensional stabilized up to 150°
Lubricant	Without	Bearing not greased
Radial internal clearance	C3 (Group 3)	Internal clearance larger than CN
Bore type	Z	Cylindrical

Main Dimensions & Performance Data

d	75 mm	Bore diameter
D	95 mm	Outside diameter
B	10 mm	Width
C _r	13,700 N	Basic dynamic load rating, radial
C _{0r}	13,400 N	Basic static load rating, radial
C _{ur}	890 N	Fatigue load limit, radial
n _G	13,000 1/min	Limiting speed
n _{gr}	4,950 1/min	Reference speed
≈m	0.15 kg	Weight



Mounting dimensions

$d_{a\min}$	78.2 mm	Minimum diameter shaft shoulder
$D_{a\max}$	91.8 mm	Maximum diameter of housing shoulder
$r_{a\max}$	0.6 mm	Maximum fillet radius

Dimensions

r_{\min}	0.6 mm	Minimum chamfer dimension
D_1	88.57 mm	Shoulder diameter outer ring
d_1	81.6 mm	Shoulder diameter inner ring

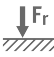
Temperature range

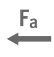
T_{\min}	-30 °C	Operating temperature min.
T_{\max}	150 °C	Operating temperature max.


Calculation factors


f_0	16.1	Calculation factor
-------	------	--------------------


Characteristics


- 

Radial load
- 

Axial load in one direction
- 

Axial load in two directions
- 

Grease Lubrication
- 

Oil Lubrication
- 

Not sealed