

HO 54 W/840

LUMILUX T5 HO | Tubular fluorescent lamps 16 mm, high output



Areas of application

- Industry
- Public buildings
- Offices
- Tunnels, underpasses
- Car parks

Product benefits

- Excellent luminous flux
- Up to 20 % more economical than LUMILUX T8
- Up to 50 % smaller volume than comparable T8 lamps
- Natural colors

Product features

- Very good lumen maintenance: 90 % throughout the service lifetime of the lamp
- Long average lifetime: up to 24,000 h (with QUICKTRONIC ECG)
- Good color rendering group: 1B (R_a : 80...89)
- Dimmable



Technical data

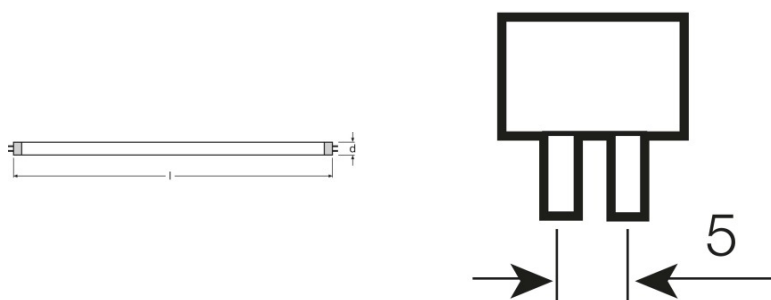
Electrical data

| | |
|-------------------------------------|---------|
| Nominal voltage | 230 V |
| Nominal wattage | 54.10 W |
| Rated lamp efficacy (HF data 25 °C) | 82 lm/W |
| Rated wattage | 54.10 W |

Photometrical data

| | |
|-------------------------------|--------------------|
| Color rendering index Ra | ≥80 |
| Rated luminous flux | 4450 lm |
| Luminous flux at 25 °C | 4450 lm |
| Luminous flux at 35 °C | 5000 lm |
| Light color | 840 |
| Color temperature | 4000 K |
| Nominal luminous flux | 4450 lm |
| Light color as per EN 12464-1 | LUMILUX Cool White |
| Rated LLMF at 2,000 h | 0.95 |
| Rated LLMF at 4,000 h | 0.92 |
| Rated LLMF at 6,000 h | 0.91 |
| Rated LLMF at 8,000 h | 0.90 |
| Rated LLMF at 12,000 h | 0.90 |
| Rated LLMF at 16,000 h | 0.90 |
| Rated LLMF at 20,000 h | 0.89 |

Dimensions & weight



| | |
|---|------------|
| Tube diameter | 16 mm |
| Length | 1149.0 mm |
| Length with base excl. base pins/connection | 1149.00 mm |

Product datasheet

| | |
|------------------|---------|
| Diameter | 16.0 mm |
| Maximum diameter | 16.0 mm |

Temperatures

| | |
|--|---------|
| Rated ambient temp.w.max.luminous flux | 35.0 °C |
|--|---------|

Lifespan

| | |
|--|-----------------------|
| Service life | 19000 h ¹⁾ |
| Lifespan | 24000 h ¹⁾ |
| Rated lamp survival factor at 2,000 h | 0.99 |
| Rated lamp survival factor at 4,000 h | 0.99 |
| Rated lamp survival factor at 6,000 h | 0.99 |
| Rated lamp survival factor at 8,000 h | 0.99 |
| Rated lamp survival factor at 12,000 h | 0.99 |
| Rated lamp survival factor at 16,000 h | 0.97 |
| Rated lamp survival factor at 20,000 h | 0.85 |
| Operation mode LLMF/LSF | HF |
| Rated lamp life time | 24000 h |
| Nominal lamp life time | 24000 h |

¹⁾ With preheat ECG

Additional product data

| | |
|-----------------------------------|--|
| Base (standard designation) | G5 |
| Lamp mercury content | 1.5 mg |
| Appropriate disposal acc. to WEEE | Yes |
| Footnote only for product | Suitable for ECG operation only/Lamp designed for internal luminaire temperatures of 30...40 °C; optimum luminous flux achieved at 35 °C |

Capabilities

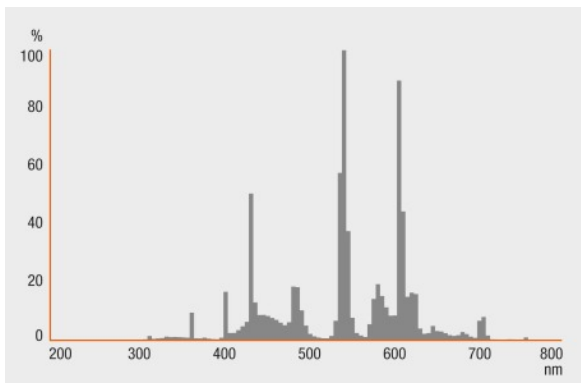
| | |
|---------------------|-----|
| Dimmable | Yes |
| Suitable for indoor | Yes |

Certificates & standards

| | |
|-------------------------|--------------|
| Energy efficiency class | A+ |
| Energy consumption | 60 kWh/1000h |

Light Distribution

Product datasheet



Spectral power distribution

System guarantee

OSRAM System+ Guarantee in combination with OSRAM ECGs

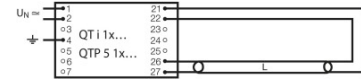
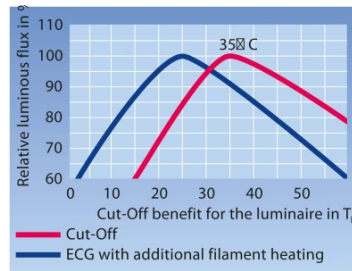
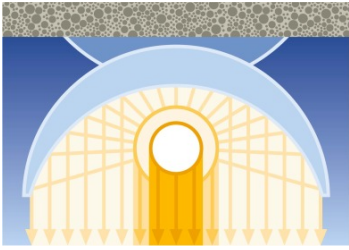


Guarantee

Safety advice

In case of lamp breakage: www.osram.com/brokenlamp

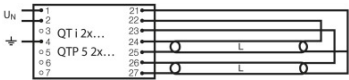
Product datasheet



Others graphics

Others graphics

Circuit diagram



Circuit diagram

Logistical Data

| Product code | Product description | Packaging unit (Pieces/Unit) | Dimensions (height x width x length) | Volume | Gross weight |
|---------------|---------------------|------------------------------|--------------------------------------|-----------------------|--------------|
| 4050300453408 | HO 54 W/840 | Shipping carton box 40 | 194 mm x 83 mm x 1200 mm | 19.32 dm ³ | 4713.00 g |
| 4050300591599 | HO 54 W/840 | Shipping carton box 20 | 91 mm x 83 mm x 1182 mm | 8.93 dm ³ | 2662.50 g |

The mentioned product code describes the smallest quantity unit which can be ordered. One shipping unit can contain one or more single products. When placing an order, for the quantity please enter single or multiples of a shipping unit.

References / Links

For more information on QUICKTRONIC electronic control gear go to

► www.osram.com/QUICKTRONIC

Product datasheet

Disclaimer

Subject to change without notice. Errors and omission excepted. Always make sure to use the most recent release.

HO 54 W/840

LUMILUX T5 HO | Tubular fluorescent lamps 16 mm, high output

| Product name | Product name ECG | EAN | Nominal current | Nominal wattage + Power loss | Luminous flux at 35 °C | Number of lighting outlets |
|--------------|-----------------------|---------------|-----------------|------------------------------|------------------------|----------------------------|
| HO 54 W/840 | QT 1x54 DIM | 4008321640338 | 0.26 A | 58.10 W | 4450 lm | 1 |
| | QT 2x54 DIM | 4008321640437 | 0.51 A | 115.90 W | 4450 lm | 2 |
| | QT-FIT 5/8 1x54-58 | 4008321873828 | 0.25 A | 59.00 W | 4450 lm | 1 |
| | QT-FIT 5/8 2x54-58 | 4008321873842 | 0.49 A | 116.00 W | 4450 lm | 2 |
| | QTi 1x28/54/35/49 GII | 4008321383358 | 0.26 A | 58.00 W | 4450 lm | 1 |
| | QTi 1x28/54 DIM | 4050300870588 | 0.26 A | 58.80 W | 4450 lm | 1 |
| | QTi 2x28/54/35/49 GII | 4008321383419 | 0.51 A | 115.00 W | 4450 lm | 2 |
| | QTi 2x28/54 DIM | 4050300870717 | 0.51 A | 115.00 W | 4450 lm | 2 |
| | QTi DALI 1x28/54 DIM | 4050300870809 | 0.26 A | 58.80 W | 4450 lm | 1 |
| | QTi DALI 2x28/54 DIM | 4050300870502 | 0.51 A | 115.00 W | 4450 lm | 2 |
| | QTP5 1x54 | 4008321329394 | 0.26 A | 59.00 W | 4450 lm | 1 |
| | QTP5 2x54 | 4008321329097 | 0.50 A | 115.00 W | 4450 lm | 2 |
| | QTP-OPTIMAL 1x54-58 | 4008321873729 | 0.26 A | 54.00 W | 4450 lm | 1 |
| | QTP-OPTIMAL 2x54-58 | 4008321880253 | 0.26 A | 107.00 W | 4450 lm | 2 |