



# 1100 Series Disposable Ear Plugs

## Data Sheet

3M™ 1100 Foam Ear Plugs  
3M™ 1110 Corded Foam Ear Plugs



### Main Features:

- Soft disposable polyurethane foam ear plugs providing extra comfort.
- The tapered shape is designed to adjust to most ear canals.
- They are made from soft hypo-allergenic material.
- The bright orange colour permits high visibility and makes safety checks easier.

### Applications:

The 3M 1100/1110 - Ear Plugs can be used in many industries where harmful noise is present such as:

- Metal Industry
- Automotive
- Textile
- Construction
- Aircraft
- Woodworking
- Printing

### Approvals:

The 3M 1100/1110 Ear Plugs have been shown to meet the Basic Safety Requirements under Article 10 of the European Community Directive 89/686.

These plugs are tested to EN352-2:2002 and are CE marked.

### Materials:

The following materials are used in the production of the 3M 1100/1110 Ear Plugs:

- Plugs – Polyurethane foam
- Cord – Polyester

### Attenuation:

Attenuation data for the 3M 1100/1110 Ear Plugs (according to EN24869-1)

F (Hz)	63	125	250	500	1000	2000	4000	8000
Mf (dB)	30.0	33.1	36.3	38.4	38.7	39.7	48.3	44.4
sf (dB)	3.9	5.0	7.4	6.2	5.6	4.3	4.5	4.4
Mf-sf (dB)	26.1	28.1	28.9	32.2	33.1	35.4	43.8	40.0

SNR = 37dB    H = 37dB    M = 34dB    L = 31dB

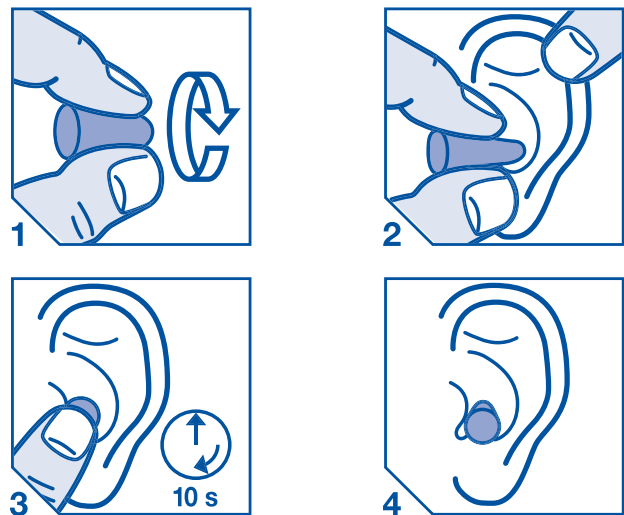
APVf (dB) = Mf -sf(dB)

### Information:

A range of information must be provided on the packaging. The packaging of the 3M 1100/1110 Ear Plugs complies with the requirements of EN352-2:2002. A copy of this European standard can be purchased from your national standards body.

### Fitting Instructions:

The plugs should be fitted in accordance with the diagrams. Care should be taken to refit the plug if it becomes dislodged through movement.



### Maintenance:

These plugs are disposable and should be discarded after use.

## Warnings:

---

To provide proper protection, the 3M 1100/1110 Ear Plugs should be:

- 1) suitable for the job
- 2) fitted properly
- 3) worn during all times of exposure to noise
- 4) worn by only one worker, not shared replaced when necessary

Hearing protection is only effective if it is correctly selected, fitted and worn throughout the time when the wearer is exposed to the noise hazard.

3M offers advice on the selection of products and training in the correct fitting and usage.

For help with selecting the most appropriate forms of PPE and relevant Health & Safety legislation, or for more detailed product information, please contact the 3M Health & Safety Helpline on: 0870 60 800 60 (UK)  
1 800 320 500 (Republic of Ireland).



**Occupational Health and Environmental Safety Group**

**3M United Kingdom PLC**

3M Centre  
Cain Road, Bracknell  
Berkshire RG12 8HT  
Tel: 0870 60 800 60

**3M Ireland**

3M House, Adelphi Centre, Upper Georges St.  
Dun Laoghaire  
Co. Dublin, Ireland  
Tel: 1 800 320 500