



Passive Components > Resistors > Through-Hole Resistors > Wirewound Resistor: Vertical Mount



Resistor Type: **Power Resistor**

Element Type: **Wire Wound**

Power Rating: **17 W**

Lead Type: **Axial-Leaded**

Termination Area Base Material: **Brass**

[All Wirewound Resistor: Vertical Mount \(166\)](#)

Features

Product Type Features

Resistor Type	Power Resistor
Element Type	Wire Wound

Configuration Features

Number of Resistors	1
---------------------	---

Electrical Characteristics

Power Rating	17 W
--------------	------

Body Features

Lead Type	Axial-Leaded
-----------	--------------

Termination Features

Termination Area Base Material	Brass
Number of Terminations	2

Usage Conditions

Operating Temperature Range	-55 – 350 °C
-----------------------------	--------------

Packaging Features

Packaging Method	Loose Piece - Box
------------------	-------------------

Product Compliance



For compliance documentation, visit the product page on [TE.com](#)>

EU RoHS Directive 2011/65/EU	Compliant
EU ELV Directive 2000/53/EC	Compliant
China RoHS 2 Directive MIIT Order No 32, 2016	No Restricted Materials Above Threshold
EU REACH Regulation (EC) No. 1907/2006	Current ECHA Candidate List: JAN 2025 (247) Candidate List Declared Against: JUNE 2023 (235) Does not contain REACH SVHC
Halogen Content	Low Halogen - Br, Cl, F, I < 900 ppm per homogenous material. Also BFR/CFR/PVC Free
Solder Process Capability	Wave solder capable to 265°C

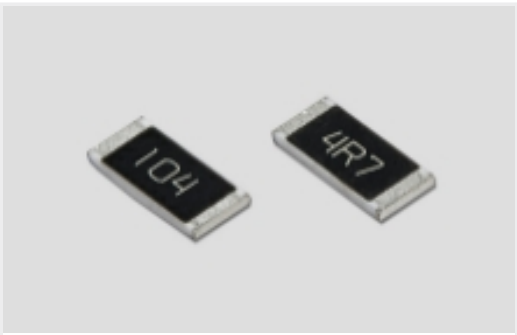
Product Compliance Disclaimer

This information is provided based on reasonable inquiry of our suppliers and represents our current actual knowledge based on the information they provided. This information is subject to change. The part numbers that TE has identified as EU RoHS compliant have a maximum concentration of 0.1% by weight in homogenous materials for lead, hexavalent chromium, mercury, PBB, PBDE, DBP, BBP, DEHP, DIBP, and 0.01% for cadmium, or qualify for an exemption to these limits as defined in the Annexes of Directive 2011/65/EU (RoHS2). Finished electrical and electronic equipment products will be CE marked as required by Directive 2011/65/EU. Components may not be CE marked. Additionally, the part numbers that TE has identified as EU ELV compliant have a maximum concentration of 0.1% by weight in homogenous materials for lead, hexavalent chromium, and mercury, and 0.01% for cadmium, or qualify for an exemption to these limits as defined in the Annexes of Directive 2000/53/EC (ELV). Regarding the REACH Regulation, the information TE provides on SVHC in articles for this part number is based on the latest European Chemicals Agency (ECHA) 'Guidance on requirements for substances in articles' posted at this URL: <https://echa.europa.eu/guidance-documents/guidance-on-reach>

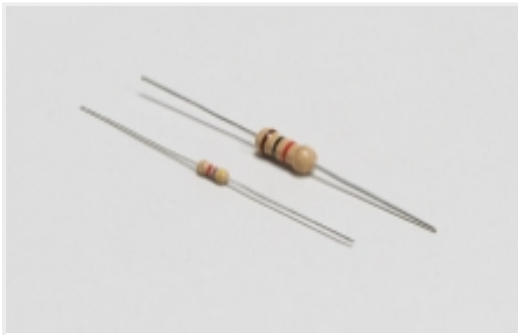
Compatible Parts



Also in the Series | [CGS SBC](#)

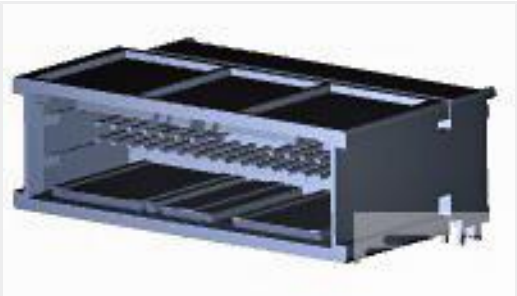


Surface Mount Resistors(1)

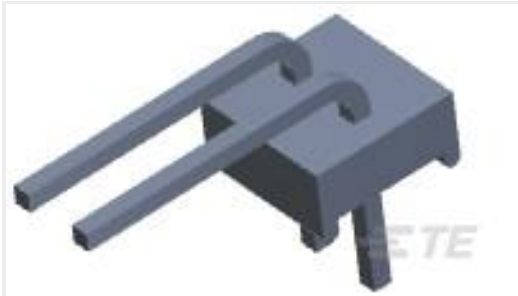


Through-Hole Resistors(212)

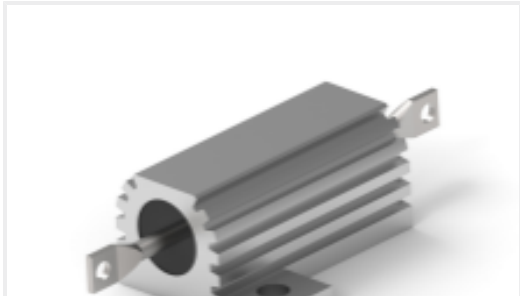
Customers Also Bought



TE Part #2177419-3  
32POS,TAB 0.5X0.4,HEADER ASSY,  
CODA



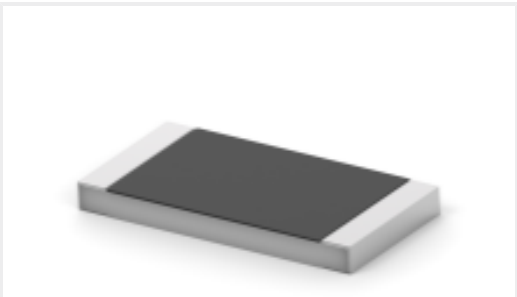
TE Part #640453-2  
02P MTA100 HDR ASSY SQ R/A



TE Part #CAT-C339-T419  
Power Resistor: Aluminum Housed, 75  
Watt



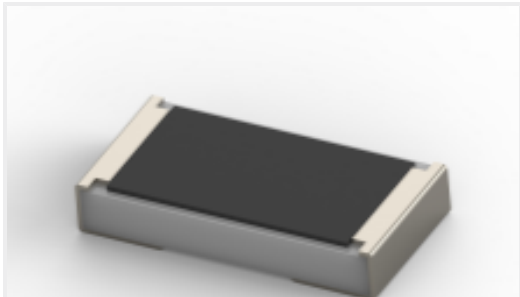
TE Part #1879352-1  
RR02 5% R33 AMMO



TE Part #CAT-C339-A76  
SMD Power Resistor: 1 Watt, 3520  
Series



TE Part #1-1879508-8  
CRGH0805 1% 15R 0.33W



TE Part #2176468-2  
TLRP 2010 1.0W R020 1% 75PPM 4K RL



TE Part #521384-4  
ASSY PL R/A RAST5 HEADER 04-A

Documents

Product Drawings

BCV SUPPORT PILLAR

English

Datasheets & Catalog Pages

1309350\_PASSIVE\_COMPONENT

English

8-1773459-4\_POWER\_FILTERING\_AND\_RESISTIVE\_SOLUTIONS\_FOR\_ELEVATORS\_AND\_ESCALATORS

English