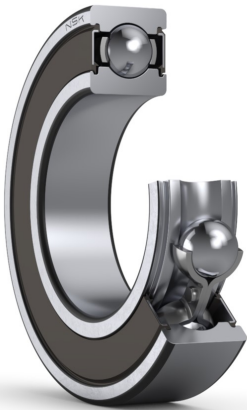




PRODUCT DATASHEET

Datasheet creation date: 2025/07/08 5:15 (UTC)



6300VV

Single-Row Deep Groove Ball Bearings

Parts Number

6300VVC3

Boundary Dimensions

d	10	mm	Bore diameter
D	35	mm	Outside diameter
B	11	mm	Width
r (min.)	0.6	mm	Chamfer dimension

Basic Load Ratings

Cr	8900	N	Basic dynamic load rating
C0r	3450	N	Basic static load rating

Speeds

Grease	26000	min-1	Grease lubrication
--------	-------	-------	--------------------

Abutment and Fillet Dimensions

da (min.)	14	mm	Diameter of shaft abutment
da (max.)	16.5	mm	Diameter of shaft abutment
Da (max.)	31	mm	Diameter of housing abutment
ra (max.)	0.6	mm	Radius of shaft or housing fillet
Dx (min.)	0	mm	Diameter of snap ring recess in the housing
Cy (max.)	0	mm	Distance from outer ring side face to snap ring back face

Calculation factors

fo	11.2	Factor
----	------	--------

Additional information

z	6	Number of Balls	
Dw	7.144	mm	Ball Diameter

Mass

Mass approx.	0.052	kg	Mass approx.
--------------	-------	----	--------------

