

Features

- Nylon 66 housing to UL94V-2
- Moulded black plastic body
- I/O marking option on actuator
- Secure snap-in panel mounting
- Ergonomically curved actuator

RS PRO Rocker Switches

RS Stock No.: 0180381



RS Professionally Approved Products bring to you professional quality parts across all product categories. Our product range has been tested by engineers and provides a comparable quality to the leading brands without paying a premium price.

Product Description

A robust reliable rocker switch featuring I/O marking actuator with a Single Pole Double Throw (SPDT) configuration and designed for an On-Off -On action. Constructed with a flame retardant and impact resistant Nylon 66 case and button for a rocker switch fit for industrial and commercial environment.

General Specifications

| | |
|-----------------------|---|
| Contact Configuration | Single Pole Double Throw(SPDT) |
| Switches Operation | On - Off - On |
| Mounting Type | Panel |
| Terminal Type | Quick or Solder Connect |
| Illuminated | No |
| Actuator Material | Polymer |
| Mechanical Life | 30000 Operations |
| Contact Material | Silver alloy |
| Electrical Life | 10,000 make and break cycles at full load |
| Housing | PA66 |
| Switch Support | PA66 |
| Terminals | 3,Copper or Brass |
| Applications | Household appliances and medical devices |

Electrical Specifications

| | |
|------------------------|---|
| Contact Current Rating | 6A 250V |
| Contact Resistance | <20m Ω (initial) |
| Insulation Resistance | >1000M Ω (500DC between open contacts) |
| Dielectric Strength | 1500V 1 minute |

Mechanical Specifications

| | |
|--|--|
| Panel Thickness For Panel Cut Out Size | 1: 0.7~1.25mm,2: 1.25~2.0mm, 3: 2.0~3.0mm |
| Panel Cut Out Width | 1: 12.9~13.1mm,2: 12.9~13.1mm,3: 12.9~13.1mm |
| Panel Cut Out Length | 1: 19.2~19.3mm,2: 19.3~19.4mm,3: 19.5~19.6mm |

Operation Environment Specifications

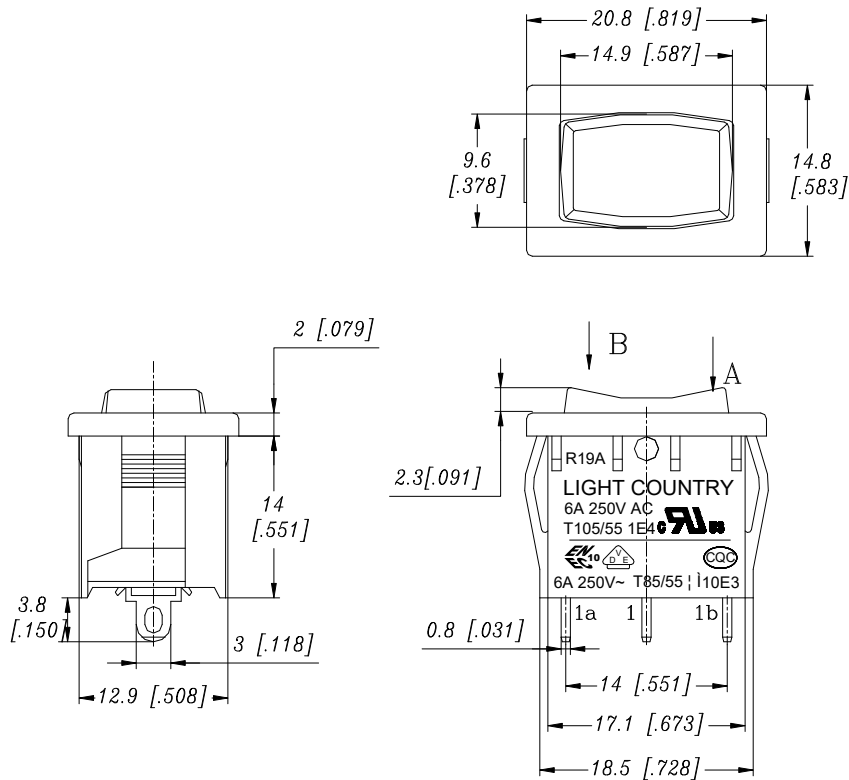
| | |
|-------------------------------|--------------|
| Operating Temperature Range | 0°C to 105°C |
| Minimum Operating Temperature | 0°C |
| Maximum Operating Temperature | 105°C |

Protection Category

| | |
|-----------|------|
| IP Rating | IP20 |
|-----------|------|

Approvals

| | |
|---------------------------|----------------------|
| Compliance/Certifications | UL / ENEC / VED/ CQC |
| Declarations | RoHS |



| Z | Y | X |
|----------|-----------|-----------|
| 0.7~1.25 | 12.9~13.1 | 19.2~19.3 |
| 1.25~2.0 | 12.9~13.1 | 19.3~19.4 |
| 2.0~3.0 | 12.9~13.1 | 19.5~19.6 |