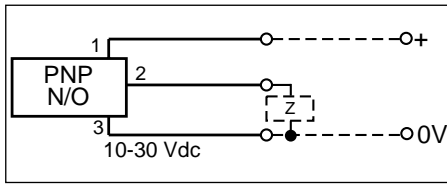




Level Switch

Instruction Leaflet

RS stock no. **285-778**



- 1 = Brown
- 2 = Black
- 3 = Blue
- Z = Load

The information provided in RS technical literature is believed to be accurate and reliable; however, RS Components assumes no responsibility for inaccuracies or omissions, or for the use of this information, and all use of such information shall be entirely at the user's own risk.
 No responsibility is assumed by RS Components for any infringements of patents or other rights of third parties which may result from its use.
 Specifications shown in RS Components technical literature are subject to change without notice.

RS Components, PO Box 99, Corby, Northants, NN17 9RS
 An Electrocomponents Company

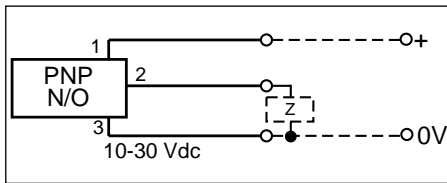
Telephone: 01536 201234
 © RS Components 1997



Level Switch

Instruction Leaflet

RS stock no. **285-778**



- 1 = Brown
- 2 = Black
- 3 = Blue
- Z = Load

The information provided in RS technical literature is believed to be accurate and reliable; however, RS Components assumes no responsibility for inaccuracies or omissions, or for the use of this information, and all use of such information shall be entirely at the user's own risk.
 No responsibility is assumed by RS Components for any infringements of patents or other rights of third parties which may result from its use.
 Specifications shown in RS Components technical literature are subject to change without notice.

RS Components, PO Box 99, Corby, Northants, NN17 9RS
 An Electrocomponents Company

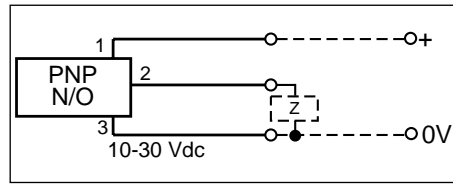
Telephone: 01536 201234
 © RS Components 1997



Level Switch

Instruction Leaflet

RS stock no. **285-778**



- 1 = Brown
- 2 = Black
- 3 = Blue
- Z = Load

The information provided in RS technical literature is believed to be accurate and reliable; however, RS Components assumes no responsibility for inaccuracies or omissions, or for the use of this information, and all use of such information shall be entirely at the user's own risk.
 No responsibility is assumed by RS Components for any infringements of patents or other rights of third parties which may result from its use.
 Specifications shown in RS Components technical literature are subject to change without notice.

RS Components, PO Box 99, Corby, Northants, NN17 9RS
 An Electrocomponents Company

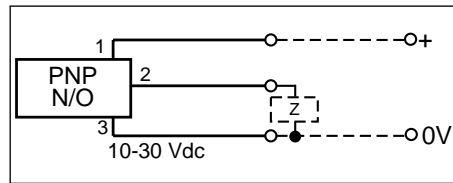
Telephone: 01536 201234
 © RS Components 1997



Level Switch

Instruction Leaflet

RS stock no. **285-778**



- 1 = Brown
- 2 = Black
- 3 = Blue
- Z = Load

The information provided in RS technical literature is believed to be accurate and reliable; however, RS Components assumes no responsibility for inaccuracies or omissions, or for the use of this information, and all use of such information shall be entirely at the user's own risk.
 No responsibility is assumed by RS Components for any infringements of patents or other rights of third parties which may result from its use.
 Specifications shown in RS Components technical literature are subject to change without notice.

RS Components, PO Box 99, Corby, Northants, NN17 9RS
 An Electrocomponents Company

Telephone: 01536 201234
 © RS Components 1997

