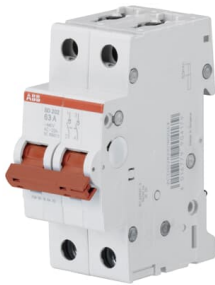




 PRODUCT-DETAILS

SD202/25

SD202/25 - Switch Disconnecter



General Information

| | |
|-----------------------|-----------------------------------|
| Extended Product Type | SD202/25 |
| Product ID | 2TAZ510200R0025 |
| EAN | 6957625364168 |
| Catalog Description | SD202/25 - Switch Disconnecter |
| Long Description | SD202/16 - Switch Disconnecter 2P |

ABB EcoSolutions

| | |
|---|---|
| ABB EcoSolutions | Yes |
| Recyclability Rate of the Product acc. to EN45555 | Design for Closing Resource Loops - Standard EN45555 - 92 % |
| ABB Site Meeting Group Waste To Landfill Target | No non-hazardous waste is sent to a landfill UL 2799 Zero Waste To Landfill Validation available |
| Sustainable Material Content in Packaging (wt. %) | Recycled Cardboard - 89.96 % Recycled Cardboard - 10.04 % |
| Extended Product Lifetime | Product Durability Product Modularity |
| End Of Life | 9AKK108470A4895 |

Disassembling Instructions

| | |
|--|-----------------|
| Environmental Product Declaration - EPD | 9AKK108470A5090 |
|--|-----------------|

Electrical

| | |
|--|-------|
| Rated Conditional Short- Circuit Current (I _{nc}) | 25 kA |
|--|-------|

Material Compliance

| | |
|---|--|
| RoHS Declaration | 2CDK440034D2703 |
| RoHS Information | Following EU Directive 2011/65/EU and Amendment 2015/863 July 22, 2019 |
| RoHS Date | 20210528 |
| Conflict Minerals Reporting Template (CMRT) | 9AKK108468A3363 |
| WEEE Category | Product Not in WEEE Scope |

Dimensions

| | |
|-------------------------------|----------|
| Product Net Width | 35 mm |
| Product Net Height | 88 mm |
| Product Net Depth / Length | 69 mm |
| Product Net Weight | 0.162 kg |

Ordering

| | |
|---------------------------------|-------------|
| Package Level 1 Units | box 6 piece |
| Package Level 1 Gross Weight | 1.027 kg |

Certificates and Declarations

| | |
|-----------------------------------|-----------------------|
| Declaration of Conformity - CE | No declaration needed |
|-----------------------------------|-----------------------|

Installation

| | |
|-----------------------------|--------------------|
| Instructions and Manuals | No document needed |
|-----------------------------|--------------------|

Popular Downloads

| | |
|--------------------------------------|-----------------|
| Data Sheet, Technical Information | 2CDC441015D0201 |
|--------------------------------------|-----------------|

External Classifications and Standards

| | |
|----------------------------|---|
| ETIM 9 | EC001545 - Main switch for distribution board |
| ETIM 10 | EC001545 - Main switch for distribution board |
| eClass | V11.0 : 27142301 |
| Object Classification Code | Q |

Accessories

| Identifier | Description | Type | Quantity | Unit Of Measure |
|-----------------|--|---------------|----------|-----------------|
| 2CDS200922R0001 | S2C-S/H6R Universal Auxiliary/Signal Con | S2C-S/H6R | 1 | piece |
| 2CDS200912R0001 | S2C-H6R Auxiliary Contact 1CO | S2C-H6R | 1 | piece |
| 2CDS200970R0002 | S2C-H10 Bottom-fitting auxiliary contact 1NO | S2C-H10 | 1 | piece |
| 2CDS200936R0001 | S2C-H11L Auxiliary Contact 1NO / 1NC, Left side mounting | S2C-H11L | 1 | piece |
| 2CDS200936R0002 | S2C-H20L Auxiliary Contact 2NO | S2C-H20L | 1 | piece |
| 2CDS200936R0003 | S2C-H02L Auxiliary Contact 2NC, Left side mounting | S2C-H02L | 1 | piece |
| 2CDS200946R0001 | S2C-H6-11R Auxiliary contact 1NO/1NC | S2C-H6-11R | 1 | piece |
| 2CDS200946R0002 | S2C-H6-20R Auxiliary contact 2NO | S2C-H6-20R | 1 | piece |
| 2CDS200946R0003 | S2C-H6-02R Auxiliary contact 2NC | S2C-H6-02R | 1 | piece |
| 2CSS200911R0001 | S2C-UA 12 DC Undervoltage release | S2C-UA 12 DC | 1 | piece |
| 2CSS200911R0002 | S2C-UA 24 AC Undervoltage release | S2C-UA 24 AC | 1 | piece |
| 2CSS200911R0003 | S2C-UA 48 AC Undervoltage release | S2C-UA 48 AC | 1 | piece |
| 2CSS200911R0004 | S2C-UA 110 AC Undervoltage release | S2C-UA 110 AC | 1 | piece |
| 2CSS200911R0005 | S2C-UA 230 AC Undervoltage release | S2C-UA 230 AC | 1 | piece |
| 2CSS200911R0006 | S2C-UA 400 AC Undervoltage release | S2C-UA 400 AC | 1 | piece |
| 2CSS200911R0007 | S2C-UA 24 DC Undervoltage release | S2C-UA 24 DC | 1 | piece |
| 2CSS200911R0008 | S2C-UA 48 DC Undervoltage release | S2C-UA 48 DC | 1 | piece |
| 2CSS200911R0009 | S2C-UA 110 DC Undervoltage release | S2C-UA 110 DC | 1 | piece |
| 2CSS200911R0010 | S2C-UA 230 DC Undervoltage release | S2C-UA 230 DC | 1 | piece |
| GHS2001901R0003 | S2C-DH Rotary operating mechanism | S2C-DH | 1 | piece |
| 2CSS200998R0001 | S2C-BP Mechanical tripping device | S2C-BP | 1 | piece |
| 2CSS200999R0001 | S2C-EST Plug-in base | S2C-EST | 1 | piece |
| 2CDS200918R0001 | S2C-Nt Hand operated neutral | S2C-NT | 1 | piece |
| 2CCA880100R0001 | CMS-100PS Sensor | CMS-100PS | 1 | piece |
| 2CCA880101R0001 | CMS-101PS Sensor | CMS-101PS | 1 | piece |
| 2CCA880102R0001 | CMS-102PS Sensor | CMS-102PS | 1 | piece |

Categories

Low Voltage Products and Systems → Modular DIN Rail Products → Command and Signalling Devices → Switch Disconnectors

