

Linear Double Ended ECO 118mm

DE 118MM ECO 240V 120W R7S SV1

0021714



Range features

- Xenon technology
- Sparkling light output
- Less CO2 emissions
- Less heat generation
- Transformer free operation
- Filament support method patented
- Average rated life 1000hrs or 2000hrs - 20% energy savings compared to standard halogen double ended lamps with same light output



PRODUCT OVERVIEW

| | |
|----------------------------|---------------------|
| Ordering number | 0021714 |
| Light colour | 829 Warm white |
| Technology | Halogen |
| Energy class | D |
| Average life (Rated) (h) | 2000 |
| Lamp finish | clear |
| Lamp shape | Linear |
| Dimmable | Yes |
| Cap/Base | R7s |
| Type | Linear Double Ended |
| EAN code | 5410288217147 |
| CRI (Ra) | 100 |
| Beam angle(°) | na |
| Colour temperature (K) | 2950 |
| Luminous flux (Rated) (lm) | 2250 |
| Watt (Nominal) (W) | 120 |
| Voltage (V) | 240 |

Linear Double Ended ECO 118mm

DE 118MM ECO 240V 120W R7S SV1

0021714

DATA TABLE

General data

| | |
|---|---|
| Ordering number | 0021714 |
| Technology | Halogen |
| Average life (Nominal) (h) | 2000 |
| Average life (Rated) (h) | 2000 |
| Energy saving lamp | No |
| Energy class | D |
| Lamp shape | Linear |
| Lamp finish | clear |
| Dimmable | Yes |
| Cap/Base | R7s |
| Type | Linear Double Ended |
| EAN code | 5410288217147 |
| E-number SE | 8355618 |
| E-number FI | 4740101 |
| Long description | Xenon technology. Sparkling light output. Less CO2 emissions. Less heat generation. Transformer free operation. Filament support method patented. Average rated life 1000hrs or 2000hrs - 20% energy savings compared to standard halogen double ended lamps with same light output |
| Product name | DE 118MM ECO 240V 120W R7S SV1 |
| Lamp mercury content (mg) | 0 |
| Starting time (max) (s) | 0.01 |
| Warm-up time to 60% of full light (max) (s) | Instant full light |
| Control gear required | No |
| Fixture rating | Enclosed |
| IEC Reference | IEC 60357 |
| IEC Reference 2 | IEC 60432-3 |
| Intended purpose | General lighting |
| No. of switching cycles before premature failure (min) | > 8000 |
| Special purpose lamp | No |
| Transformer required | No |
| Sales pack quantity | 10 |
| Optimal operating condition (°C) | 25 |

Linear Double Ended ECO 118mm

DE 118MM ECO 240V 120W R7S SV1

0021714

Optical data

| | |
|--|----------------|
| Light colour | 829 Warm white |
| CRI (Ra) | 100 |
| Suitable for accent lighting | No |
| Beam angle(°) | na |
| Colour temperature (K) | 2950 |
| Luminous flux (Rated) (lm) | 2250 |
| Lumen maintenance at end of nominal life (%) | 80 |
| Luminous flux (Nominal) (lm) | 2250 |

Electrical data

| | |
|---------------------------------|-----|
| kWh per 1000 hours burning time | 120 |
| Watt (Rated) (W) | 120 |
| Watt (Nominal) (W) | 120 |
| Voltage (V) | 240 |
| Lamp power factor | 1 |

Physical data

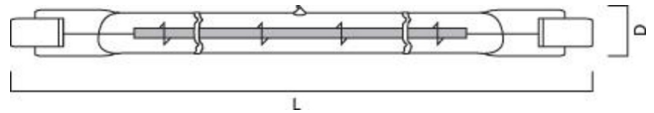
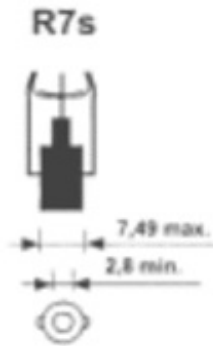
| | |
|--|-----------------------|
| Weight (kg) | 0.01 |
| Lamp Length (mm) - C/L | 119.6 |
| Max. Lamp Diameter (mm) - D | 12 |
| Single packaging type | Box/Sleeve |
| Single package dimensions (L x W x H) (cm) | 16.50 x 2.50 x 2.90 |
| Inner package dimensions (L x W x H) (cm) | 17.00 x 13.00 x 6.50 |
| Inner package net weight (kg) | 0.08 |
| Outer package dimensions (L x W x H) (cm) | 37.50 x 28.50 x 19.50 |

Linear Double Ended ECO 118mm

DE 118MM ECO 240V 120W R7S SV1

0021714

TECHNICAL DRAWINGS



ENERGY LABEL

