

PST 1,3/12-5,0

Order No.: 1933286

The figure shows a 10-position version of the product



Header, Nominal current: 12 A, Rated voltage (III/2): 320 V, Number of positions: 12, Pitch: 5 mm, Color: Black, Contact surface: Tin, Assembly: Soldering, Voltage and current depend on the plug-in terminal block used. The value of the weaker component is always valid. Over 16 pos. upon request. The pin strip is made of highly temperature resistant plastic and is thus suitable for the reflow process.

Commercial data

EAN	 4 017918 918774
Pack	50
Customs tariff	85366990
Gross weight in pieces	1.99 g
Country of Origin	DE
Catalog page information	Page 538 (CC-2011)

Product notes

WEEE/RoHS-compliant since:
01/01/2003



Please note that the data given here has been taken from the online catalog. For comprehensive information and data, please refer to the user documentation at <http://www.download.phoenixcontact.com>. The General Terms and Conditions of Use apply to Internet downloads.

Technical data

Dimensions / positions

Length	2.8 mm
Pitch	5 mm

Dimension a	55 mm
Number of positions	12
Pin dimensions	1,3 mm
Hole diameter	1.5 mm

Technical data

Range of articles	PST 1,3/..-V
Insulating material group	IIIa
Rated surge voltage (III/3)	4 kV
Rated surge voltage (III/2)	4 kV
Rated surge voltage (II/2)	4 kV
Rated voltage (III/2)	320 V
Rated voltage (II/2)	400 V
Connection in acc. with standard	EN-VDE
Nominal current I_N	12 A (depends on the plug used)
Nominal voltage U_N	250 V
Maximum load current	12 A (depends on the plug used)
Insulating material	PA
Inflammability class according to UL 94	V0
Color	Black
Nominal voltage, UL/CUL Use Group B	300 V
Nominal current, UL/CUL Use Group B	16 A
Nominal voltage, UL/CUL Use Group D	300 V
Nominal current, UL/CUL Use Group D	10 A

Certificates



Certification

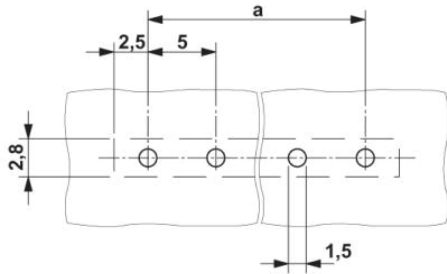
CSA, cULus Recognized, GOST, SEV, CCA

Certifications applied for:

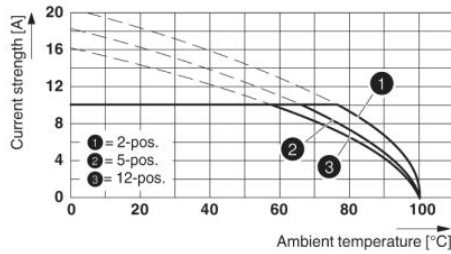
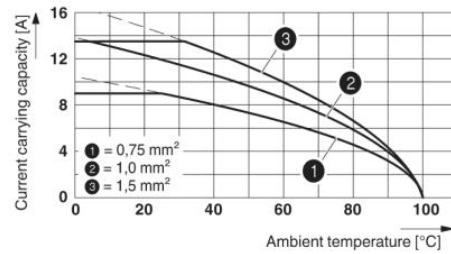
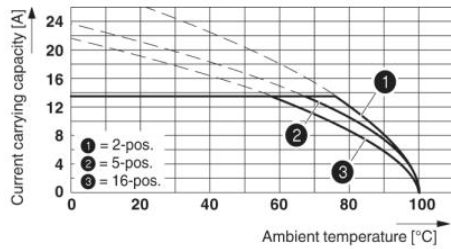
Certification Ex:

Drawings

Drilling plan/solder pad geometry

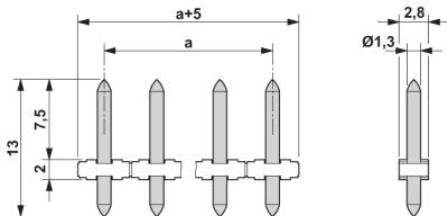


Diagram



Type: PTS 1,5/...-PH-5,0 with PST 1,3/...-5,0

Dimensioned drawing



Address

PHOENIX CONTACT Ltd
Halesfield 13
Telford / Shropshire / TF7 4PG,England
Phone 01952 681 700
Fax 01952 681 799
<http://www.phoenixcontact.co.uk>



Phoenix Contact Ltd.
Technical modifications reserved;