



ENGLISH

Datasheet

# RS Pro Uninsulated Tin Plated Crimp Ring Terminal

RS Stock No: 433-034



## Specifications:

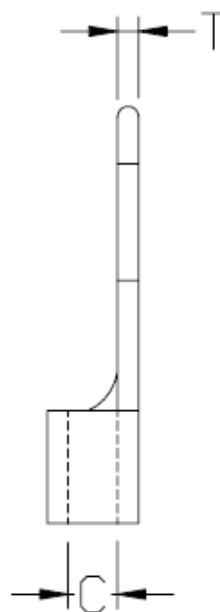
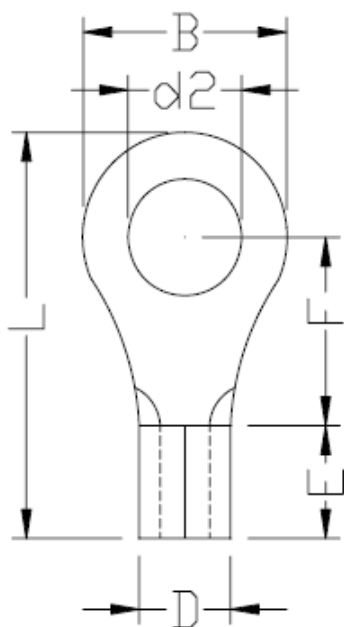
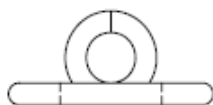
Material: Copper

Stud Size: #4

Wire Range: 22-16AWG

Voltage and Temp: 600V max., 400°C

Plating: Tin



Dimension B = 5.5mm +/- 0.3
Dimension C = 1.8mm +/- 0.3
Dimension D = 3.45mm +/- 0.3
Dimension d2 = 3.2mm +/- 0.15
Dimension E = 5.5mm +/- 0.3
Dimension F = 3.5mm +/- 0.3
Dimension L = 12.0mm +/- 1.0
Dimension T = 0.8mm +/- 0.03