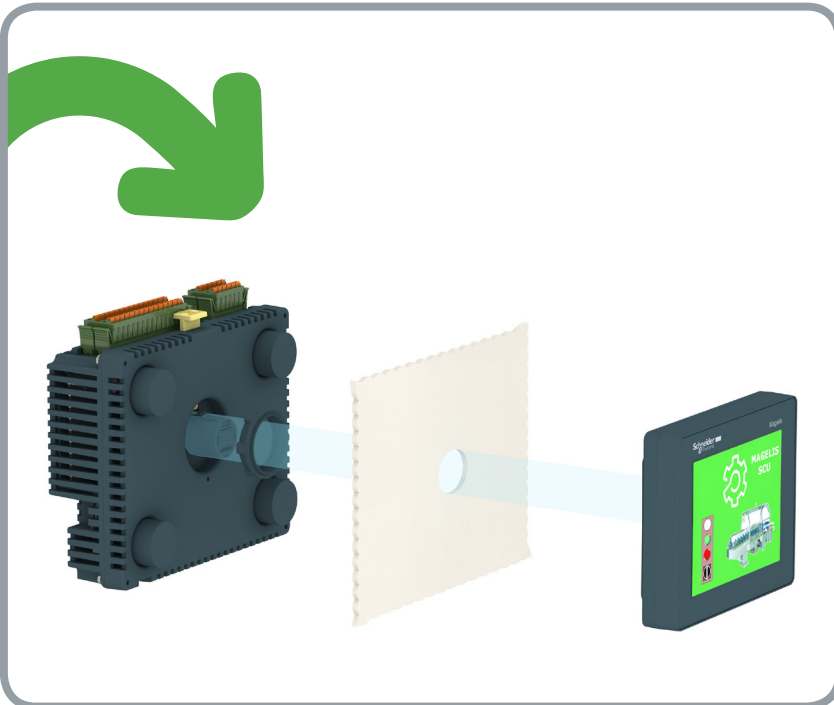




# Promotional offer

Get started with Magelis HMISCU



Our Magelis SCU is a modular HMI controller that delivers adequate functionality for control of small machines and simple processes, saving up to 30% in installation and ownership costs throughout the machine's life cycle.

It substantially reduces wiring and costs when compared to solutions with a separate PLC and HMI and embeds all the key functions in one modular solution without any additional costs.

## Features

- > Digital I/O, including HSC, PTO/PWM, and analog I/O, including temperature inputs
- > Communication via USB (linking to tower lights and illuminated switches), serial, Ethernet, and CANopen
- > Crystal-clear display to be more user-friendly for nice viewing and for accurate control even with gloves

## Easy installation:

- > **Cut-out free:** for quick installation of display module - as easy as a simple pushbutton
- > **Quick:** The controller module is mounted directly in a 22mm diameter hole, or snapped on a DIN rail via an ingenious remote cable (3m or 5m)
- > **Screwdriver-free:** for easy I/O connection on removable terminal block built in with spring clamps resistant to vibration.

To help equip you to quickly make a significant difference to your automated control systems, we offer promotional starter packages that include:

- > Initial set-up and consultation training session. Discuss your application requirements with one of our technical specialists
- > Magelis HMISCU, choice of 3.5" or 5.7" touchscreen
- > SoMachine configuration software

## Package options

Offer limited to one package per customer.

Pack Reference	3.5" Touchscreen	5.7" Touchscreen	SoMachine
HMIGBPACSCU6	<input checked="" type="checkbox"/>		<input checked="" type="checkbox"/>
HMIGBPACSCU8		<input checked="" type="checkbox"/>	<input checked="" type="checkbox"/>

RS Stock No. 887-4755

## Specification

### HMISCU starter kit with training offer

Item	Part No.	Description
HMISCU (selection according to package)		
HMI Controller	HMISCU6A5 <b>RS 815-2455</b>	24V 3.5" HMI Controller with 16 Digital Input/10 Digital Output for Simple Machines
HMI Controller	HMISCU8A5 <b>RS 815-2468</b>	24V 5.7" HMI Controller with 16 Digital Input/10 Digital Output for Simple Machines
<b>Other</b>		
PSU	ABL8MEM24012	24V Phaseo Power Supply
Controller Software	SOMNACS41	SoMachine V4.1 DVD + License
Accessories	BMXXCAUSBH018	USB PC or terminal connecting cable



For more information please visit [www.schneider-electric.com/uk](http://www.schneider-electric.com/uk) or call 0870 608 8 608