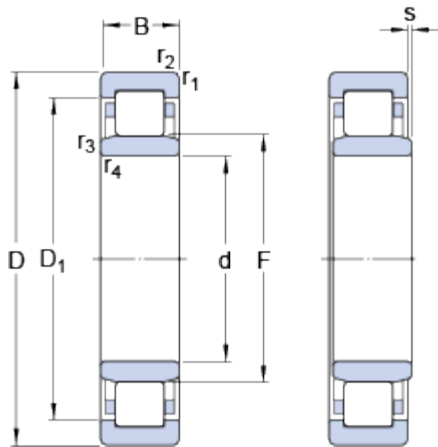


# NU 312 ECJ

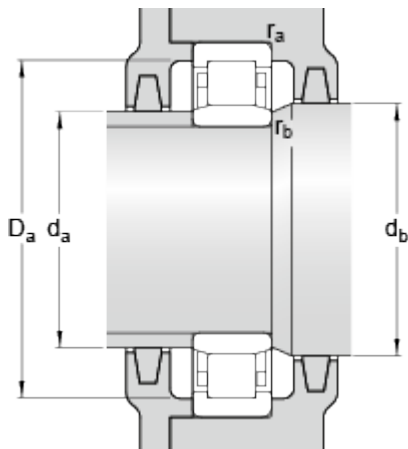
Popular item  
SKF Explorer

## Dimensions



d	60	mm
D	130	mm
B	31	mm
D <sub>1</sub>	≈ 108.6	mm
F	77	mm
r <sub>1,2</sub>	min. 2.1	mm
r <sub>3,4</sub>	min. 2.1	mm
s	max. 2.1	mm

## Abutment dimensions



d <sub>a</sub>	min. 72	mm
d <sub>a</sub>	max. 74	mm
d <sub>b</sub>	min. 79	mm
D <sub>a</sub>	max. 118.1	mm
r <sub>a</sub>	max. 2	mm
r <sub>b</sub>	max. 2	mm

## Calculation data

Basic dynamic load rating	C	173	kN
Basic static load rating	C <sub>0</sub>	160	kN
Fatigue load limit	P <sub>u</sub>	21.2	kN
Reference speed		5600	r/min
Limiting speed		6700	r/min
Calculation factor	k <sub>r</sub>	0.15	
Limiting value	e	0.2	
Axial load factor	Y	0.6	

## Mass

Mass bearing		1.76	kg
--------------	--	------	----

## Associated products

