

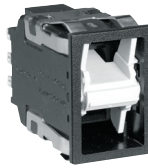
MICRO SWITCH™ Pushbutton and Rocker Switches — AML Series



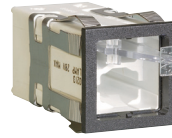
Button



Pushbutton Body



Rocker



Indicator



Switch Guard

The AML Series is designed to achieve a balance between human factors and appearance. Available in many shapes, sizes, configurations and colors to enhance manual operation with a flexible and attractive interface.

Features

- ▶ Pushbuttons for High to Intermediate Operation Frequency
- ▶ Rocker Switches for Less Frequent Operations
- ▶ Lighted Indicators to Complement the Switches

- ▶ Single Level Termination for Ease of Wiring
- ▶ Easy-to-Relamp from the Front of the Panel without Tools

Specifications

- ▶ UL Recognized
- ▶ CSA Certified

Pushbutton Switches

You must order a button, below, to create a complete switch.

Stock No.	Mfr.'s Type	Description	Terminals	Circuitry	Lighting Option	Button/Lens Style	Voltage Max.		Current Max.		EACH			
							VAC	VDC	ACA	DCA	1-9	10-49	50-99	100+
70120506	AML21BBA2AA	Mom. Act., Square, Non-Lit	QC/Solder	SPDT	—	AML 51	250	30	2.0	2.0	11.55	10.62	9.81	9.12
70119086	AML21CBA2AA	Mom. Act., Square, 1 Lamp Circuit	QC/Solder	SPDT	Lamp*	AML 51	250	24	3.0	2.0	13.86	12.72	11.76	10.93
70119087	AML21CBA2AB	Alt. Act., Square, 1 Lamp Circuit	QC/Solder	SPDT	Lamp*	AML 51	250	24	3.0	2.0	16.03	14.71	13.60	12.64
70119088	AML21CBA2AC	Mom. Act., Square, 1 Lamp Circuit	QC/Solder	DPDT	Lamp*	AML 51	250	24	3.0	2.0	18.31	16.80	15.53	14.44
70119089	AML21CBA2AD	Alt. Act., Square, 1 Lamp Circuit	QC/Solder	DPDT	Lamp*	AML 51	250	24	3.0	2.0	19.78	18.16	16.78	15.60
70119090	AML21CBA3AC	Mom. Act., Square, 1 Lamp Circuit	PCB	DPDT	Lamp*	AML 51	250	24	3.0	2.0	20.00	18.36	16.97	15.77
70119091	AML21EBA2AA	Mom. Act., Rectangular, Non-Lit	QC/Solder	SPDT	—	AML 51	250	24	3.0	2.0	14.26	13.09	12.12	11.26
70118531	AML21FBA2AA	Mom. Act., Rectangular, 1 Lamp Circuit	QC/Solder	SPDT	Lamp*	AML 51	250	24	3.0	2.0	16.90	15.52	14.35	13.33
70119092	AML21FBA2AC	Mom. Act., Rectangular, 1 Lamp Circuit	QC/Solder	DPDT	Lamp*	AML 51	250	24	3.0	2.0	19.58	17.97	16.61	15.44
70119093	AML21GBA2AA	Mom. Act., Rectangular, 2 Lamp Circuits	QC/Solder	SPDT	Lamp*	AML 51	250	24	3.0	2.0	21.04	19.31	17.85	16.59
70119094	AML21GBA2AD	Alt. Act., Rectangular, 2 Lamp Circuits	QC/Solder	DPDT	Lamp*	AML 51	250	24	3.0	2.0	27.25	25.02	23.12	21.49
70119102	AML31EBA4AD	Mom. Act., Rectangular, Non-Lit	QC/Solder	SPDT-DB	—	AML 51	250	24	10.0	—	27.71	25.44	23.51	21.86
70119101	AML31EBA4AC	Alt. Act., Rectangular, Non-Lit	QC/Solder	SPDT-DB	—	AML 51	250	24	10.0	—	28.40	26.07	24.09	22.40
70119100	AML31FBA4AD	Mom. Act., Rectangular, 1 Lamp Circuit	QC/Solder	SPDT-DB	Lamp*	AML 51	250	24	10.0	—	29.67	27.24	25.17	23.40
70119099	AML31FBA4AC	Alt. Act., Rectangular, 1 Lamp Circuit	QC/Solder	SPDT-DB	Lamp*	AML 51	250	24	10.0	—	26.01	23.87	22.06	20.51
70120061	AML32FBB4AD	Alt. Act., Rectangular, Isolated Neon Lamp Circuit, Red	QC/Solder	SPDT-DB	125 V Neon	AML 52-N	250	24	10.0	—	35.13	32.25	29.81	27.71
70119095	AML32FBB7AD	Alt. Act., Rectangular, Integral Neon Lamp Circuit, Red	QC/Solder	SPDT-DB	125 V Neon	AML 52-N	125	24	10.0	—	33.40	30.68	28.36	26.36
70118496	AML21BBA2AB	Alt. Act., Square, Non-Lit	QC/Solder	SPDT	—	AML 51	250	24	2.0	2.0	14.33	13.16	12.16	11.31
70118497	AML21BBA2AC	Mom. Act., Square, Non-Lit	QC/Solder	DPDT	—	AML 51	250	24	2.0	2.0	16.08	14.76	13.66	12.70
70118498	AML21CBE2AC	Mom. Act., Square, 1-Lamp Ckt.	QC/Solder	DPDT	28 V Lamp	AML 51	250	24	2.0	2.0	23.28	21.37	19.75	18.35
70118558	AML21BBA2BA	Mom. Act., Square, Non-Lit	QC/Solder	SPDT	—	AML 51	125	125	0.1	0.1	13.64	12.52	11.58	10.76
70118921	AML21BBA2BC	Mom. Act., Square, Non-Lit	QC/Solder	SPDT	—	AML 51	125	125	0.1	0.1	35.87	32.93	30.43	28.29
70118922	AML21BBA2EC	Mom. Act., Square, Non-Lit	QC/Solder	DPDT	—	AML 51	250	24	2.0	2.0	29.93	—	—	—
70118926	AML21EBA2AC	Mom. Act., Rect., Non-Lit	QC/Solder	DPDT	—	AML 51	250	24	2.0	2.0	19.56	17.96	16.60	15.43
70118927	AML21EBA2AD	Alt. Act., Rect., Non-Lit	QC/Solder	DPDT	—	AML 51	250	24	2.0	2.0	20.02	18.38	16.98	15.79
70118928	AML21FBA2AD	Alt. Act., Rect., 1-Lamp Ckt.	QC/Solder	DPDT	Lamp*	AML 51	250	24	2.0	2.0	38.23	35.10	32.44	30.15
70118929	AML21GBE2AD	Alt. Act., Rect., 2-Lamp Ckt.	QC/Solder	DPDT	28 V Lamp	AML 51	250	24	2.0	2.0	72.50	69.38	66.53	62.29
70118930	AML21JBA2AC	Full Guard Bezel, Mom. Act., Square, 1-Lamp Ckt.	QC/Solder	DPDT	Lamp*	AML 51	250	24	2.0	2.0	37.39	34.32	31.73	29.49

*Not Included.

Rocker Switches

You must order a switch cover, below, to create a complete switch.

70120060	AML24EBA2BC01	2-Position, Maint./Maint., Gold Contacts, Non-Lit	QC/Solder	DPDT	—	AML 54	125	125	0.1	0.1	25.66	23.56	21.78	20.24
70118536	AML24EBA2AA01	2-Position, Maint./Maint., Silver Contacts, Non-Lit	QC/Solder	SPST	—	AML 54	250	24	3.0	2.0	18.41	16.91	15.62	14.52
70118537	AML24EBA2AA06	3-Position, Maint./Maint./Mom., Silver Contacts, Non-Lit	QC/Solder	SPDT	—	AML 54	250	24	3.0	2.0	18.41	16.91	15.62	14.52
70119096	AML34EBA4AC01	2-Position, Maint./Maint., Non-Lit	QC/Solder	DPST	—	AML 54	250	—	15.0	2.0	29.94	27.49	25.41	23.62
70118931	AML24EBA2AA04	3 Pos. Maint./Maint./Maint., Rect., Non-Lit	QC/Solder	SPDT	—	AML 54	250	24	2.0	2.0	18.41	16.91	15.62	14.52
70118932	AML24EBA2AA05	3 Pos. Mom./Maint./Mom., Rect., Non-Lit	QC/Solder	SPDT	—	AML 54	250	24	2.0	2.0	18.41	16.91	15.62	14.52
70118933	AML24EBA2AC04	3 Pos. Maint./Maint./Maint., Rect., Non-Lit	QC/Solder	DPDT	—	AML 54	250	24	2.0	2.0	23.35	21.43	19.81	18.43
70118934	AML24EBA2BA05	3 Pos. Mom./Maint./Mom., Rect., Non-Lit	QC/Solder	SPDT	—	AML 54	125	125	0.1	0.1	19.51	17.91	16.56	15.39
70118935	AML24EBA2CA04	3 Pos. Maint./Maint./Maint., Rect., Non-Lit	QC/Solder	DPDT	—	AML 54	250	24	2.0	2.0	31.95	29.33	27.11	25.20

Indicators

You must order a switch cover, below, to create a complete indicator.

70119103	AML41CBA2	Square, 1 Lamp Circuit	QC/Solder	—	Lamp*	AML 51	—	—	—	—	10.95	10.05	9.29	8.63
70120064	AML41FBA2	Rectangular, 1 Lamp Circuit	QC/Solder	—	Lamp*	AML 51	—	—	—	—	11.84	10.87	10.05	9.34
70120065	AML41GBA2	Rectangular, 2 Lamp Circuits	QC/Solder	—	Lamp*	AML 51	—	—	—	—	15.12	13.88	12.82	11.92

*Not Included.

Buttons, Lenses and Covers

Required for a complete switch or indicator, listed above.

Stock No.	Mfr.'s Type	Description	EACH			
			1-9	10-49	50-99	100+
70120066	AML51-A10R	Button, Square, Red, 0.32" High	3.35	3.08	2.85	2.65
70120067	AML51-C10R	Button, Square, Red, 0.19" High	1.11	1.02	.94	.88
70120264	AML51-C10W	Button, Square, White, 0.19" High	1.05	.96	.88	.83
70120068	AML51-C11W	Button, Square, Clear Cap, White Insert, 0.19" High	2.70	2.47	2.29	2.13
70120069	AML51-F10R	Button, Rectangular, Red, 0.19" High	1.78	1.64	1.51	1.41
70120496	AML52-N10R	Button for Neon Lamp, Red, 0.19" High	1.99	1.82	1.68	1.57
70118501	AML51-F10G	Button, Rectangular, Green, 0.19" High	1.88	1.72	1.59	1.48
70118540	AML51-C10G	Button, Square, Green, 0.19" High	1.20	1.09	1.00	.93
70118541	AML51-C10Y	Button, Square, Yellow, 0.19" High	1.20	1.09	1.00	.93
70118542	AML51-F10Y	Button, Rectangular, Yellow, 0.19" High	1.99	1.82	1.68	1.57
70118502	AML51-F10W	Button, Rect., White, 0.19" High	1.88	1.72	1.59	1.48
70118503	AML52-C10R	Button, Square, Red, 0.19" High	1.33	1.22	1.12	1.04
70118539	AML51-C10A	Button, Square, Amber, 0.19" High	1.28	1.17	1.09	1.01
70118559	AML52-C10W	Button, Square, White, 0.19" High	1.33	1.22	1.12	1.04
70118572	AML51-C10B	Button, Square, Blue, 0.19" High	1.33	1.22	1.12	1.04
70118574	AML52-C10G	Button, Square, Green, 0.19" High	1.40	1.30	1.19	1.11
70118575	AML52-C10Y	Button, Square, Yellow, 0.19" High	1.28	1.17	1.09	1.01
70118710	AML51-C10K	Button, Square, Black, 0.19" High	1.31	1.21	1.12	1.04
70118713	AML52-C10K	Button, Square, Black, 0.19" High	1.33	1.22	1.12	1.04

Buttons, Lenses and Covers (Continued)

Required for a complete switch or indicator, listed above.

Stock No.	Mfr.'s Type	Description	EACH			
			1-9	10-49	50-99	100+
70120070	AML54-F10R	Rocker Cover, Red	2.33	2.14	1.97	1.83
70120497	AML54-F10W	Rocker Cover, White	2.11	1.92	1.78	1.65
70120504	AML54-F10G	Rocker Cover, Green	2.51	2.31	2.13	1.98

Accessories

Optional devices to accent or protect the switches and indicators, or incandescent lamps that can be used in the switches and indicators, listed above.

Stock No.	Mfr.'s Type	Description	EACH
70120071	AML715EB	Switch Barrier, End, Short	1.57
70120072	AML75ABC	Panel Seal, Square, 0.19" High Pushbuttons	5.87
70119104	AML75BBC	Panel Seal, Rectangular, 0.19" High Pushbuttons	5.48
70119105	AML76C10T01P	Switch Guard, Square, 0.19" High Pushbuttons	8.03
70119106	AML76F10T01P	Switch Guard, Rectangular, 0.19" High Pushbuttons	8.69
70119097	AML91LA73	Incandescent Lamp, Industry No. 73	2.40
70119098	AML91LA85	Incandescent Lamp, Industry No. 85	2.40