

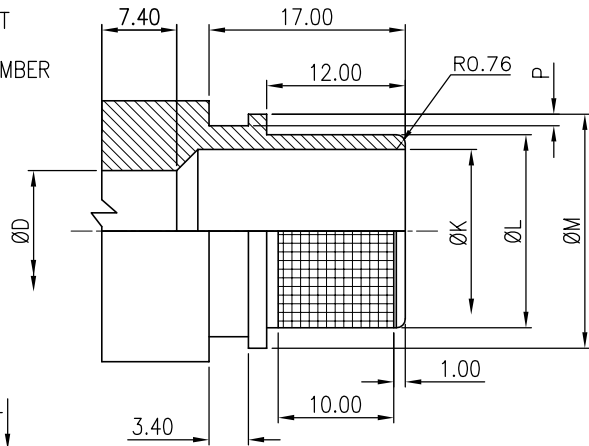
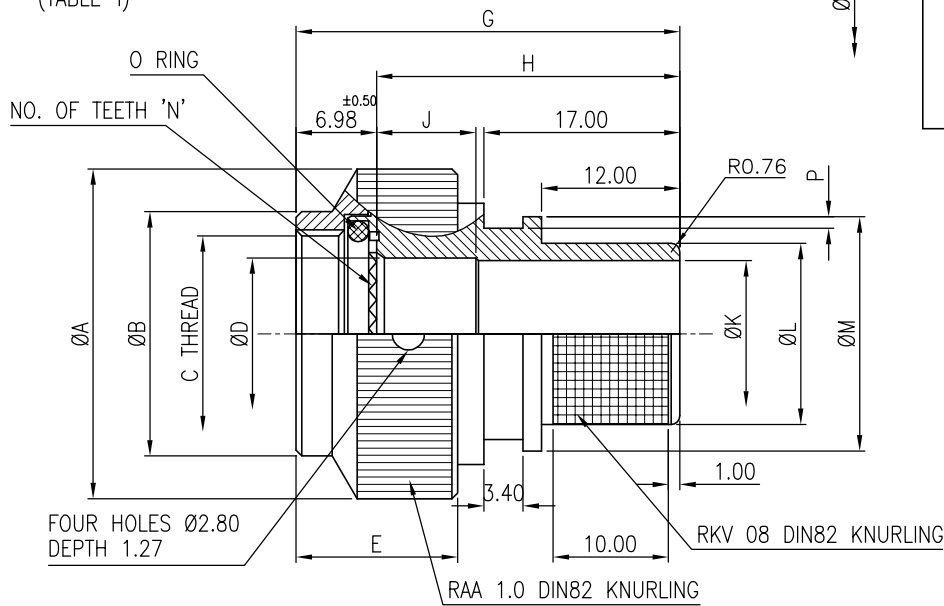
Issue No.	Eng. Ref. No.	REVISIONS	Date	App. By
02	--	STYLE-2 ADDED	12.06.15	SPK
03	B211	PART NUMBER MODIFIED	17.07.15	SPK

PART NUMBER

BL041 S S L 10 03 10 X S

PART NO PREFIX
 ANGLE PROFILE
 S-STRAIGHT
 COUPLING
 S-SELF LOCK
 CONNECTOR GROUP
 L-MIL-DTL-38999 SERIES III & IV
 SHELL SIZE
 (TABLE-I)

MATERIAL & FINISH
 STAINLESS STEEL PASSIVATED
 X- PART NO. CONSTANT
 CODE OF CABLING CHAMBER
 (TABLE-III)
 ENTRY SIZE
 (TABLE-II)



STYLE-2

TABLE-III

LENGTH CODE	G MAX	H MAX	J
10	34.6	26.3	7.40
15	42.6	34.3	15.40
20	47.6	39.3	20.40
25	57.6	49.3	30.40

S-STRAIGHT

TABLE-I

SIZE	C THREAD	ØA MAX	ØB MAX	ØD +0.00 -0.25	E MAX	N NUMBER OF TEETH
08	M12 X 1.0-6H	23.00	15.24	6.70	16.76	12
10	M15 X 1.0-6H	26.00	18.21	9.65	16.76	16
12	M18 X 1.0-6H	29.39	21.18	12.55	16.76	20
14	M22 X 1.0-6H	32.49	25.14	15.75	16.76	24
16	M25 X 1.0-6H	35.71	28.12	18.95	16.76	28
18	M28 X 1.0-6H	38.50	31.09	21.15	16.76	32
20	M31 X 1.0-6H	41.70	34.06	24.35	16.76	36
22	M34 X 1.0-6H	44.91	36.90	27.45	16.76	40
24	M37 X 1.0-6H	47.98	39.88	30.65	16.76	44

TABLE-II

ENTRY SIZE	K	L ±0.1	M ±0.3	P MIN
03	4.7	7.7	12.2	1.12
04	6.4	9.4	14.0	1.12
05	7.9	11.0	15.5	1.12
06	9.5	12.6	17.1	1.12
07	11.1	14.1	18.7	1.12
08	12.7	15.7	20.3	1.12
10	15.9	18.9	23.5	1.12
12	19.1	22.0	26.7	1.12
14	22.2	25.2	29.8	1.75
16	25.5	28.4	33.0	1.75
18	28.6	31.5	36.2	1.75
20	31.8	34.7	39.4	1.75

GENERAL TOLERANCE: ±0.3

<p>Amphenol AIPL</p>		TITLE		BAND LOCK ADAPTER			
		Name		Dwg. No.		All Dimensions are in	
Date		Dwg. Size		PSTDBS596		MM/INCHES	
Checked by		A4		Doc. No.: QF-DEV-76		SCALE:- NTS	
App. by		REV. NO. : 02		Sheet 1 OF 1		STANDARD	