



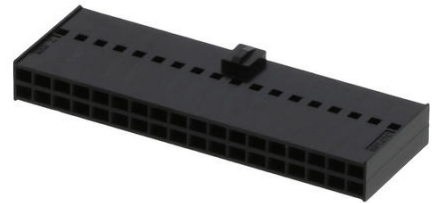
**Part Number :** [901420036](#)

**Product Description :** 2.54mm Pitch C-Grid III Crimp Housing Dual Row, 36 Circuits, Black

**Series Number :** 90142

**Status :** Active

**Product Category :** Connector Housings



---

## Documents & Resources

### Drawings

[901420036\\_sd.pdf](#)

### 3D Models and Design Files

[STEP AP242](#)

[SOLIDWORKS](#)

[Creo](#)


### Specifications

[PS-99020-0001-001.pdf](#)

---

## Product Environment Compliance

### Compliance

GADSL/IMDS	Not Relevant
China RoHS	 per SJ/T 11365-2006
EU ELV	Not Relevant
Low-Halogen Status	Low-Halogen per IEC 61249-2-21
REACH SVHC	Not Contained per ED/71/2019 (16 July 2019)
EU RoHS	Compliant per EU 2015/863

### [Compliance Statements](#)

- EU RoHS
- REACH SVHC
- Low-Halogen

### [Industry Documents](#)

- IPC 1752A Class C
- IPC 1752A Class D
- Molex Product Compliance Declaration
- IEC-62474
- chemSHERPA (xml)

Substances of Interest

- PFAS

EU RoHS Certificate of Compliance

Additional Product Compliance Information

---

**Part Details**

**General**

Status	Active
Category	Connector Housings
Series	90142
Description	2.54mm Pitch C-Grid III Crimp Housing Dual Row, 36 Circuits, Black
Application	Signal
Product Name	C-Grid III
UPC	800753656642

**Agency**

CSA	LR19980
UL	E29179

**Physical**

Breakaway	No
Circuits (maximum)	36
Color - Resin	Black
Gender	Receptacle
Glow-Wire Capable	No
Keying to Mating Part	None
Lock to Mating Part	Yes
Material - Resin	PPO
Net Weight	2.448/g

Number of Rows	2
Packaging Type	Bag
Panel Mount	No
Pitch - Mating Interface	2.54mm
Pitch - Termination Interface	2.54mm
Polarized to Mating Part	Yes
Ports	0
Stackable	No
Temperature Range - Operating	-55° to +105°C

---

## Mates With / Use With

### Mates with Part(s)

Description	Part Number
C-Grid III Right-Angle Dual Row Headers	<u>90122</u>
C-Grid III Dual Row Headers	<u>90130</u>
C-Grid III Vertical Dual Row Headers	<u>90131</u>

### Use with Part(s)

Description	Part Number
Pre-Crimped Lead C-Grid III Female-to-C-Grid III Female, Tin (Sn) Plating, 150.00mm Length, 22 AWG, Black	<u>797582022</u>
Pre-Crimped Lead C-Grid III Female-to-C-Grid III Female, Tin (Sn) Plating, 300.00mm Length, 22 AWG, Black	<u>797582023</u>
C-Grid III Female Crimp Terminals	<u>90119</u>