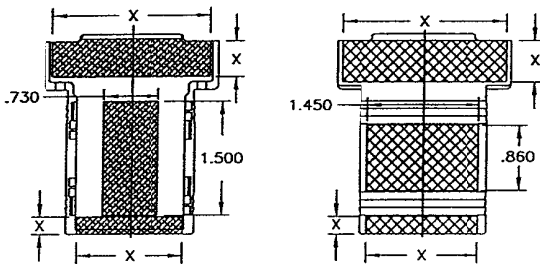
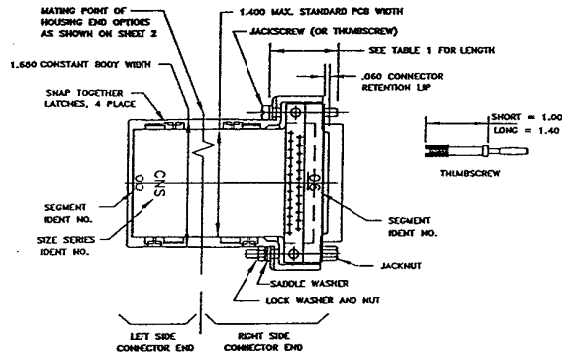


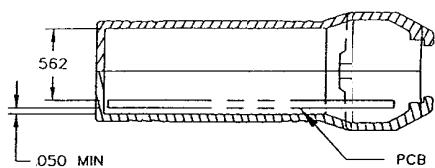
SAMPLE PART IDENT. CNS-0006



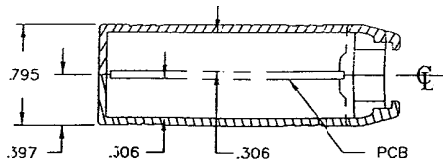
INSIDE INSERT

OUTSIDE INSERT

X DIMENSIONS ARE BASED ON SPECIFIC END OPTIONS



TYPE A



TYPE B

PCB MOUNTING POSITIONS

(BASED ON .063 THICK CIRCUIT BOARD)

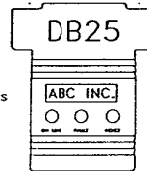
END OPTIONS ↓	TABLE 1 CNS CONNECTOR/MICRO-ELECTRONICS HOUSING SERIES INFORMATION									
	CONNECTOR/END TYPE	PCB MTG POS TYPE	HARDWARE REQUIREMENTS (QTY 2) PER SELECTED END OPTION							
			FOR ATTACHMENT TO A CAPTIVE CONN				FOR ATTACHING CABLES TO HOUSING			
		JACKSCREW 72609 (SEE BELOW)	SHT THUMBSCR 73542 (SEE BELOW)	LG THUMBSCR 73542 (SEE BELOW)	SADDLE WASHER	SADDLE WASHER	JACKNUT 72595 (SEE BELOW)	4-40 x .188 HEX NUT & #4 LK WSHF		
-0C	BLANK END	N/A								
-01	DB9 (STRAIGHT PIN CONNECTOR)	B								
-02	DB15 (STRAIGHT PIN CONNECTOR)	B								
-03	DB25 (STRAIGHT PIN CONNECTOR)	B	-01 (.57 LG)	-01 (.57 LG)	-04 (.57 LG)	YES	YES	-01 (.57 LG)		YES
-04	DB9 (RIGHT ANGLE PCB MTG EARS)	A								
-05	DB15 (RIGHT ANGLE PCB MTG EARS)	A								
-06	DB25 (RIGHT ANGLE PCB MTG EARS)	A	-02 (.85 LG)	-02 (.85 LG)	-05 (.85 LG)	YES	YES	-02 (.84 LG)		YES
-07	RJ11/RJ45 (RIGHT ANGLE PACTEC COMPONENTS)	A								
-08	36 PIN CENTRONICS COMPAT (FLAT LEAD FOR SMT)	B								
-09	36 PIN CENTRONICS COMPAT (R/A PCB MTG EARS)	A	-03 (.93 LG)	-03 (.93 LG)	-06 (.93 LG)	YES	YES	-03 (.95 L3)		YES
-10	STRAIN RELIEF (MULTI-OPTION END)	N/A								
-11	DB9 W/THUMB SCREW (RT ANGLE PCB MTG EARS)	A	-02 (.85 LG)	73737-02 (.57 LG)		YES	YES	-02 (.84 LG)		YES
-12	DB15 W/THUMB SCREW (RT ANGLE PCB MTG EARS)	A	-02 (.85 LG)	73737-02 (.57 LG)		YES	YES	-02 (.84 LG)		YES

PRODUCT/CIRCUIT BOARD SIZE

The CNS series allows the mix and match molding of any of the end designs on side 2, which represent one side of the housing. By adding the two ends together (B dimensions) an overall enclosure length can be determined. By adding two printed circuit boards (PCB) halves together (A dimension) the overall length of the PCB can be determined.

SPECIAL INSERT TOOLING

This product series can be insert tooled on the outside/inside of the top and bottom covers and along both sides. This insert tooling allows for molded bosses/pins, openings and product identification requirements. In addition new custom ends can be tooled for your individual requirements and needs.



MOLDED PART IDENTIFICATION MARKING

Each housing piece has CNS the series size segment molded on the inside of the finished part. The end option designation is tooled in each end e.g.(01). The lower number end option (01) is always the left end and the higher end option number (02) is the right end CNS-0102.

ATTACHMENT HARDWARE

The available attachment hardware is nickel plated and specifically sized for usage on the CN series housings. The "SAMPLE PART IDENT" diagram provides the location of hardware and establishes the required dimension which appears in TABLE 1 for each specific connector end. Part numbers for other hardware items in TABLE 1 as follows: saddle washer 73361-01, 4-40 small pattern hex nut 63291-01, #4 lock washer 50687-01.

RJ CONNECTORS

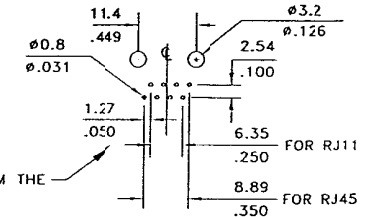
The -07 standard end option was developed around the PAC TEC RJ-11 and RJ-45 components for .063 thick PCB. These components utilize a common plastic housing with the only difference being two additional leads for the RJ-45. These components are supplied under the following part numbers:



RJ11-6
73359-01
(PT 005H 8P)

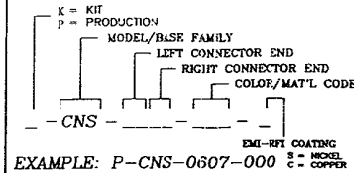


RJ45-8
73360-01
(PT 005H 8P)



HOLE PATTERN VIEWED FROM THE PCB COMPONENT SIDE

MODEL NUMBER GENERATION



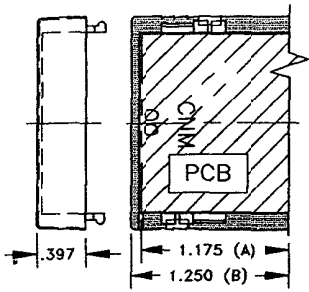
COLOR / MAT'L CODE		
COLOR	94HB	94V0
BLACK	000	-028
P.C.BONE	039	-063

*CALL FACTORY FOR AVAILABILITY OF OTHER MATERIALS AND COLORS

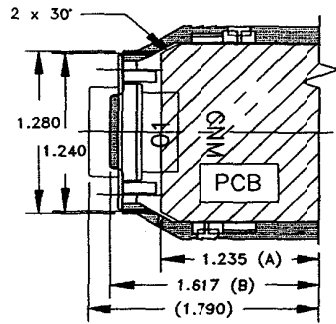
50" LONGER CSM AND A 1.00" LONGER DNL SERIES ARE AVAILABLE WITH THE SAME END OPTIONS SHOWN ON SIDE 2



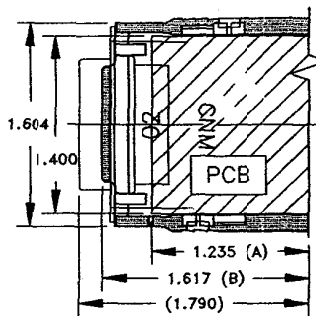
00 BLANK



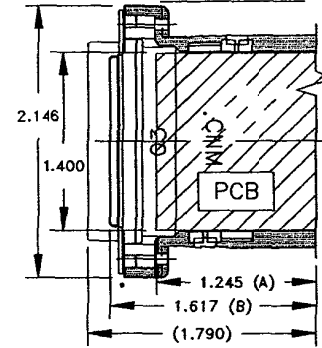
01 DB9 (B)



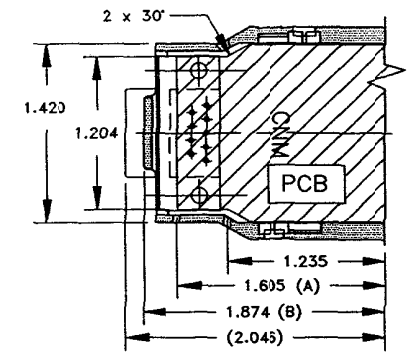
02 DB15 (B)



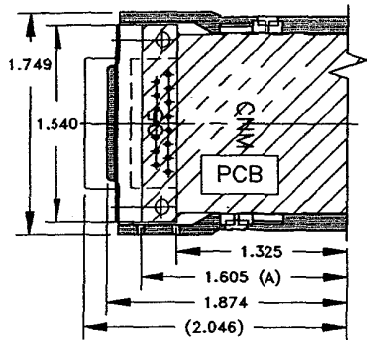
03 DB25 (B)



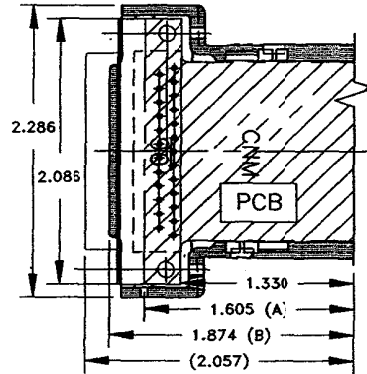
04 DB9 (PCB) (A)



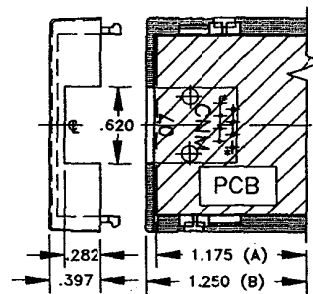
05 DB15 (PCB) (A)



06 DB25 (PCB) (A)

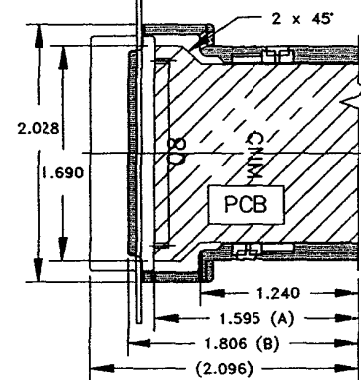


07 (RJ11/45)

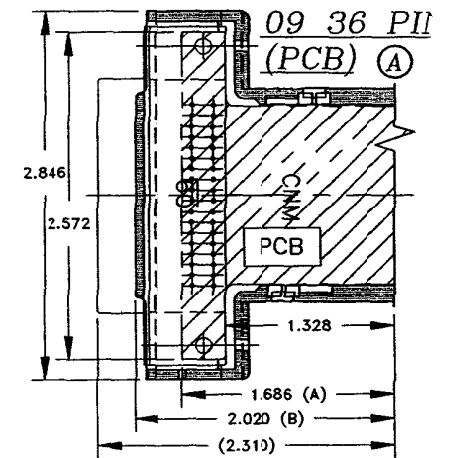


* REQUIRED FOR RJ45

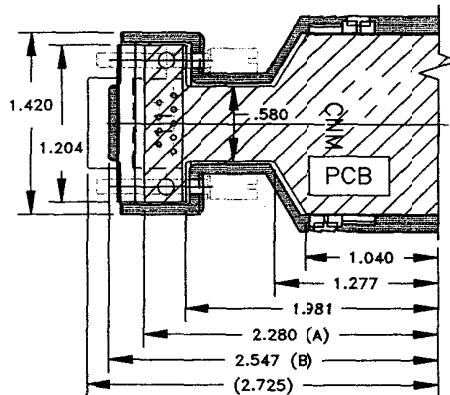
08 36 PIN (B)



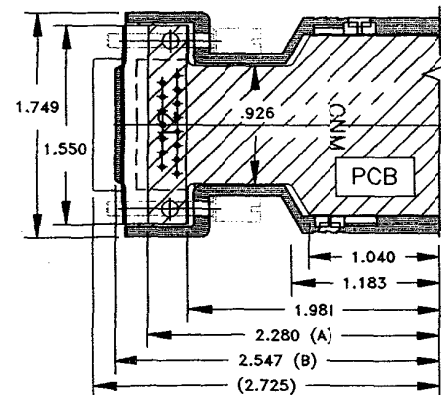
09 36 PIN (PCB) (A)





11 DB9 (PCB) (A)



12 DB15 (PCB) (A)



STANDARD ENDS

LEGEND: PCB 
 HOUSING 

(A) RIGHT ANGLE PC BOARD MOUNT

(B) STRAIGHT LINE MOUNT

PACNTEC
 CNM CONNECTOR SERIES
 1-800-220-9800