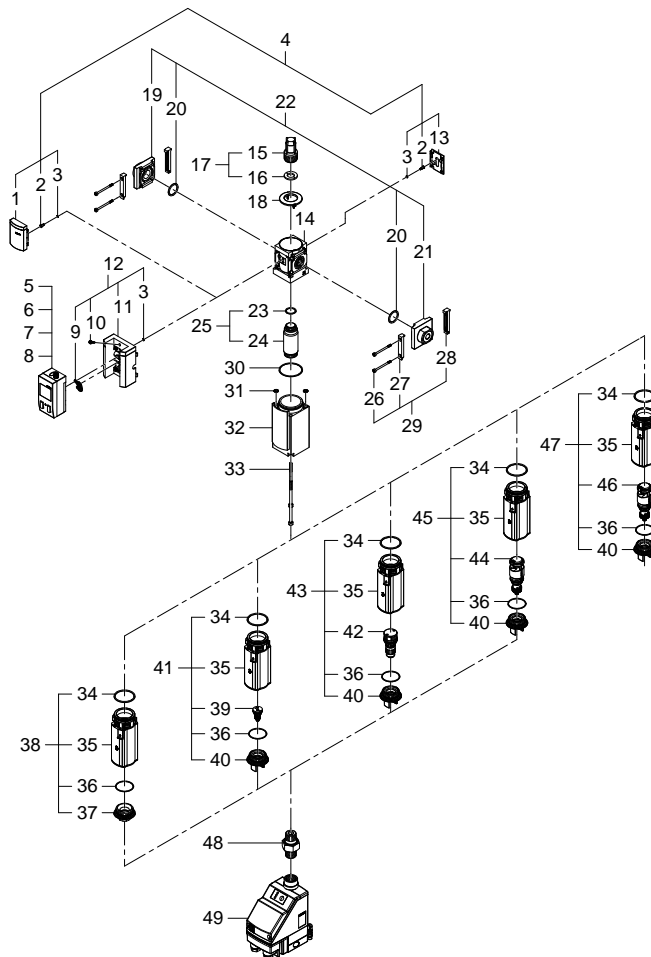


529657 MS6-LFM-1/2-AUV Micro filter - Series: All



529657 MS6-LFM-1/2-AUV Micro filter - Series: All

Pos.	Part no.	Type	Note	Qty.	Unit
A	673642	MS6-LFM Set of wearing parts	Spare parts: 2, 16, 20, 34	1	PC
1		MS6-...:VORNE:BEDR. Covering	Not available separately, see position 4	1	PC
2		MS4/6-.. Screw module	Not available separately, see position 4+999 Tightening torque 0.5 Nm / 0.4 lbf ft	2	PC
3	200900	B-1,5X1-N-NBR70 O-ring ISO3601	Lubricate with KLUEBERFOOD 4 NH1-32 during assembly	2	PC
4	673601	MS6.ERS Covering module		1	PC
5	688546	SDE1-V1-G2-MSD-L-P1-M8 Pressure sensor-SET		1	PC
6	688547	SDE1-V1-G2-MSD-L-N1-M8 Pressure sensor-SET		1	PC
7	688548	SDE1-V1-G2-MSD-L-PI-M12 Pressure sensor-SET		1	PC
8	688549	SDE1-V1-G2-MSD-L-NI-M12 Pressure sensor-SET		1	PC
9	711639	MS4/6-DP Seal	Lubricate with KLUEBERFOOD 4 NH1-32 during assembly	1	PC
10	698336	DPT-R-TP-3X10-PT10 self-tapping screw	Tightening torque 1 Nm / 0.7 lbf ft	1	PC
11		MS6-DP Adapter	Not available separately, see position 12	1	PC
12	717733	MS6-DP:SP Adapter module		1	PC
13		MS6-...:HINTEN Covering	Not available separately, see position 4	1	PC
14		MS6-LFM-1/2 Filter basic function module	Not available	1	PC
15		DA Display assembly	Not available separately, see position 17 Tightening torque 3.5 Nm / 2.6 lbf ft	1	PC
16		DA Flat seal	Not available separately, see position 17+999	1	PC
17	673610	MS4/MS6.ERS Differential pressure display		1	PC
18		MS6-LFM-DA Cover	Not available	1	PC
19		MS6-LRB-AGD-L Threaded connection plate	Not available separately, see position 22	1	PC
20	327382	B-29X3-N-NBR75 O-ring ISO3601	Lubricate with KLUEBERFOOD 4 NH1-32 during assembly	2	PC
21		MS6-AGD-R Threaded connection plate	Not available separately, see position 22	1	PC
22	526082	MS6-AGD Sub-base-SET	Please order this position from the catalogue. Select type: MS6-A*	1	PC
23		B-21X1,5-N-NBR70 O-ring ISO3601	Not available separately, see position 25 Lubricate with KLUEBERFOOD 4 NH1-32 during assembly	1	PC
24			Not available separately, see position 25 Tightening torque 2.5 Nm / 1.8 lbf ft	1	PC
25	532909	MS6-LFM-A Micro-filter cartridge	Please order this position from the catalogue. Select type: MS6-LFM-*	1	PC
26		M4X58,3-8.8 Screw	Not available separately, see position 29 Tightening torque 1.2 Nm / 0.9 lbf ft	2	PC

Pos.	Part no.	Type	Note	Qty.	Unit
27		MS6-WP:VO. Module connector	Not available separately, see position 29	1	PC
28		MS6-WP:HI. Module connector	Not available separately, see position 29	2	PC
29	8119204	MS6-MV1 Module connector	Please order this position from the catalogue. Select type: MS6-M*	2	PC
30	243102	B-52X2-N-NBR75 O-ring ISO3601	Lubricate with KLUEBERFOOD 4 NH1-32 during assembly	1	PC
31		DIN 6798-A-6,4 Serrated washer	Not available	2	PC
32		MS6-LFM/LFX-...-HF Adapter	Not available	1	PC
33	647767	ISO 4762-M6X120-8.8 Socket head screw	Tightening torque 6.3 Nm / 4.6 lbf ft	2	PC
34	383151	B-43X2,5-N-NBR65 O-ring ISO3601	Lubricate with KLUEBERFOOD 4 NH1-32 during assembly	1	PC
35		MS6-LF./LWS-U:BEDR. Profile	Not available separately, see position 38+41+43+45	1	PC
36	232517	B-38X1,5-N-NBR70 O-ring ISO3601	Lubricate with KLUEBERFOOD 4 NH1-32 during assembly	1	PC
37		MS6-LF/LFM/LFR-UE:BEARB Cover	Not available separately, see position 38 Tightening torque 10 Nm / 7.4 lbf ft	1	PC
38	684391	MS-6 LF/LFM/LFR Bowl module		1	PC
39		MS-LR/LFR Condensate drain manual	Not available separately, see position 41	1	PC
40		MS6-LF/LFR/LFM-U:MA Cover	Not available separately, see position 41+43+45+47 Tightening torque 6.8 Nm / 5.0 lbf ft	1	PC
41	673571	MS6-LF/LFR/LFB-U-M:SP Bowl module		1	PC
42		MS-LF/LFR/LFM-H Condensate drain semiautomatic	Not available separately, see position 43	1	PC
43	673572	MS6-LF/LFR/LFB-U-H:SP Bowl module		1	PC
44		MS12-LF/LFR/LFM-V:SP Condensate drain fully automatic	Not available separately, see position 45	1	PC
45	721711	MS6-LFM-...-U-V:SP Bowl module		1	PC
46		PWAA-NO Condensate drain fully automatic	Not available separately, see position 47	1	PC
47	8216004	MS6-LFM-...-U-VC:SP Bowl module		1	PC
48	685714	ESK-1/2-1/2MS Double nipple	Tightening torque 10 Nm / 7.4 lbf ft	1	PC
49	538679	PWEA-AC-6A Condensate drain	Please order this position from the catalogue. Select type: PWEA	1	PC