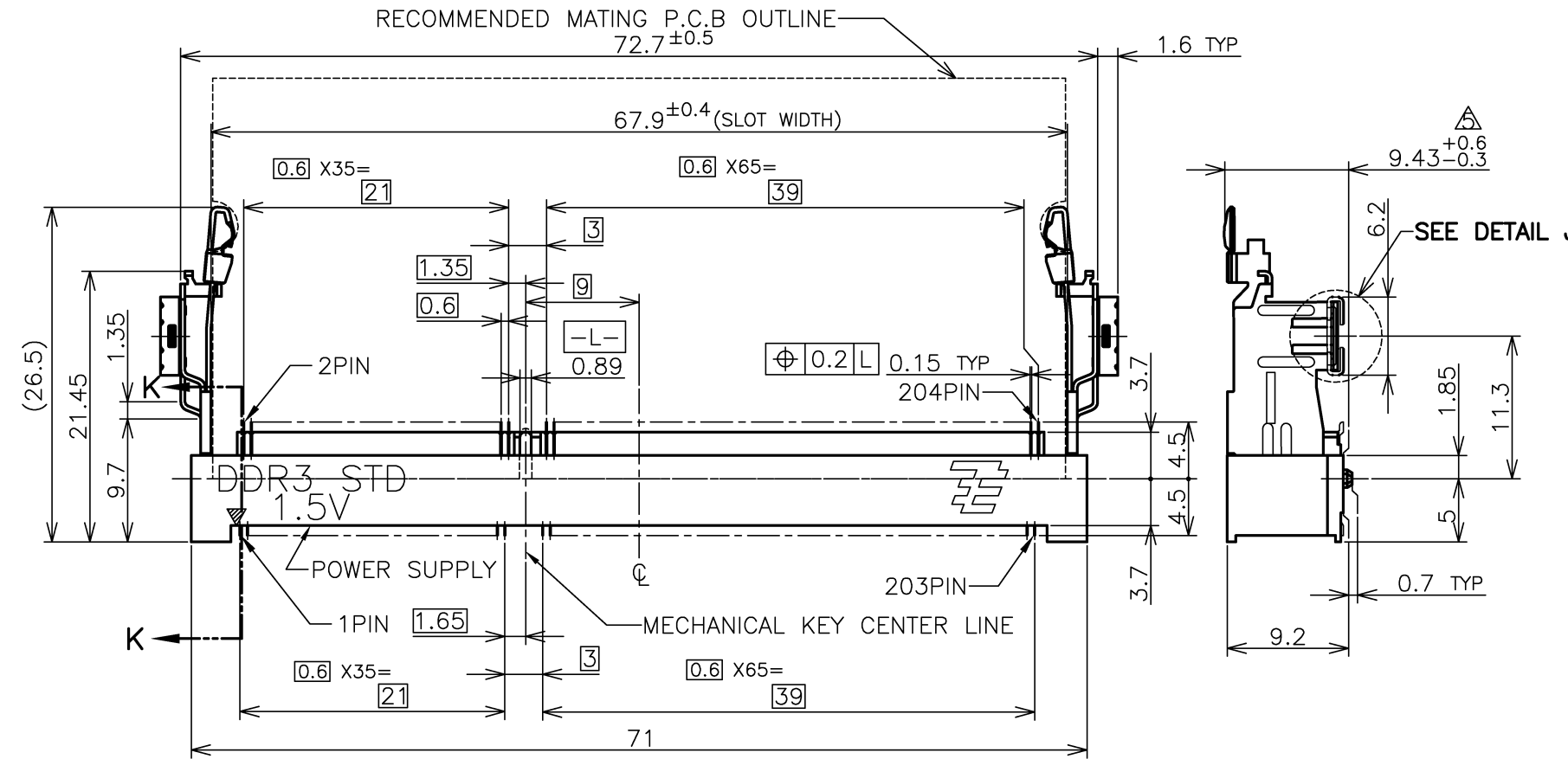
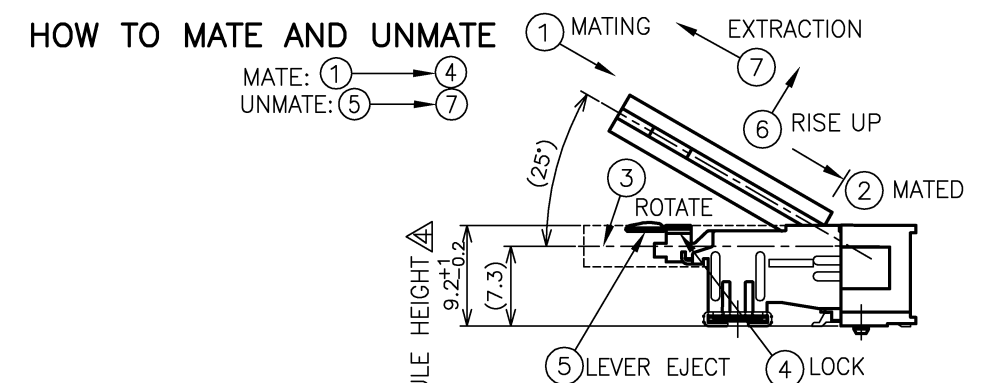
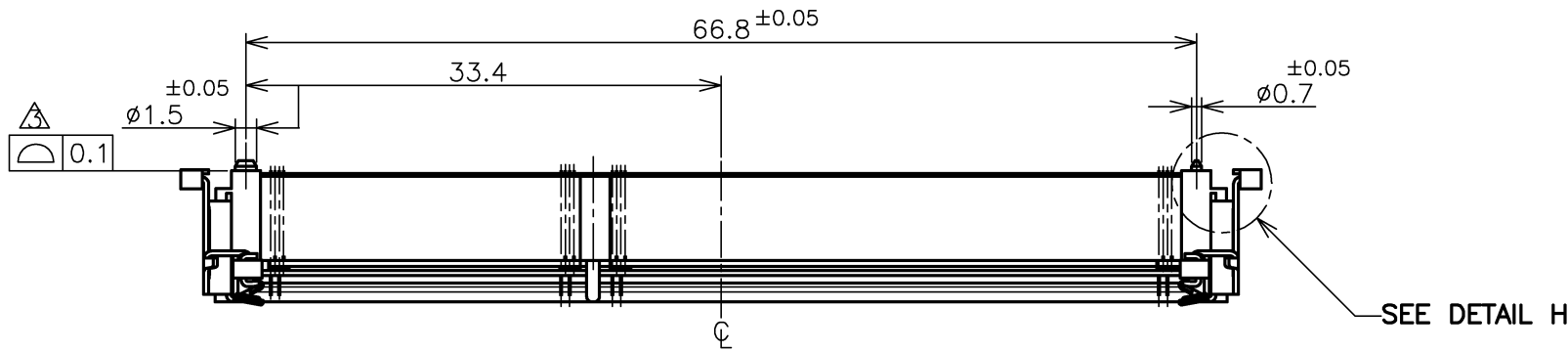
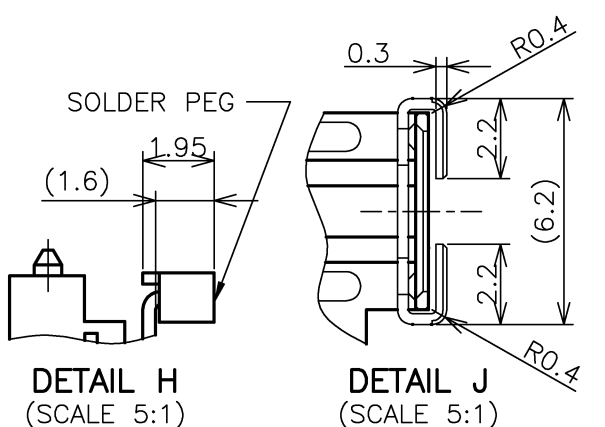
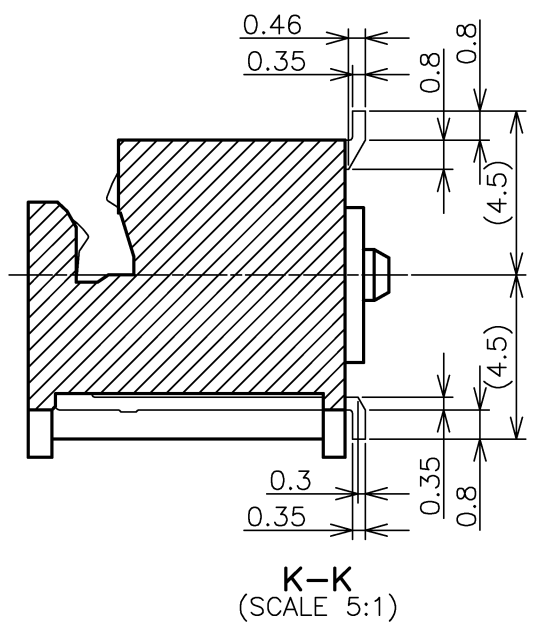


| LOC | DIST | REVISIONS | | | |
|-----|------|-------------|---------|---------------|-------------------|
| P | LTR | DESCRIPTION | DATE | DWN | APVD |
| J | / | C1 | REVISED | ECR-08-019047 | 30JUL2008 T.F K.I |



- (APPLIED TO SHEET 1-2)
- MATERIAL ; HOUSING: HIGH TEMPERATURE THERMO PLASTIC UL94V-0
 COLOR: SEE TABLE
 CONTACT: COPPER ARROY
 LOCK LEVER: STAINLESS STEEL
 PEG: COPPER ARROY
 1. FINISH ; CONTACT AREA: GOLD FLASH
 ALL OVER NICKEL.
 SOLDERING AREA: GOLD FLASH PLATING
 PEG: TIN PLATING.
 2. FINISH ; CONTACT AREA: 0.000254MIN GOLD
 ALL OVER NICKEL.
 SOLDERING AREA: GOLD FLASH PLATING
 PEG: TIN PLATING.
 3. FINISH ; CONTACT AREA: 0.00076MIN GOLD
 ALL OVER NICKEL.
 SOLDERING AREA: GOLD FLASH PLATING
 PEG: TIN PLATING.
- △ COPLANARITY: 0.1 MAX. (BEFORE SOLDERING)
 △ THE FLOATING VALUE BY SOLDERING IS NOT INCLUDED.
 △ NOT MATING CONDITION.
6. IF THE MODULE DOESN'T INSERT AND LOCK IN THE LATCH SMOOTHLY, OPEN WIDE BOTH LATCHES BY MANUAL. AND THE MODULE MUST BE INSERTED AND LOCKED IN THE LATCH.



GENERAL TOLERANCE
 10≥:±0.2
 30≥ >10:±0.25
 100≥ >30:±0.3
 ANGLES:±3'

| | | | | |
|---|--|--------------------------------|--|--------------------|
| THIS DRAWING IS A CONTROLLED DOCUMENT. | | DWN T.FUMIKURA 18SEP2007 | Tyco Electronics Corporation Kawasaki, Japan | |
| DIMENSIONS: MM | | CHK K.IKEGAMI 18SEP2007 | NAME DDR3 SODIMM SOCKET 0.6mm PITCH 204POS 9.2mm HEIGHT STANDARD TYPE | |
| TOLERANCES UNLESS OTHERWISE SPECIFIED: 0 PLC ± 1 PLC ± 2 PLC ± 3 PLC ± 4 PLC ± ANGLES ± | | APVD K.IKEGAMI 18SEP2007 | PRODUCT SPEC 108-78493 | |
| MATERIAL | | FINISH | APPLICATION SPEC | RESTRICTED TO |
| | | WEIGHT 6.2g | SIZE A3 | CAGE CODE 00779 |
| | | CUSTOMER DRAWING | DRAWING NO 2013310 | SCALE 2:1 |
| | | | SHEET 1 OF 6 | REV C1 |

4

3

2

1

THIS DRAWING IS UNPUBLISHED. RELEASED FOR PUBLICATION SEP , 2007.
 © COPYRIGHT 2007 BY TYCO ELECTRONICS CORPORATION. ALL RIGHTS RESERVED.

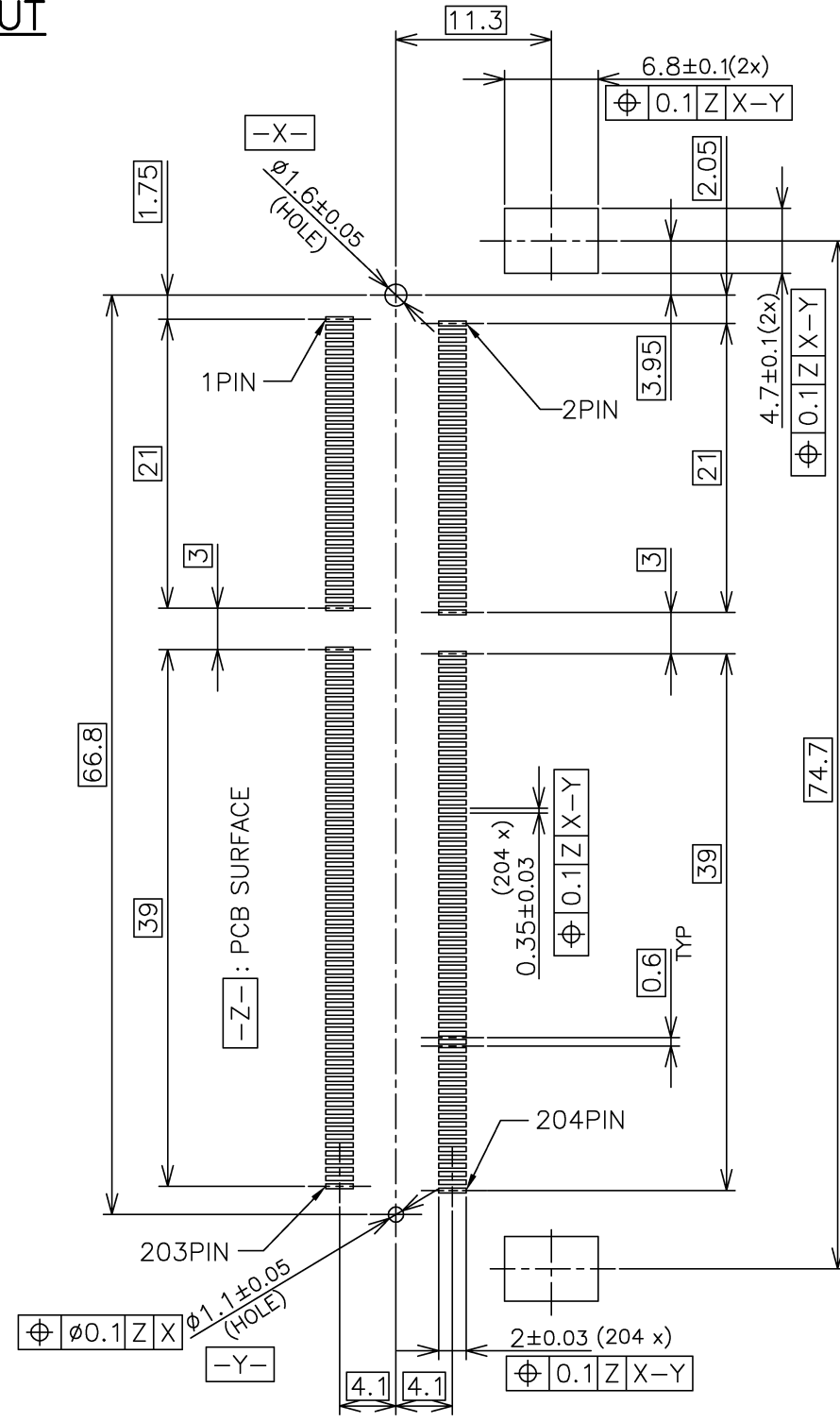
| LOC | DIST | REVISIONS | | | |
|-----|------|-------------|------|-----|------|
| P | LTR | DESCRIPTION | DATE | DWN | APVD |
| J | — | — | — | — | — |
| | | SEE SHEET 1 | — | — | — |

| TOOLING STATUS | PACKAGING TYPE | REMARK | HOUSING COLOR | FINISH | POWER SUPPLY | POS | PART NO. |
|----------------|------------------------------|-----------|---------------|----------|--------------|-----|-------------|
| AVAILABLE | ENBOSS (SEE SHEET 6) | BOSSLLESS | GRAY | NOTE 2-3 | 1.5V | 204 | 3-2013310-6 |
| AVAILABLE | ENBOSS (SEE SHEET 6) | BOSSLLESS | GRAY | NOTE 2-2 | 1.5V | 204 | 3-2013310-5 |
| AVAILABLE | ENBOSS (SEE SHEET 6) | BOSSLLESS | GRAY | NOTE 2-1 | 1.5V | 204 | 3-2013310-4 |
| AVAILABLE | ENBOSS (SEE SHEET 6) | WITHBOSS | BLACK | NOTE 2-3 | 1.5V | 204 | 2-2013310-3 |
| AVAILABLE | ENBOSS (SEE SHEET 6) | WITHBOSS | BLACK | NOTE 2-2 | 1.5V | 204 | 2-2013310-2 |
| AVAILABLE | ENBOSS (SEE SHEET 6) | WITHBOSS | BLACK | NOTE 2-1 | 1.5V | 204 | 2-2013310-1 |
| AVAILABLE | SEMI-HARD TRAY (SEE SHEET 5) | BOSSLLESS | GRAY | NOTE 2-3 | 1.5V | 204 | 1-2013310-6 |
| AVAILABLE | SEMI-HARD TRAY (SEE SHEET 5) | BOSSLLESS | GRAY | NOTE 2-2 | 1.5V | 204 | 1-2013310-5 |
| AVAILABLE | SEMI-HARD TRAY (SEE SHEET 5) | BOSSLLESS | GRAY | NOTE 2-1 | 1.5V | 204 | 1-2013310-4 |
| AVAILABLE | SEMI-HARD TRAY (SEE SHEET 5) | WITH BOSS | BLACK | NOTE 2-3 | 1.5V | 204 | 2013310-3 |
| AVAILABLE | SEMI-HARD TRAY (SEE SHEET 5) | WITH BOSS | BLACK | NOTE 2-2 | 1.5V | 204 | 2013310-2 |
| AVAILABLE | SEMI-HARD TRAY (SEE SHEET 5) | WITH BOSS | BLACK | NOTE 2-1 | 1.5V | 204 | 2013310-1 |

| | | | | |
|--|--------|------------------|--|-----------|
| THIS DRAWING IS A CONTROLLED DOCUMENT. | | DWN | Tyco Electronics Corporation Kawasaki, Japan | |
| DIMENSIONS: MM | | CHK | NAME | |
| TOLERANCES UNLESS OTHERWISE SPECIFIED: | | APVD | DDR3 SODIMM SOCKET 0.6mm PITCH 204POS 9.2mm HEIGHT STANDARD TYPE | |
| 0 PLC ± | | PRODUCT SPEC | SIZE | CAGE CODE |
| 1 PLC ± | | APPLICATION SPEC | A3 | 00779 |
| 2 PLC ± | | WEIGHT | DRAWING NO | |
| 3 PLC ± | | CUSTOMER DRAWING | G-2013310 | |
| 4 PLC ± | | SCALE | SHEET | |
| ANGLES ± | | 2:1 | 2 OF 6 | |
| MATERIAL | FINISH | RESTRICTED TO | | REV |
| | | | | C1 |

| LOC | DIST | REVISIONS | | | | | |
|-----|------|-----------|-----|-------------|------|-----|------|
| J | | P | LTR | DESCRIPTION | DATE | DWN | APVD |
| | | - | - | SEE SHEET 1 | - | - | - |

REFERENCE P.C.BOARD PATTERN LAYOUT
 (CONNECTOR MOUNTING SIDE)

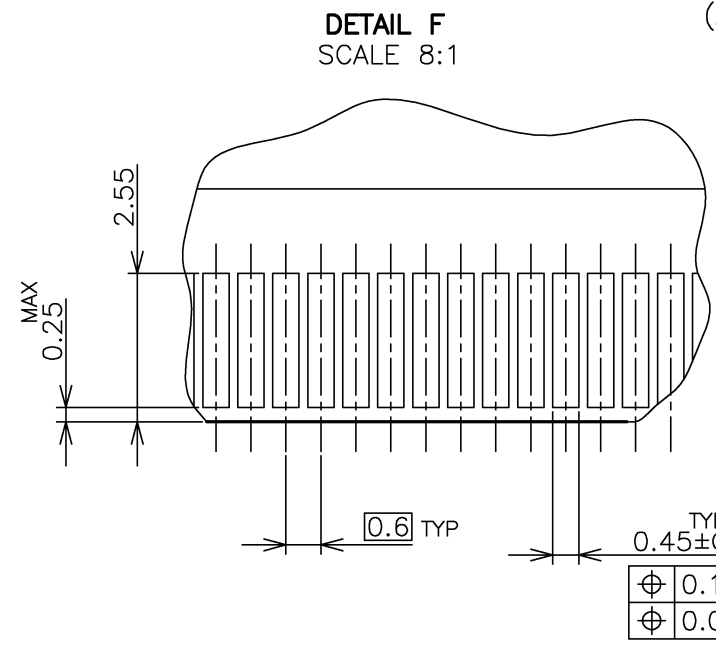
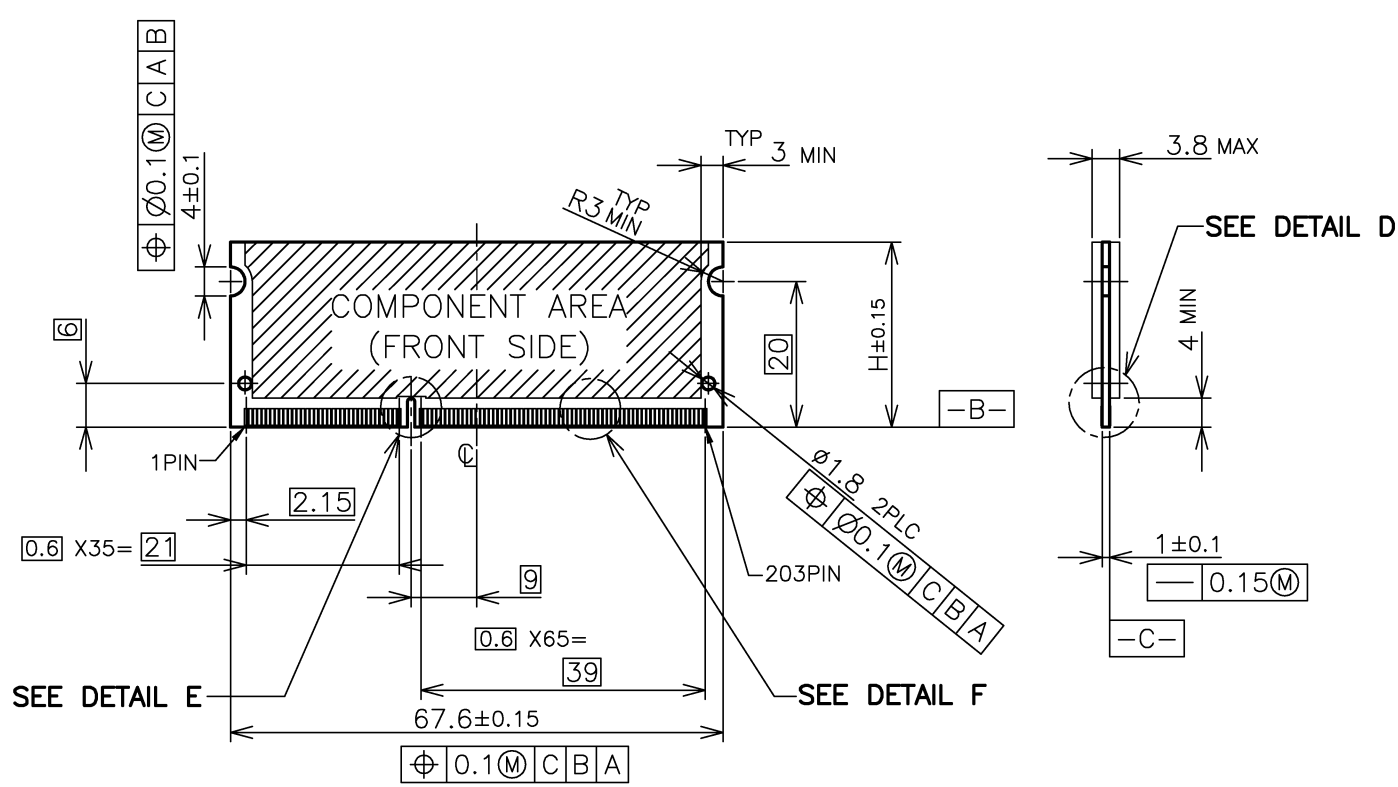


STD TYPE

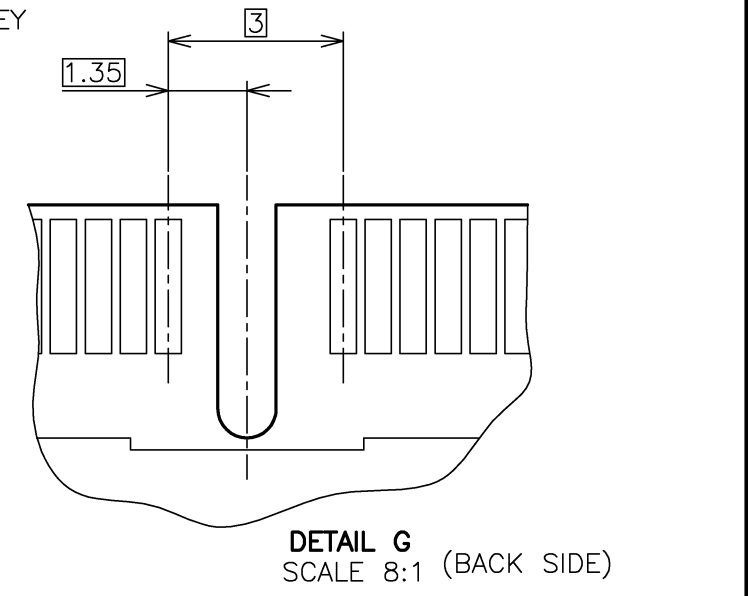
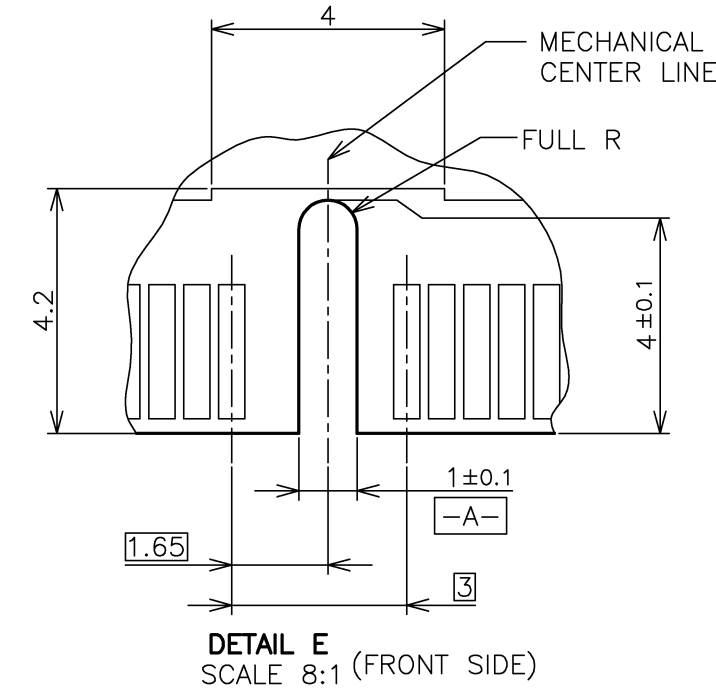
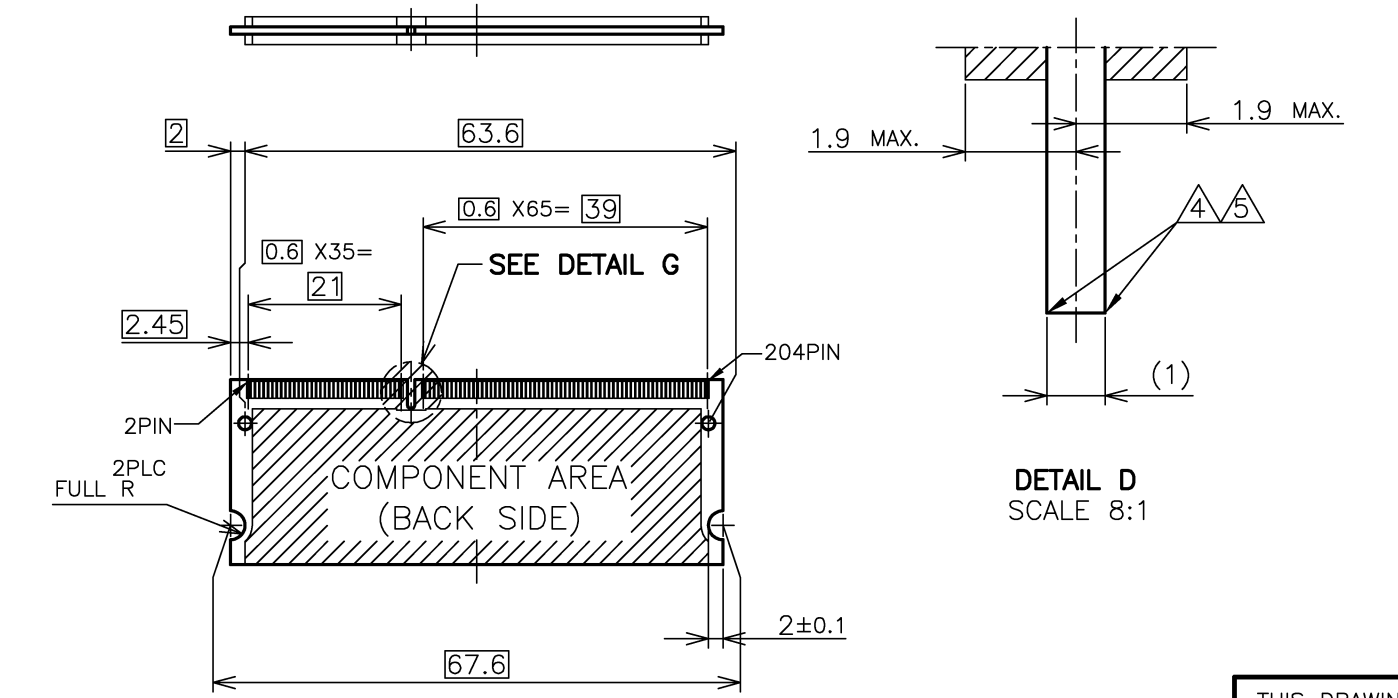
| | | | | | | | | | | | | | | | | | |
|--|---|--|---|---|---|-------|---|-------|---|-------|---|--------|---|------|--|--|--|
| THIS DRAWING IS A CONTROLLED DOCUMENT. | | DWN | | Tyco Electronics Corporation Kawasaki, Japan | | | | | | | | | | | | | |
| DIMENSIONS: MM | | TOLERANCES UNLESS OTHERWISE SPECIFIED: | | NAME | | | | | | | | | | | | | |
| <table border="1"> <tr><td>0 PLC</td><td>±</td></tr> <tr><td>1 PLC</td><td>±</td></tr> <tr><td>2 PLC</td><td>±</td></tr> <tr><td>3 PLC</td><td>±</td></tr> <tr><td>4 PLC</td><td>±</td></tr> <tr><td>ANGLES</td><td>±</td></tr> </table> | | 0 PLC | ± | 1 PLC | ± | 2 PLC | ± | 3 PLC | ± | 4 PLC | ± | ANGLES | ± | APVD | | DDR3 SODIMM SOCKET 0.6mm PITCH 204POS 9.2mm HEIGHT STANDARD TYPE | |
| 0 PLC | ± | | | | | | | | | | | | | | | | |
| 1 PLC | ± | | | | | | | | | | | | | | | | |
| 2 PLC | ± | | | | | | | | | | | | | | | | |
| 3 PLC | ± | | | | | | | | | | | | | | | | |
| 4 PLC | ± | | | | | | | | | | | | | | | | |
| ANGLES | ± | | | | | | | | | | | | | | | | |
| MATERIAL | | FINISH | | PRODUCT SPEC | | | | | | | | | | | | | |
| | | | | APPLICATION SPEC | | | | | | | | | | | | | |
| | | | | WEIGHT | | | | | | | | | | | | | |
| | | | | SIZE CAGE CODE DRAWING NO RESTRICTED TO | | | | | | | | | | | | | |
| | | | | A3 00779 G-2013310 | | | | | | | | | | | | | |
| | | CUSTOMER DRAWING | | SCALE SHEET REV | | | | | | | | | | | | | |
| | | | | 2:1 3 OF 6 C1 | | | | | | | | | | | | | |

| LOC | DIST | REVISIONS | | |
|-----|------|-------------|-----|-------------|
| J | | P | LTR | DESCRIPTION |
| | | | | DATE |
| | | | | DWN |
| | | | | APVD |
| | | SEE SHEET 1 | | |

REFERENCE MATING P.C.B CONFIGURATION



- (APPLIED TO SHEET 4)
- TOLERANCES ON ALL DIMENSIONS ±0.15 UNLESS OTHERWISE SPECIFIED.
 - P.C. BOARD THICKNESS APPLIES ACROSS TABS AND INCLUDES PLATING AND/OR METALIZATION.
 - FINISH OF PAD : GOLD PLATING 0.00076 MIN. OVER Ni PLATING 0.002MIN.
- ▲ NO BURR
 ▲ CHAMFER 0.25 MAX x 45° IF EXIST.



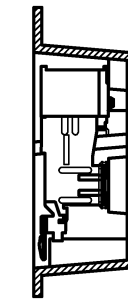
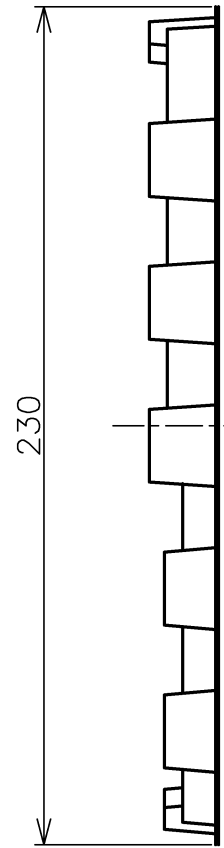
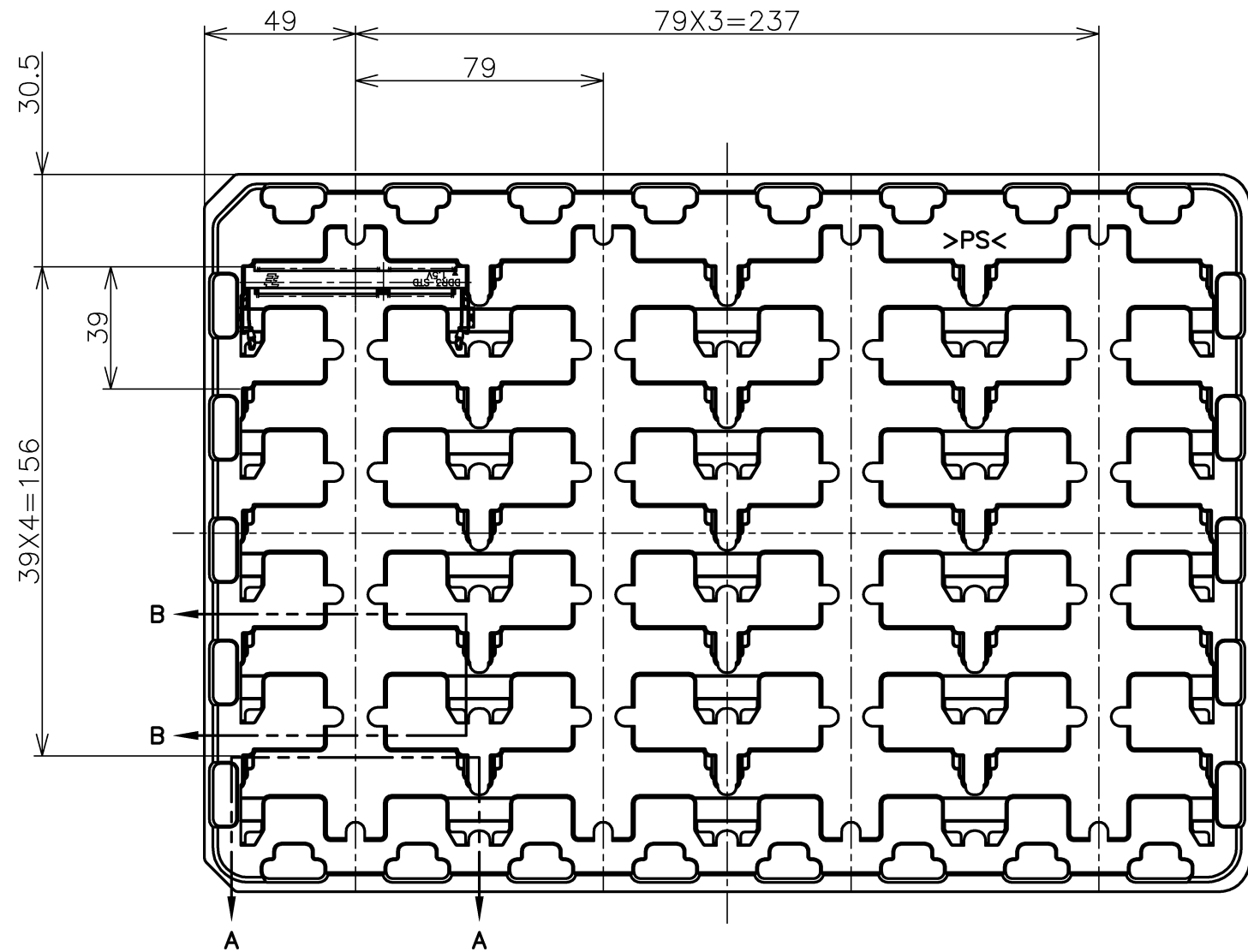
| | |
|-------|------------------|
| 30 | CA |
| 31.75 | BA |
| 25.4 | AA |
| H | SDRAM VARIATIONS |

| | | | | | |
|--|--|------------------|--|--|--|
| THIS DRAWING IS A CONTROLLED DOCUMENT. | | DWN | | Tyco Electronics Corporation Kawasaki, Japan | |
| DIMENSIONS: MM | | CHK | | NAME | |
| TOLERANCES UNLESS OTHERWISE SPECIFIED: | | APVD | | DDR3 SODIMM SOCKET 0.6mm PITCH 204POS 9.2mm HEIGHT STANDARD TYPE | |
| 0 PLC ± | | PRODUCT SPEC | | SIZE | |
| 1 PLC ± | | APPLICATION SPEC | | CAGE CODE | |
| 2 PLC ± | | WEIGHT | | DRAWING NO | |
| 3 PLC ± | | CUSTOMER DRAWING | | RESTRICTED TO | |
| 4 PLC ± | | | | A3 00779 | |
| ANGLES ± | | | | C-2013310 | |
| FINISH ± | | | | SCALE | |
| | | | | 2:1 | |
| | | | | SHEET | |
| | | | | 4 OF 6 | |
| | | | | REV | |
| | | | | C1 | |

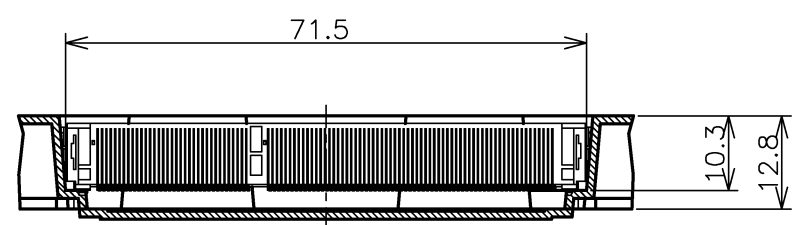
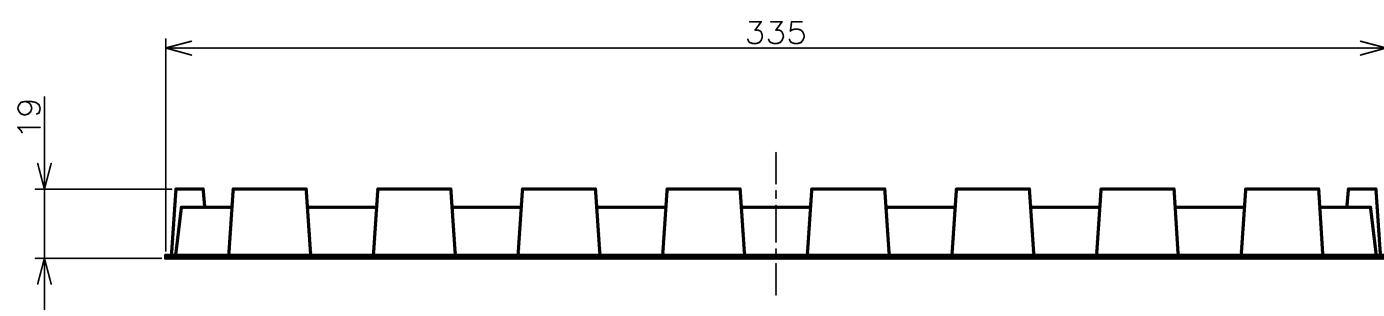
THIS DRAWING IS UNPUBLISHED. RELEASED FOR PUBLICATION SEP. 2007.
 © COPYRIGHT 2007 BY TYCO ELECTRONICS CORPORATION. ALL RIGHTS RESERVED.

| LOC | DIST | REVISIONS | | | |
|-----|------|-------------|------|-----|------|
| P | LTR | DESCRIPTION | DATE | DWN | APVD |
| J | / | SEE SHEET 1 | - | - | - |

(APPLIED TO SHEET 5)
 1. THE DIRECTION OF EACH CONNECTOR ON A TRAY IS REFERRED TO THIS DRAWING.
 2. GENERAL TOLERANCE: ± 0.5 , $\pm 3'$



B-B
SCALE 1:1



A-A
SCALE 1:1
(180DEG. ROTATE)

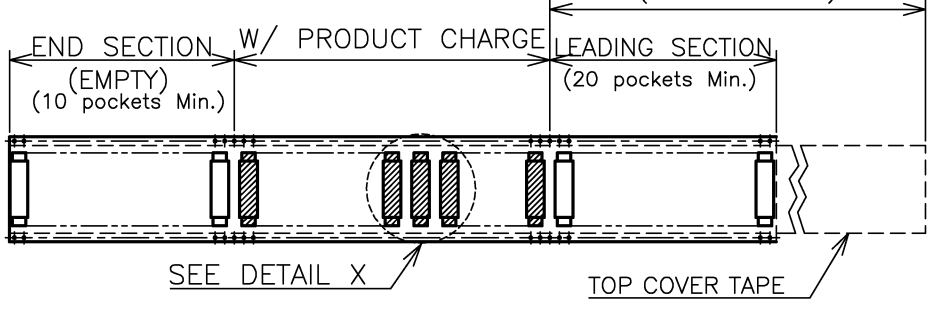
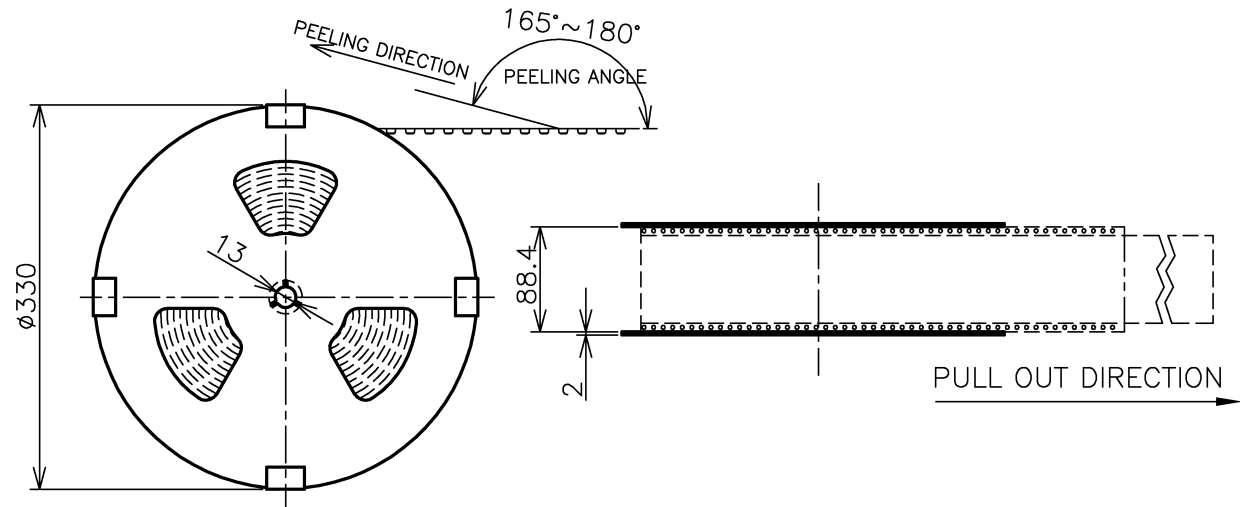
| | | |
|---------|----------|-------------|
| 200EA | 20EA | *-2013310-* |
| QTY/BOX | QTY/TRAY | PART NO. |

| | | | | | |
|--|--|--|-----------|--|-----------|
| THIS DRAWING IS A CONTROLLED DOCUMENT. | | DWN | | Tyco Electronics Corporation Kawasaki, Japan | |
| DIMENSIONS: MM | | TOLERANCES UNLESS OTHERWISE SPECIFIED: | | NAME | |
| | | 0 PLC | ± 0.5 | DDR3 SODIMM SOCKET 0.6mm PITCH 204POS 9.2mm HEIGHT STANDARD TYPE | |
| | | 1 PLC | ± 0.5 | | |
| | | 2 PLC | ± 0.5 | | |
| | | 3 PLC | ± 0.5 | | |
| MATERIAL | | 4 PLC | ± 0.5 | SIZE | CAGE CODE |
| FINISH | | ANGLES | $\pm 3'$ | A3 | 00779 |
| | | | | DRAWING NO | |
| | | | | G-2013310 | |
| | | | | RESTRICTED TO | |
| | | | | - | |
| | | | | SCALE | |
| | | | | 1:2 | |
| | | | | SHEET | |
| | | | | 5 OF 6 | |
| | | | | REV | |
| | | | | C1 | |

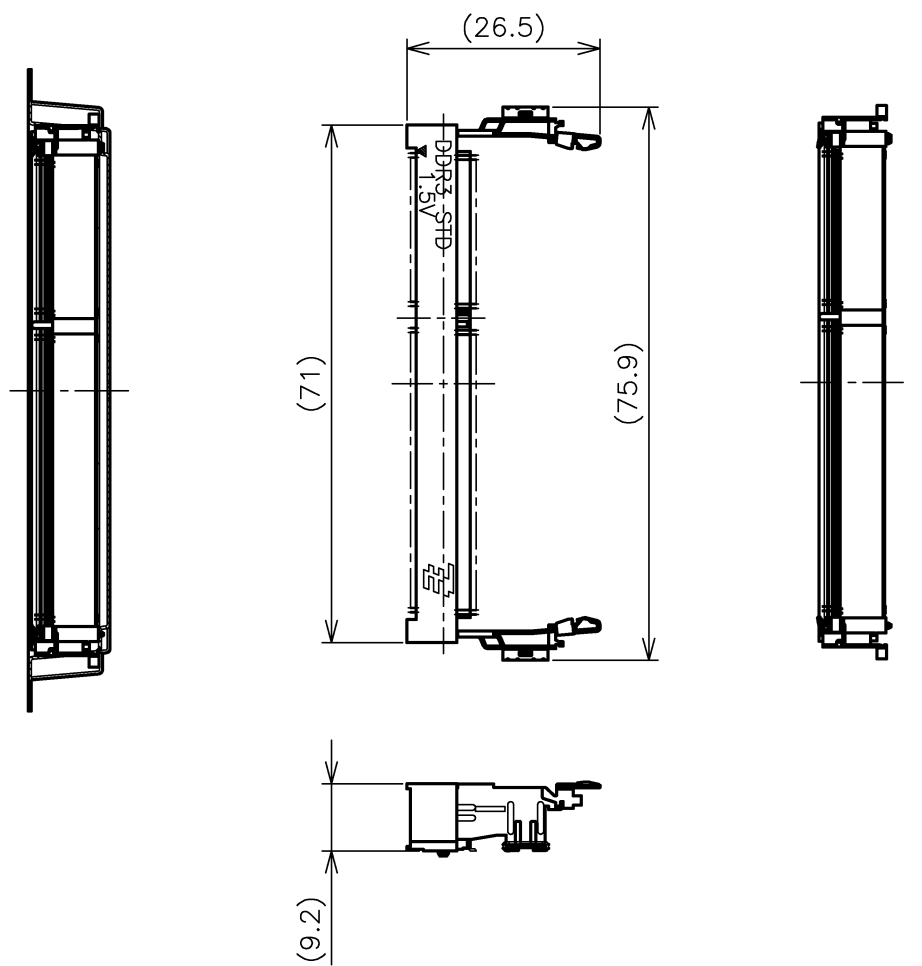
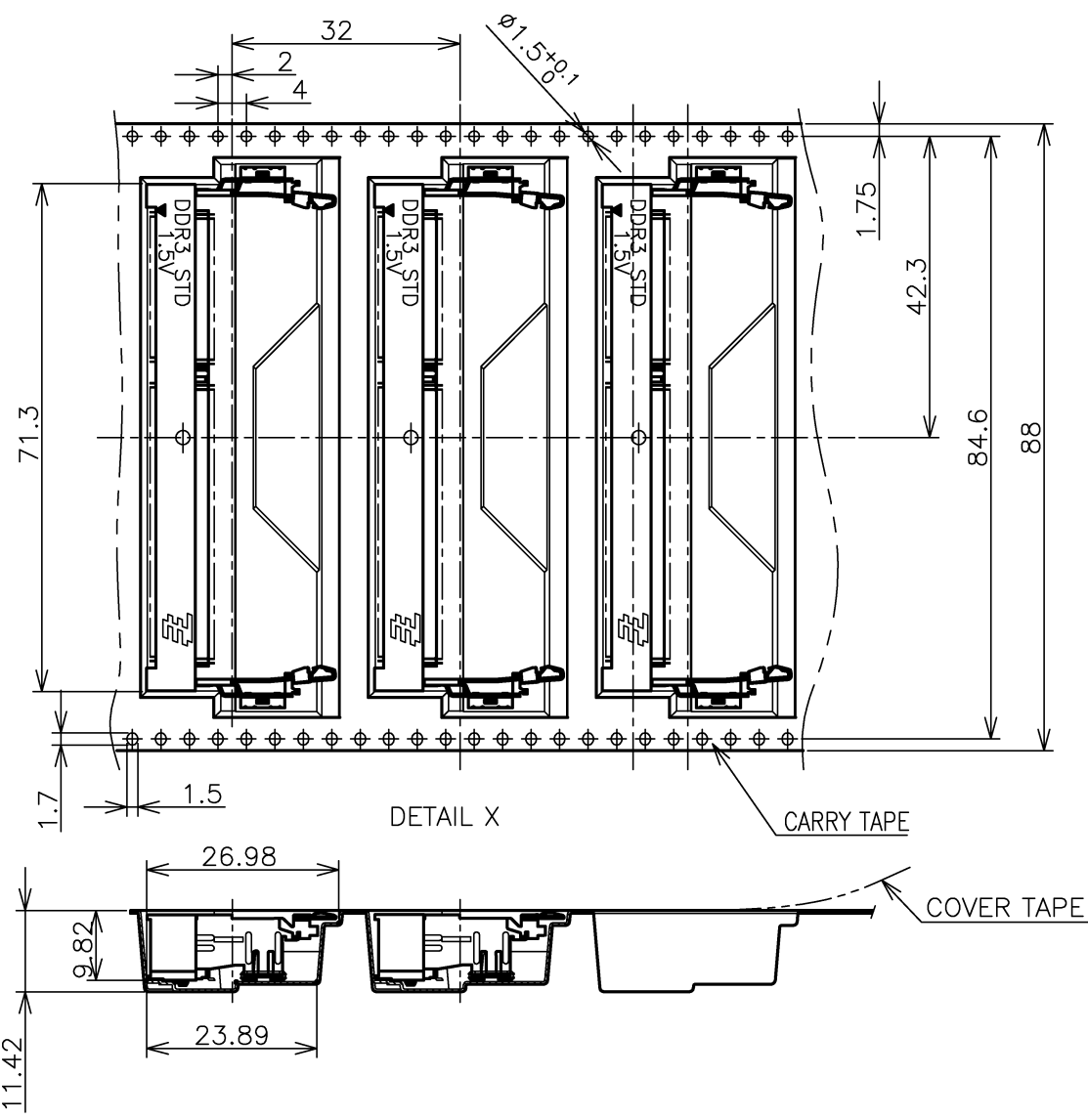
THIS DRAWING IS UNPUBLISHED. RELEASED FOR PUBLICATION SEP. 2007.
 © COPYRIGHT 2007 BY TYCO ELECTRONICS CORPORATION. ALL RIGHTS RESERVED.

| LOC | DIST | REVISIONS | | | |
|-----|------|-------------|------|-----|------|
| P | LTR | DESCRIPTION | DATE | DWN | APVD |
| J | / | SEE SHEET 1 | - | - | - |

D
C
B
A



- (APPLIED TO SHEET 6)
1. THE DIRECTION OF EACH CONNECTOR ON A EMBOSS IS REFERRED TO THIS DRAWING.
 2. GENERAL TOLERANCE: ± 0.5 , $\pm 3^\circ$



| | |
|----------|-------------|
| 150EA | *-2013310-* |
| QTY/REEL | PART NO. |

| | | | | | |
|--|--|------------------|--|--|--|
| THIS DRAWING IS A CONTROLLED DOCUMENT. | | DWN | | Tyco Electronics Corporation Kawasaki, Japan | |
| DIMENSIONS: MM | | CHK | | NAME | |
| TOLERANCES UNLESS OTHERWISE SPECIFIED: | | APVD | | DDR3 SODIMM SOCKET 0.6mm PITCH 204POS 9.2mm HEIGHT STANDARD TYPE | |
| 0 PLC ± 0.5 | | PRODUCT SPEC | | SIZE | |
| 1 PLC ± 0.5 | | APPLICATION SPEC | | CAGE CODE | |
| 2 PLC ± 0.5 | | WEIGHT | | DRAWING NO | |
| 3 PLC ± 0.5 | | CUSTOMER DRAWING | | RESTRICTED TO | |
| 4 PLC ± 0.5 | | | | A3 00779 C-2013310 | |
| ANGLES $\pm 3^\circ$ | | | | SCALE | |
| FINISH | | | | 1:2 | |
| | | | | SHEET 6 OF 6 | |
| | | | | REV C1 | |