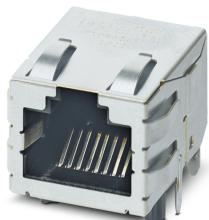


## RJ45 PCB connectors - CUC-IND-J1ST-A/R4LS-PG - 1099280

Please be informed that the data shown in this PDF Document is generated from our Online Catalog. Please find the complete data in the user's documentation. Our General Terms of Use for Downloads are valid (<http://phoenixcontact.com/download>)




RJ45 PCB connectors, type: RJ45, degree of protection: IP20, number of positions: 8, 10 Gbps, connection method: THR solder connection

### Your advantages

- ✔ Design perfectly matched to the RJ45 INDUSTRIAL connector for reliable connectivity
- ✔ Ideal for demanding applications due to the high shock and vibration resistance as well as the extended temperature range
- ✔ 360° shielding ensures reliable transmission, even in industrial applications
- ✔ Housing shield springs enable an optimized EMC shielding concept
- ✔ Enables data transmission speeds of up to 10 Gbps in accordance with CAT6A
- ✔ Automated handling process thanks to reflow capability
- ✔ Tray packing



### Key Commercial Data

Packing unit	84 pc
Minimum order quantity	84 pc
GTIN	 4 055626 947655
GTIN	4055626947655
Weight per Piece (excluding packing)	5.500 g
Custom tariff number	85366930
Country of origin	China
Sales Key	ABNABB

### Technical data

#### Mechanical characteristics

Connection method	THR solder connection
Number of slots	1
Rated voltage (III/2)	72 V DC
Rated surge voltage (III/3)	1.5 kV

# RJ45 PCB connectors - CUC-IND-J1ST-A/R4LS-PG - 1099280

## Technical data

### Mechanical characteristics

Overvoltage category	II
Insertion/withdrawal cycles	> 750
Number of positions	8
Degree of pollution	2
Weight	5.5 g
Type	RJ45
Flammability rating according to UL 94	V0
Head 1 pin pattern	RJ45

### Ambient conditions

Ambient temperature (operation)	-40 °C ... 105 °C
---------------------------------	-------------------

### Material data

Contact surface material	Gold
Contact material	Copper alloy
Contact carrier material	LCP
Width	18 mm
Height	17.6 mm
Length	17.1 mm
Mounting type	PCB mounting
Housing material	PA-GF
Housing surface material 1	Nickel

### Electrical characteristics

Number of positions	8
GRP transmission properties	Data transmission 10 Gbps
Transmission speed	10 Gbps
Rated current	1.5 A
Overvoltage category	II
Degree of pollution	2
Test voltage Core/Core	1000 V
Test voltage Core/Shield	1500 V

### Standards and Regulations

Halogen-free	yes
--------------	-----

## Classifications

### eCl@ss

eCl@ss 10.0.1	27440205
eCl@ss 11.0	27440223
eCl@ss 9.0	27440205

# RJ45 PCB connectors - CUC-IND-J1ST-A/R4LS-PG - 1099280

## Approvals

### Approvals

---

#### Approvals

EAC / UL Recognized / cUL Recognized / cULus Recognized

---

#### Ex Approvals

---

### Approval details

EAC			B.01687
UL Recognized		<a href="http://database.ul.com/cgi-bin/XYV/template/LISEXT/1FRAME/index.htm">http://database.ul.com/cgi-bin/XYV/template/LISEXT/1FRAME/index.htm</a>	FILE E 335024
cUL Recognized		<a href="http://database.ul.com/cgi-bin/XYV/template/LISEXT/1FRAME/index.htm">http://database.ul.com/cgi-bin/XYV/template/LISEXT/1FRAME/index.htm</a>	FILE E 335024
cULus Recognized			

## Accessories

### Accessories

#### Data plug

RJ45 connector - CUC-IND-C1ZNI-S/R4IE10G8 - 1149846



RJ45 connector, IP20, CAT6<sub>A</sub>, 8-pos., with IDC fast connection technology, for AWG 26 - 24 1-wire, 7-wire, and 19-wire conductors

---

## RJ45 PCB connectors - CUC-IND-J1ST-A/R4LS-PG - 1099280

### Accessories

RJ45 connector - CUC-IND-C1ZNI-S/R4IP10G8 - 1149847



RJ45 connector, IP20, CAT6<sub>A</sub>, 8-pos., with IDC fast connection technology, for AWG 23 - 22 1-wire, 7-wire, and 19-wire conductors

RJ45 connector - CUC-IND-C1ZNI-S/R4IP8 - 1421126



RJ45 connector, degree of protection: IP20, number of positions: 8, 1 Gbps, CAT5 (IEC 11801:2002), material: Zinc die-cast, connection method: IDC fast connection, connection cross section: AWG 23- 22, cable outlet: straight, color: green, PROFINET

RJ45 connector - CUC-IND-C1ZNI-S/R4IE8 - 1421607



RJ45 connector, degree of protection: IP20, number of positions: 8, 1 Gbps, CAT5 (IEC 11801:2002), material: Zinc die-cast, connection method: IDC fast connection, connection cross section: AWG 26- 24, cable outlet: straight, color: green, Ethernet

RJ45 connector - CUC-IND-C1ZNI-S/R4QV6 - 1406335



RJ45 connector, degree of protection: IP20, number of positions: 6, 100 Mbps, CAT5 (IEC 11801:2002), material: Zinc die-cast, connection method: IDC fast connection, connection cross section: AWG 26- 24, cable outlet: straight, High degree of resistance to vibration; 360° shielding; one-piece design; special tool-free assembly, VARAN

RJ45 connector - CUC-IND-C1ZNI-T/R4IE8 - 1421877



RJ45 connector, degree of protection: IP20, number of positions: 8, 1 Gbps, CAT5 (IEC 11801:2002), material: Zinc die-cast, connection method: IDC fast connection, connection cross section: AWG 26- 24, cable outlet: angled, Ethernet

## RJ45 PCB connectors - CUC-IND-J1ST-A/R4LS-PG - 1099280

### Accessories

#### RJ45 connector - CUC-IND-C1ZNI-B/R4IE8 - 1421876



RJ45 connector, degree of protection: IP20, number of positions: 8, 1 Gbps, CAT5 (IEC 11801:2002), material: Zinc die-cast, connection method: IDC fast connection, connection cross section: AWG 26- 24, cable outlet: angled, Ethernet

---

#### RJ45 connector - CUC-IND-C1ZNI-B/R4QV6 - 1406338



RJ45 connector, degree of protection: IP20, number of positions: 6, 100 Mbps, CAT5 (IEC 11801:2002), material: Zinc die-cast, connection method: IDC fast connection, connection cross section: AWG 26- 24, cable outlet: angled, High degree of resistance to vibration; 360° shielding; one-piece design; special tool-free assembly, VARAN

---

#### RJ45 connector - CUC-IND-C1ZNI-T/R4QV6 - 1406341



RJ45 connector, degree of protection: IP20, number of positions: 6, 100 Mbps, CAT5 (IEC 11801:2002), material: Zinc die-cast, connection method: IDC fast connection, connection cross section: AWG 26- 24, cable outlet: angled, High degree of resistance to vibration; 360° shielding; one-piece design; special tool-free assembly, VARAN

---

#### RJ45 connector - CUC-IND-C1ZNI-B/R4IP8 - 1421127



RJ45 connector, degree of protection: IP20, number of positions: 8, 1 Gbps, CAT5 (IEC 11801:2002), material: Zinc die-cast, connection method: IDC fast connection, connection cross section: AWG 23- 22, cable outlet: angled, Ethernet/PROFINET

---

#### RJ45 connector - CUC-IND-C1ZNI-T/R4IP8 - 1421128



RJ45 connector, degree of protection: IP20, number of positions: 8, 1 Gbps, CAT5 (IEC 11801:2002), material: Zinc die-cast, connection method: IDC fast connection, connection cross section: AWG 23- 22, cable outlet: angled, Ethernet/PROFINET