



Datasheet

Stock No: 267-4007

ENGLISH

RS Pro Butt Wire Splice Connector, Yellow, Insulated 12 → 10 AWG



Product Details:

RS Pro Nylon Insulated Tubular Butt Splice

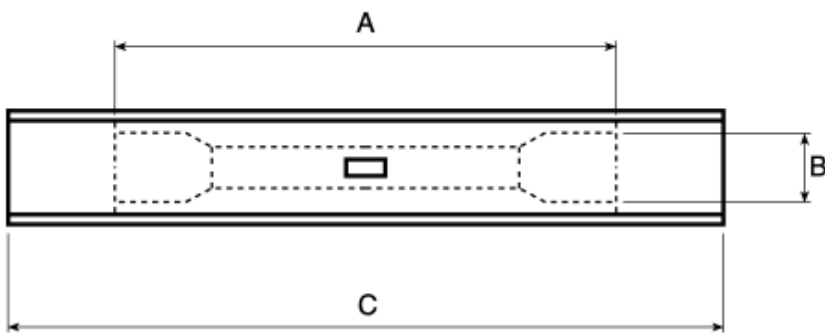
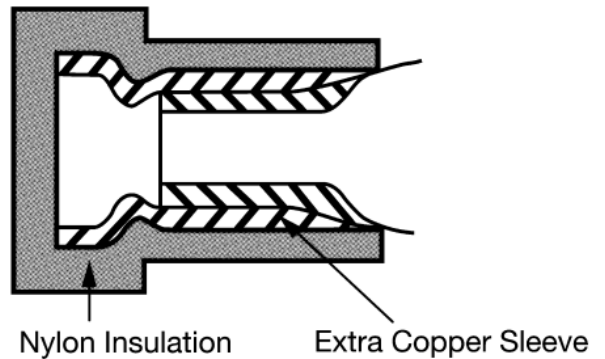
Nylon insulated tubular copper butt splices with a window or sight-hole. These insulated butt splices are colour coded for use with different wire ranges. For suitable crimp tool see stock number 267-3133.

- Red 0.5 - 1.5 mm²
- Blue 1 - 2.6 mm²
- Yellow 4.0 - 6.5 mm²

Specifications:

Splice Type:	Butt
Wire Size:	12 → 10 AWG
Overall Length:	41mm
Insulation:	Insulated
Colour:	Yellow
Insulation Material:	Nylon
Contact Material:	Copper

Temperature rating:	-55°C to 105°C
Terminal Material:	
Receptacles	High grade brass
Other terminals	High grade copper
Voltage rating	
Brass	300V
Copper	600V
Additional Sleeve Material:	High grade copper



Type	A	B	C
Red	22.0	3.2	31.0
Blue	22.0	3.8	31.0
Yellow	29.0	5.5	41.0