

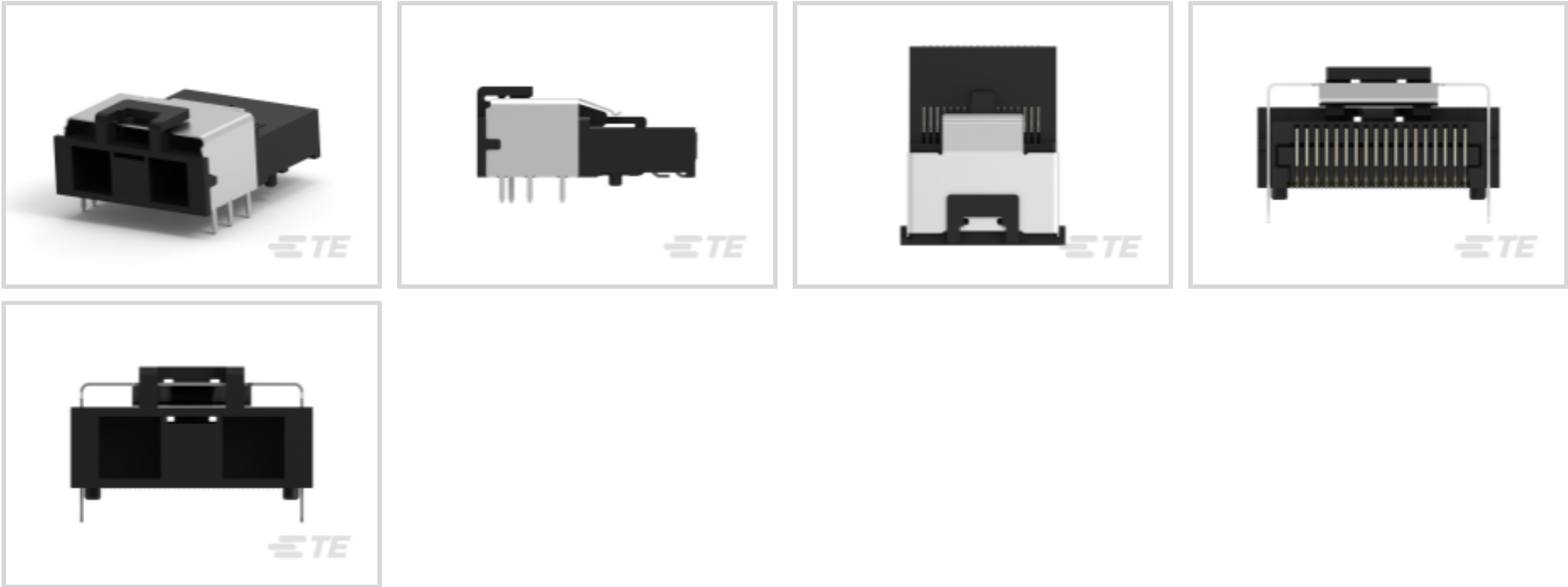


Mini-SAS

TE Internal #: 1888861-6  
Mini-SAS, Receptacle, Cable-to-Board, 36 Position, 1 Row, 1 Port,  
Right Angle, Through Hole - Solder, .8 mm [.031 in] Centerline,  
Signal, Mini-SAS

[View on TE.com >](#)

Connectors > PCB Connectors > SAS & MiniSAS > Mini-SAS Shielded Receptacle Assemblies



SAS Connector Type: **Mini-SAS**  
Connector & Housing Type: **Receptacle**  
Connector System: **Cable-to-Board**  
Number of Positions: **36**  
Number of Rows: **1**

[All Mini-SAS Shielded Receptacle Assemblies \(19\)](#)

Features

Product Type Features

Connector & Contact Terminates To	Printed Circuit Board
Shell	With
SAS Connector Type	Mini-SAS
Connector & Housing Type	Receptacle
Connector System	Cable-to-Board

Configuration Features

Keying Type	Universal
Number of Positions	36
Number of Rows	1
Number of Ports	1
PCB Mount Orientation	Right Angle

Body Features

--	--



Primary Product Color	Black
-----------------------	-------

Contact Features

Contact Mating Area Plating Material	Gold (Au)
Contact Base Material	Phosphor Bronze
	30 μin
Contact Current Rating (Max)	.5 A

Termination Features

Termination Post & Tail Length	2.8 mm[.11 in]
Termination Method to PCB	Through Hole - Solder

Mechanical Attachment

PCB Mount Retention	Without
Connector Mounting Type	Board Mount

Housing Features

Housing Material	LCP (Liquid Crystal Polymer)
Centerline (Pitch)	.8 mm[.031 in]

Dimensions

	.333 in
--	---------

Usage Conditions

High Temperature Housing	Yes
Operating Temperature Range	-55 – 105 °C[-67 – 221 °F]

Operation/Application

Circuit Application	Signal
---------------------	--------

Packaging Features

Packaging Method	Tape & Reel
Packaging Quantity	125

Product Compliance

For compliance documentation, visit the product page on TE.com>

EU RoHS Directive 2011/65/EU	Compliant
EU ELV Directive 2000/53/EC	Compliant
China RoHS 2 Directive MIIT Order No 32, 2016	No Restricted Materials Above Threshold
EU REACH Regulation (EC) No. 1907/2006	



Current ECHA Candidate List: JAN 2025 (247)  
Candidate List Declared Against: JAN 2025 (247)  
Does not contain REACH SVHC

Halogen Content	Not Low Halogen - contains Br or Cl > 900 ppm.
-----------------	--

Solder Process Capability      Reflow solder capable to 260°C

Product Compliance Disclaimer


This information is provided based on reasonable inquiry of our suppliers and represents our current actual knowledge based on the information they provided. This information is subject to change. The part numbers that TE has identified as EU RoHS compliant have a maximum concentration of 0.1% by weight in homogenous materials for lead, hexavalent chromium, mercury, PBB, PBDE, DBP, BBP, DEHP, DIBP, and 0.01% for cadmium, or qualify for an exemption to these limits as defined in the Annexes of Directive 2011/65/EU (RoHS2). Finished electrical and electronic equipment products will be CE marked as required by Directive 2011/65/EU. Components may not be CE marked. Additionally, the part numbers that TE has identified as EU ELV compliant have a maximum concentration of 0.1% by weight in homogenous materials for lead, hexavalent chromium, and mercury, and 0.01% for cadmium, or qualify for an exemption to these limits as defined in the Annexes of Directive 2000/53/EC (ELV). Regarding the REACH Regulation, the information TE provides on SVHC in articles for this part number is based on the latest European Chemicals Agency (ECHA) 'Guidance on requirements for substances in articles' posted at this URL: <https://echa.europa.eu/guidance-documents/guidance-on-reach>

Compatible Parts



TE Part # 1888861-4  
[recpt conn assy ra 36p nokey shld p/f](#)

Also in the Series | Mini-SAS



[SAS & MiniSAS\(30\)](#)

Customers Also Bought



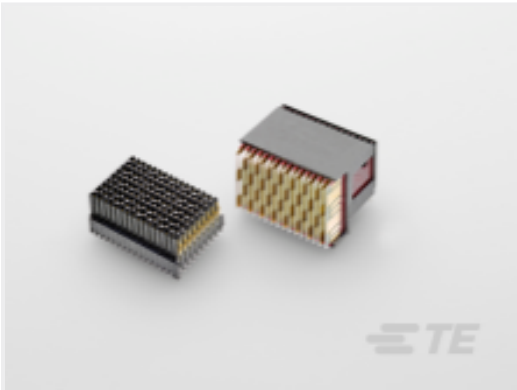
TE Part #1-6450869-4  
V/R 2ACP+1LP+32S+3HDP+1LP+1P



TE Part #1116503-2  
MJ,10MM,8P,SHLD,NOPNL TABS,SN



TE Part #2-1761465-2  
PCI Express RA assy 5.8mm slot 2.3 mm pc



TE Part #2302796-1  
RAPLUGASSY,LEFTEND,HALF,RTM, VPX,MGRT3



TE Part #9-1879333-1  
CPF0402 200K 0.1% 25PPM 5K RL



TE Part #6-1614882-9  
CPF 0603 110K 0.1% 25PPM 5K RL



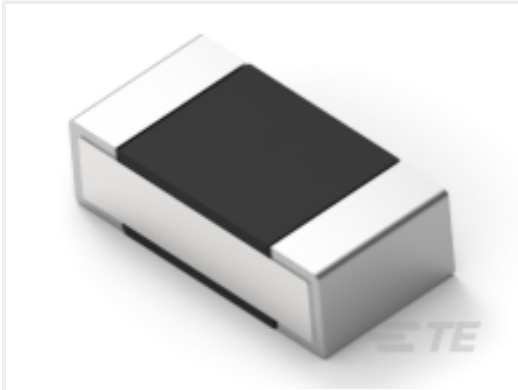
TE Part #292317-4  
STD USB TYPE B, R/A, T/H



TE Part #1551920-2  
zQSFP+ connector assembly



TE Part #794287-1  
04P CMNL HDR ASSY BLK HT



TE Part #5-2176305-1  
RP 1E 0.1W 357R 0.1% 25PPM 5K RL

Documents

CAD Files

Customer View Model

ENG\_CVM\_CVM\_1888861-6\_A1.2d\_dxf.zip

English

3D PDF

3D

Customer View Model

ENG\_CVM\_CVM\_1888861-6\_A1.3d\_igs.zip

English

Customer View Model

ENG\_CVM\_CVM\_1888861-6\_A1.3d\_stp.zip

English

By downloading the CAD file I accept and agree to the Terms and Conditions of use.

Product Specifications

Product Specification

English