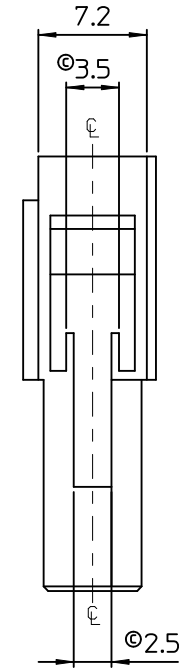
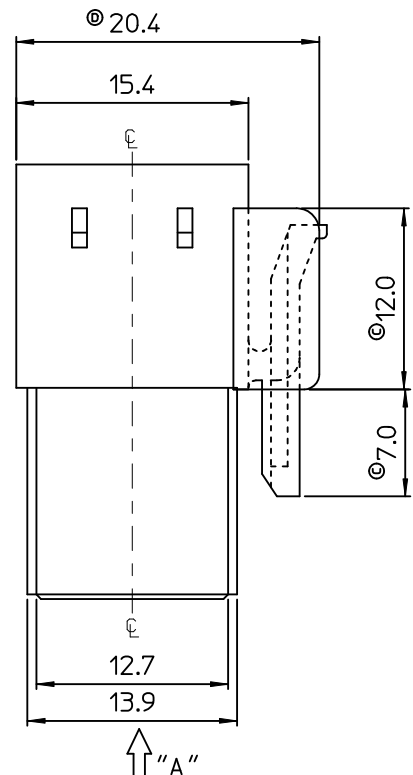
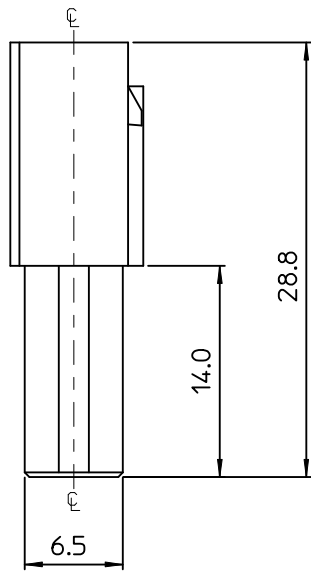


- NOTES.
1. MATERIAL & COLOR : SEE TABLE
 2. MATED HOUSING : 35180-040*
35180-060*
 3. APPLICABLE TERMINAL : 35745-0*10
 4. APPLICABLE T.P.A : 35965-029*
 5. PRODUCT SPECIFICATION : PS-35180-002



No.	PBT(UL94V-0)		PC/PET(UL94V-0)	
	MATERIAL	COLOR	MATERIAL	COLOR
1	35965-0210	NATURAL	35965-9210	NATURAL
2	35965-0212	RED	35965-9212	RED
3	35965-0213	YELLOW	35965-9213	YELLOW
4	35965-0214	BLUE	35965-9214	BLUE

REVISED	EC NO: KOR2010-0186	2010/05/17
	DRWN: JHPARK01	2010/05/17
	CHKD: SHCHU	2010/05/17
	APPR: YUNS IKKIM	2010/05/18
REV	DESCRIPTION	

QUALITY SYMBOLS	GENERAL TOLERANCES (UNLESS SPECIFIED)	
	mm	INCH
▽=0	4 PLACES ± ---	± ---
▽=0	3 PLACES ± ---	± ---
	2 PLACES ± ---	± ---
	1 PLACE ± 0.3	± ---
	ANGULAR ± 1°	
	DRAFT WHERE APPLICABLE MUST REMAIN WITHIN DIMENSIONS	

DIMENSION STYLE MM ONLY		SCALE 3:1	DESIGN UNITS METRIC	THIRD ANGLE PROJECTION
DRAWN BY JS. KANG	DATE 1995/09/28	TITLE 070 MULTI FEMALE HSG 2P(B)		
CHECKED BY BK. CHOI	DATE 1995/09/28	MOLEX INCORPORATED		
APPROVED BY CW. LEE	DATE 1995/09/28	MATERIAL NO. SEE TABLE	DOCUMENT NO. SD-35965-021*	SHEET NO. 1 OF 01
THIS DRAWING CONTAINS INFORMATION THAT IS PROPRIETARY TO MOLEX INCORPORATED AND SHOULD NOT BE USED WITHOUT WRITTEN PERMISSION				