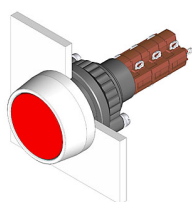


# EAO – Your Expert Partner for Human Machine Interfaces

## 14-273.0252 - Illuminated pushbutton actuator

### 14-273.0252 - Illuminated pushbutton actuator



*Attention: The preview is based on a sample product. This can differ from your current configuration.*

#### Mounting

Mounting cut-out	Ø 22.5 mm
Design	raised

#### Other Attributes

Weight	0.017 kg
Diode 1N4007	no value

#### IP-Rating

Front protection	IP 67
------------------	-------

#### Connection Method

Terminal	Solder
----------	--------

#### Actuator

Switching action	Maintained
------------------	------------

#### Switching element

Switching system	Snap-action switching element
Switching current	5 A
Contacts	3 NC + 3 NO
Contact material	Gold
Switching voltage	250 V AC

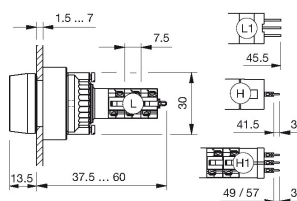
#### Function

Illuminated pushbutton
------------------------

# EAO – Your Expert Partner for Human Machine Interfaces

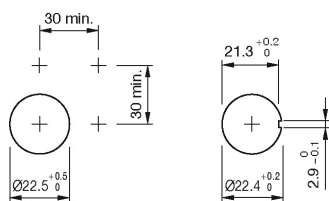
14-273.0252 - Illuminated pushbutton actuator

## Dimensions

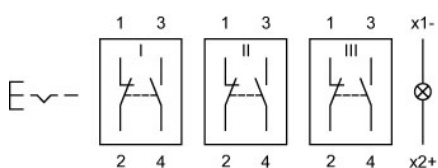


L = Solder terminal

## Mounting cut-outs



## Wiring diagram



## Legend

Contacts: NC = Normally closed, NO = Normally open  
Switching action: C = Maintained