

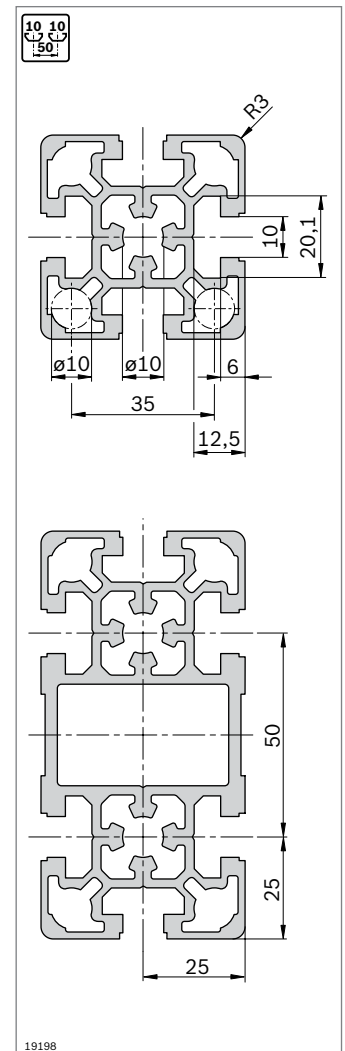
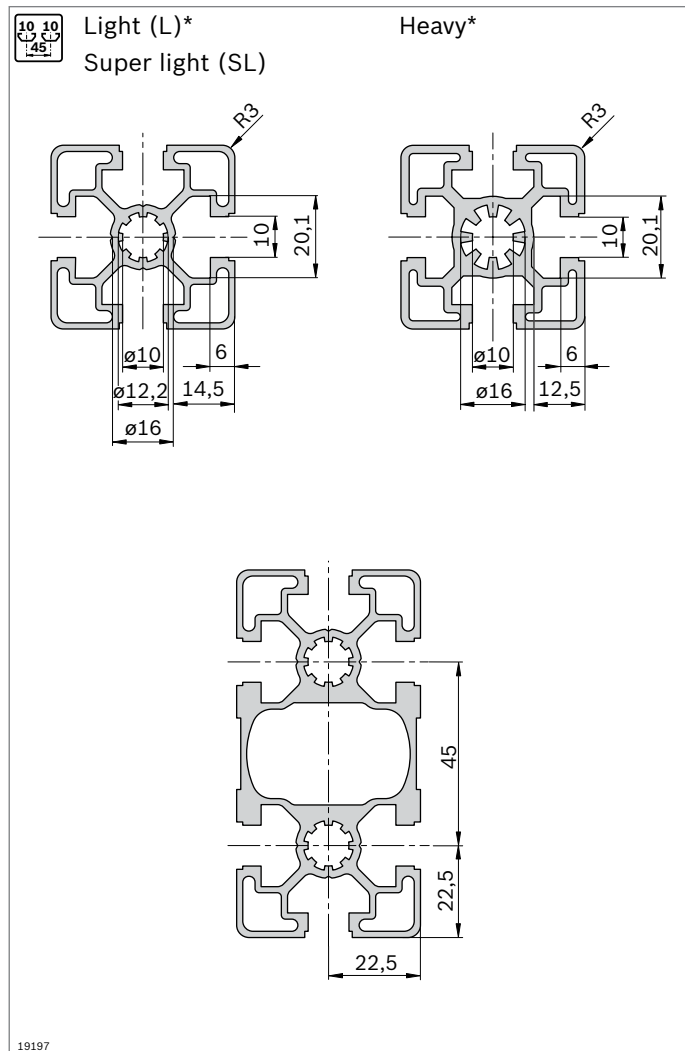
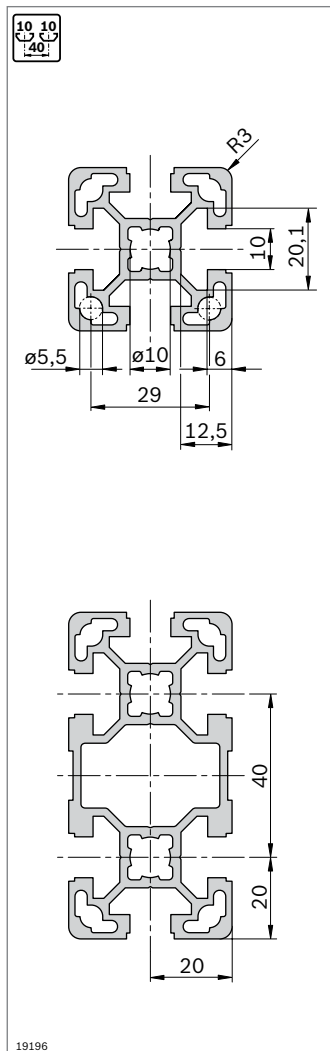
Strut profiles with 10 mm slot

The Rexroth modular profile system, with 10 mm slots in the modular dimensions 40 mm, 45 mm, 50 mm, and 60 mm, covers all conventional profile dimensions on the world market.

45 mm, and 50 mm, e.g. 50x50L) combine high strengths with minimum use of materials. This gives you a cost-effective and stable solution for the construction of tables, protection devices or frames, for instance.

Thanks to their computer-optimized design, the strut profiles L with 10 mm slot (modular dimensions 40 mm,

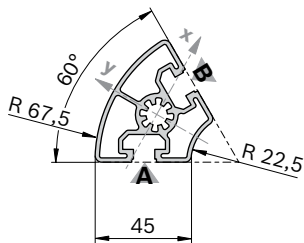
Slot, modular dimensions, central bore



*) The following L-profiles have a "heavy" slot geometry:
45x90x90L; 45x90x90L 4N; 90x90L; 90x90L 4N; 90x90L 4NVS; 90x180L

45x60°

A = 6,8 cm²
 I_x = 11,4 cm⁴
 I_y = 16,9 cm⁴
 W_x = 4,4 cm³
 W_y = 5,2 cm³
 m = 1,8 kg/m



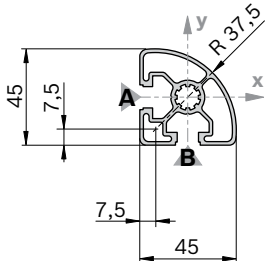
19429

Cover cap	Color	ESD	No.
45x60° (1x)	Signal gray		20 3 842 551 024
45x60° (1x)	Black		20 3 842 551 025

Material: PP

45x45L R

A = 4,9 cm²
 I_x = 8,6 cm⁴
 I_y = 8,6 cm⁴
 W_x = 5,0 cm³
 W_y = 5,0 cm³
 m = 1,3 kg/m



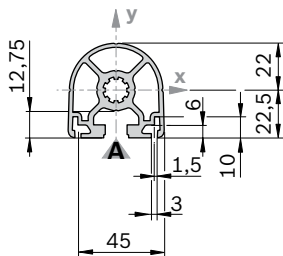
19430

Cover cap	Color	ESD	No.
45x45 R (1x)	Signal gray		20 3 842 548 800
45x45 R (1x)	Black		20 3 842 548 801

Material: PP

45x45 HR

A = 6,6 cm²
 I_x = 11,0 cm⁴
 I_y = 10,7 cm⁴
 W_x = 4,4 cm³
 W_y = 4,8 cm³
 m = 1,8 kg/m



19431

Cover cap	Color	ESD	No.
45x45 HR (1x)	Signal gray		20 3 842 548 798
45x45 HR (1x)	Black		20 3 842 548 799

Material: PP

45x60°	L (mm)	No.
1 pcs	50 ... 5600	3 842 993 015 / L
20 pcs	5600	3 842 524 046

Quick & Easy (p. 2-8, see fold-out section)

45x60°	3 842 993 744 / ...
Length L (mm)	50 ... 5600
Standard profile finishing (note minimum length, p. 2-25)	M12
Customized profile finishing	—

45x45L R	L (mm)	No.
1 pcs	50 ... 5600	3 842 992 897 / L
20 pcs	5600	3 842 517 200

Quick & Easy (p. 2-8, see fold-out section)

45x45L R	3 842 993 742 / ...
Length L (mm)	50 ... 5600
Standard profile finishing (note minimum length, p. 2-25)	M12 / DB17
Customized profile finishing	—

45x45 HR	L (mm)	No.
1 pcs	50 ... 5600	3 842 992 945 / L
1 pcs M12	60 ... 5600	3 842 993 001 / L
1 pcs M12 M12	110 ... 5600	3 842 992 999 / L
20 pcs	5600	3 842 525 505

Quick & Easy (p. 2-8, see fold-out section)

45x45 HR	3 842 993 736 / ...
Length L (mm)	50 ... 5600
Standard profile finishing (note minimum length, p. 2-25)	M12 / DB17
Customized profile finishing (L _{max} = 4900 mm)	DI / DIS / MT / MTS / MI / MIS / DG ¹⁾

¹⁾ DG_{max} = 45°; L_{min1} / L_{min2} = 378 / 456 mm