

RC-09P1N120000X - Contact insert



1240549

<https://www.phoenixcontact.com/in/products/1240549>

Please be informed that the data shown in this PDF document is generated from our online catalog. Please find the complete data in the user documentation. Our general terms of use for downloads are valid.



Contact insert, M23, number of positions: 8+1, contact connection type: Pin, Solder cup, series: NC, RC, RM, TU, UC, Item is lead-free in accordance with RoHS II without Exemption 6c (Pb < 0.1 %)

Commercial data

Item number	1240549
Packing unit	10 pc
Minimum order quantity	10 pc
Sales key	*****
Product key	ABRAFU
GTIN	4063151425678
Weight per piece (including packing)	8.51 g
Weight per piece (excluding packing)	8.51 g
Customs tariff number	85366990
Country of origin	DE

RC-09P1N120000X - Contact insert



1240549

<https://www.phoenixcontact.com/in/products/1240549>

Technical data

Product properties

Product type	Contact insert
Series	NC
	RC
	RM
	TU
	UC
Application	Signal
Number of positions	9
Connection profile	8+1
Coding	N
Thread type	M23

Electrical properties

Contact

Contact diameter	2 mm
Min. cross section	0.08 mm ²
Max. cross section	2.5 mm ²
Max. current	20 A
Nominal voltage U _N	48 V AC 74 V DC
Overvoltage category	III
Degree of pollution	3
Rated surge voltage	1.5 kV

Contact

Contact diameter	1 mm
Min. cross section	0.08 mm ²
Max. cross section	1 mm ²
Max. current	8 A

Connection data

Connection method	Solder cup
-------------------	------------

Material specifications

Insulator material	PBT
Contact material	CuZn
Contact surface	Nickel-plated, gold coating

Connector

Direction of rotation	Standard
-----------------------	----------

Mechanical properties

RC-09P1N120000X - Contact insert



1240549

<https://www.phoenixcontact.com/in/products/1240549>

Mechanical data

Insertion/withdrawal cycles	50
-----------------------------	----

RC-09P1N120000X - Contact insert

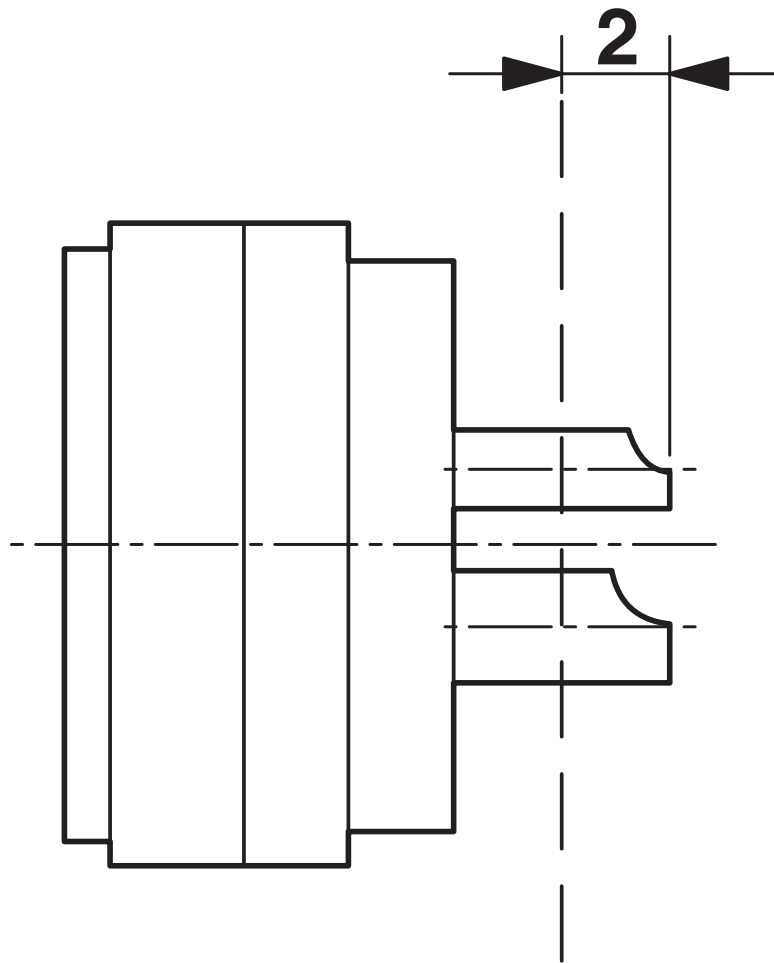


1240549

<https://www.phoenixcontact.com/in/products/1240549>

Drawings

Schematic diagram



Dimensional drawing

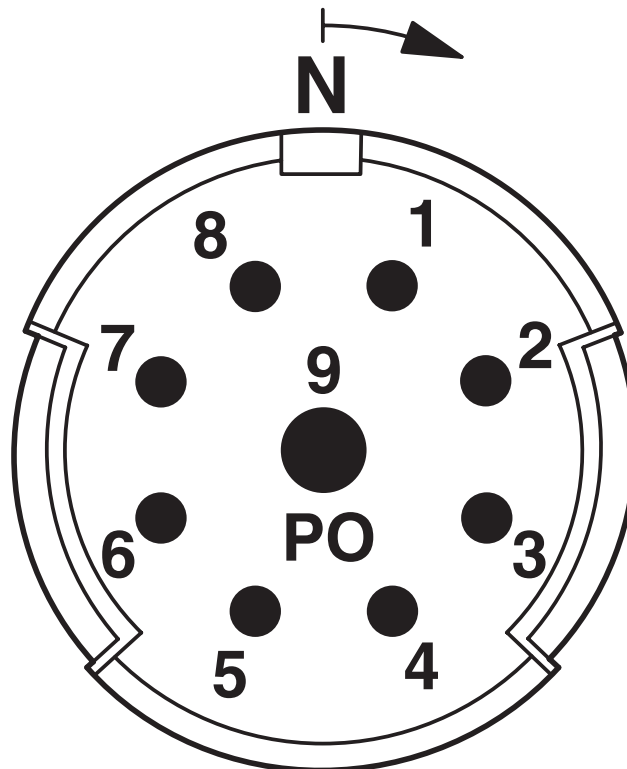
RC-09P1N120000X - Contact insert

1240549

<https://www.phoenixcontact.com/in/products/1240549>



Schematic diagram



Connector pin assignment

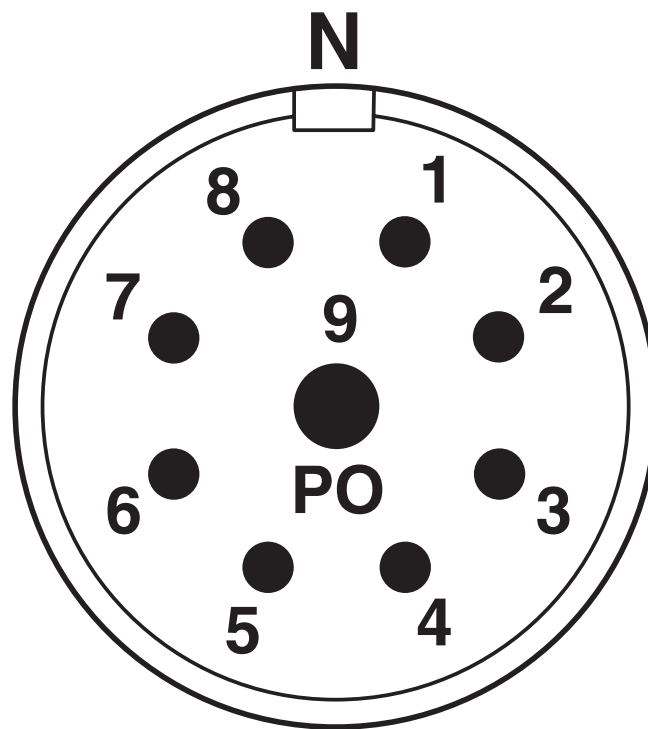
RC-09P1N120000X - Contact insert

1240549

<https://www.phoenixcontact.com/in/products/1240549>



Schematic diagram



Connector pin assignment

RC-09P1N120000X - Contact insert



1240549

<https://www.phoenixcontact.com/in/products/1240549>

Approvals

🔗 To download certificates, visit the product detail page: <https://www.phoenixcontact.com/in/products/1240549>



EAC

Approval ID: 19060508

RC-09P1N120000X - Contact insert

1240549

<https://www.phoenixcontact.com/in/products/1240549>



Classifications

ECLASS

ECLASS-11.0	27440223
ECLASS-12.0	27440223
ECLASS-13.0	27440223

ETIM

ETIM 9.0	EC003557
----------	----------

RC-09P1N120000X - Contact insert



1240549

<https://www.phoenixcontact.com/in/products/1240549>

Environmental product compliance

EU RoHS

Fulfills EU RoHS substance requirements	Yes, No exemptions
---	--------------------

China RoHS

Environment friendly use period (EFUP)	EFUP-E
	No hazardous substances above the limits

EU REACH SVHC

REACH candidate substance (CAS No.)	No substance above 0.1 wt%
-------------------------------------	----------------------------

Phoenix Contact 2025 © - all rights reserved

<https://www.phoenixcontact.com>

PHOENIX CONTACT (I) Pvt. Ltd.

A-58/2, Okhla Industrial Area, Phase - II, New Delhi-110 020

+91.1275.71420

info@phoenixcontact.co.in