

MAT Steel case and bezelring pressure gauges

Ø 40 - 50 - 63 - 80 - 100 mm

Conform to EN 837-1 standard, Pressure Directive PED 97/23/CE

Pressure gauges developed for OEM applications in compressed gases, lubricating circuits, hot or cold water networks, water distribution.



Specifications (20°C)

Ranges	From -1... 0 to 0... 400 bar. (see graduations overleaf)
Working pressure	steady : 75% of full scale value short time : 100% of full scale value
Standard accuracy	± 2.5% of full scale
Standard degree of protection	IP 32 according to NF EN 60 529.
Sensing element	Cupreous metal BOURDON tube.
Connection	Brass, with 14 mm square.
Thread	G 1/8 (MAT Ø 40) G 1/4 (MAT Ø 50, 63) G 1/2 (MAT Ø 80, 100)
Tube connection assembly	Welded : Sn/Pb up to 40 bar Sn/Ag greater than 40 bar
Gauge working Temperature	process fluid: -20 ... 70°C
Temperature error	Additional error when temperature of the pressure element deviates from +20°C (68°F) ±0.4% for every 10°C (18°F) rising or falling. Percentage of span.
Case	Black painted steel.
Bezelring	Steel bezelring crimped on case (except type F, Ø 40)
Window	Plastic (MAT Ø 80-100), Kostil (MAT Ø 40-50-63).
Dial	White ABS (MAT Ø 40-50-63 and P ≤ 40 bar) Aluminium alloy, black graduations and figures on white background (others).
Pointer	Knife-edge, aluminium alloy, black painted.

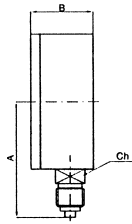
Options

Restrictor screw in connection. **Code 0771**
Male thread out of standard
Special dial
Special graduations
Other mountings.

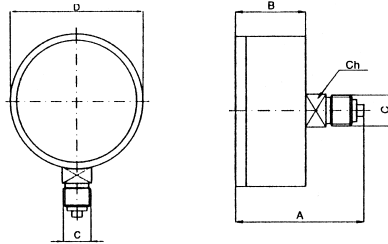
Dimensions (mm)

Ø 40, 50, 63

Type D



Type F

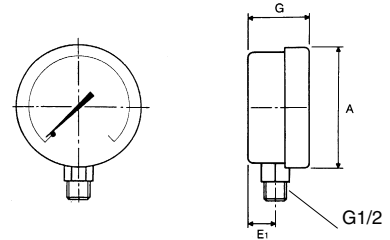


Weight Ø	Type D	Type F
40	55g	60g
50	94g	103g
63	120g	131g

Type Dimensions Ø	D/F		D	F	D/F
	D	B	A	A	C
40	42	D : 24 F : 25,5	39,5	42,5	G1/4
50	53	29	48	50,5	G1/4
63	63	D : 28 F : 28	54,5	48,5	G1/4

Ø 80, 100

Type D



TYPE	D	F	D/F
Ø	A	E1	G
80 type F	81	13	33
80 type D	81	10	30,5
100 type D	100	13,5	38,5

Weight in g

TYPE	MAT	
	4	5
80	227	360
100	250	/

Codification - MAT

		MATxxx0Bxx
Model	1'...3' digit	MAT
Pressure gauges		
Nominal diameter	4' digit	
Ø 40 mm		1
Ø 50 mm		2
Ø 63 mm		3
Ø 80 mm		4
Ø 100 mm		5
Type of mounting	5' digit	
bottom connection		D
back connection		F
Hydraulic connection	6' digit	
G 1/8 (for Ø 40)		1
G 1/4 (for Ø 50-63)		2
G 1/2 (for Ø 80 -100)		3
Liquid filling	7' digit	
Without		0
Unit of measurement	8' digit	
bar		B
Pressure range	9'...10' digit	
See codes in table		xx

code	ranges (bar)	Ø				
		40	50	63	80	100
74	-1 + 1.5					X
59	-1 + 0	X		X	X	
15	0 + 1	X	X	X	X	X
16	0 + 1.6	X	X	X	X	X
18	0 + 2.5	X	X	X	X	X
19	0 + 4	X	X	X	X	X
20	0 + 6	X	X	X	X	X
22	0 + 10	X	X	X	X	X
24	0 + 16	X	X	X	X	X
26	0 + 25	X	X	X	X	X
27	0 + 40	X	X	X	X	X
29	0 + 60	X		X	X	X
31	0 + 100	X		X	X	X
33	0 + 160	X		X	X	X
35	0 + 250	X		X	X	X
38	0 + 400					X

UK/09-2009 This data sheet may only be reproduced in full