

Distinctive Characteristics

Optional caps in different colors to vary appearance as needed.

Low operating force for ease of actuation.

Rear panel bushing mount with compact behind panel dimension.

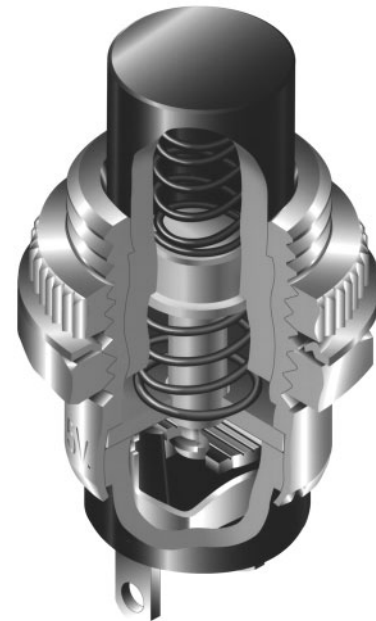
Internal antijamming feature to protect the contacts from damage due to excessive force on the plunger.

Self-cleaning contacts make FB models highly reliable.

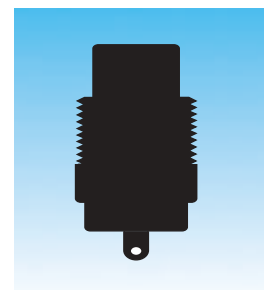
Low cost device of rugged one-piece bushing and housing construction.

Reliability of construction with an internal guide to maintain contact alignment.

Epoxy sealed terminals.



Actual Size SB



General Specifications

Electrical Capacity (Resistive Load)

Power Level: 3A @ 125V AC or 2A @ 250V AC for silver
Logic Level: 0.4VA max. @ 28V AC/DC max. for gold
 Note: See Supplement Index (page Z2) to find explanation of operating range.

Other Ratings

Contact Resistance: 10 milliohms maximum for silver;
 20 milliohms maximum for gold
Insulation Resistance: 200 megohms minimum @ 500V DC
Dielectric Strength: 1,000V AC minimum between contacts
 & between contacts & case for 1 minute minimum
Mechanical Life: 30,000 operations minimum
Electrical Life: 10,000 operations minimum
Nominal Operating Force: 500 grams
Travel: For Normally Open ~ 0.79mm (.031") Pretravel;
 1.45mm (.057") Overtravel; 2.24mm (.088") Total
 For Normally Closed ~ 0.64mm (.025") Pretravel;
 1.60mm (.063") Overtravel; 2.24mm (.088") Total

Materials & Finishes

Plunger: Phenolic resin
Bushing: Brass with nickel plating
Case: Phenolic resin
Movable Contactor: Copper with silver or gold plating
Stationary Contacts: Copper with silver or gold plating
Terminals: Copper with silver or gold plating

Environmental & Installation Data

Operating Temp Range: -10°C through +70°C (+14°F through +158°F)
Soldering Time & Temperature: 3 seconds @ 350°C or
 5 seconds @ 270°C

Standards & Certifications



UL Recognized: Models rated 3A @ 125V AC and
 2A @ 250V AC. Single pole: Momentary
 action circuit with solder lug terminations.
 UL File Number: WOYR2.E44145; add
 "/U" to end of part number to order
 UL mark on switch.



CSA Certified: SB series rated 3A @ 125V AC &
 2A @ 250V AC. Single pole: Momentary
 action circuit with solder lug terminations.
 CSA File Number: 023535-0-000; add
 "/C" to end of part number to order CSA
 mark on switch.

TYPICAL SWITCH ORDERING EXAMPLE

SB40

11NO

M

POLES & CIRCUITS

Normally Open

11NO	SPST	OFF	(ON)
-------------	------	-----	------

Normally Closed

11NC	SPST	ON	(OFF)
-------------	------	----	-------

() = Momentary

PLUNGER COLORS

No Code	Black
C	Red

CONTACT MATERIALS & RATINGS

No Code	Silver 3A @ 125 V AC or 2A @ 30V DC
G	Gold 0.4VA max. @ 28V max.

BUSHINGS

M	Metric Threaded M12 P1
H	Inch Threaded 15/32-32 NS

OPTIONAL CAPS/COLORS

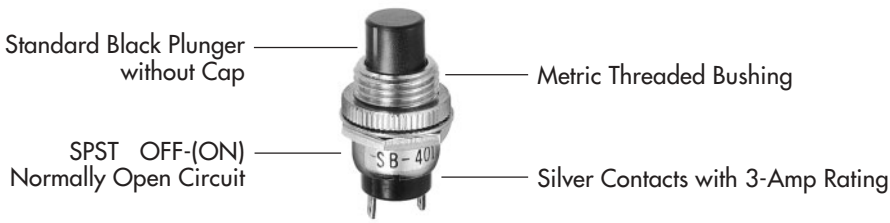
No Code	Without Cap
2A	Black
2B	White
2C	Red
2E	Yellow
2F	Green
2G	Blue

IMPORTANT:

Switches are supplied without UL & CSA marking unless specified. Specific models & ratings noted on General Specifications page.

DESCRIPTION FOR TYPICAL ORDERING EXAMPLE

SB4011NOM



POLES & CIRCUITS

() = Momentary		Plunger Position		Connected Terminals		Throw & Schematic
Pole	Model	Normal	Down	Normal	Down	Note: Terminal numbers are not actually on the switch. SPST NO NC
SP	SB4011NO	OFF	(ON)	OPEN	1-2	SPST NO NC
	SB4011NC	ON	(OFF)	OPEN	1-2	

TYPICAL SWITCH DIMENSIONS

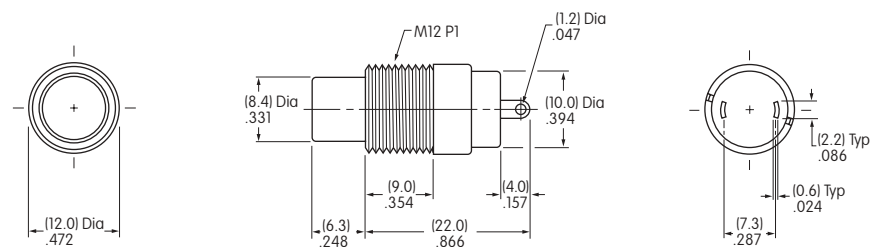
Metric Bushing



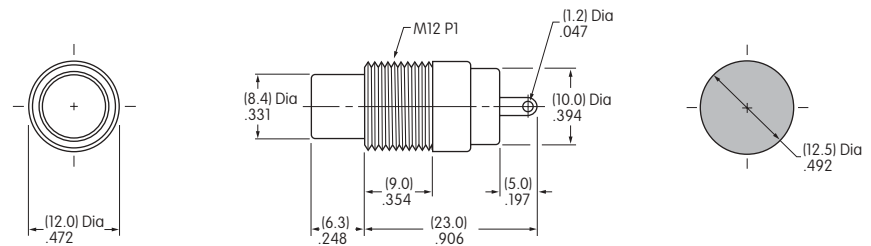
SB4011NOM

Hardware provided:
1 AT504 Knurled Face Nut;
1 AT508 Lockwasher;
1 AT527M Hex Mounting Nut

Details in Hardware & Accessories section.



SB4011NOM



SB4011NCM

.047" diameter terminal hole accommodates 1 solid 18-gauge wire.

Panel Thickness: 4.0mm (.157") maximum

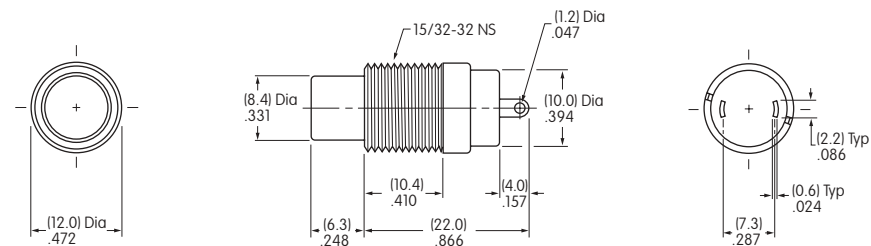
Inch Bushing



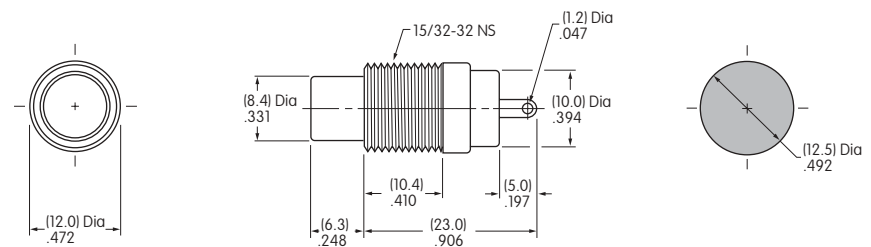
SB4011NCH

Hardware provided:
2 AT503H Hex Mounting Nuts;
1 AT508 Lockwasher

Details in Hardware & Accessories section.



SB4011NOH



SB4011NCH

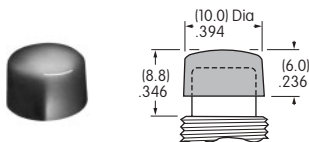
.047" diameter terminal hole accommodates 1 solid 18-gauge wire.

Panel Thickness: 4.0mm (.157") maximum

OPTIONAL SLIP-ON CAP & COLORS

AT422 .394" Diameter Cap

Material: Polyethylene
Finish: Matte



2A

Black

2C

Red

2F

Green

2B

White

2E

Yellow

2G

Blue