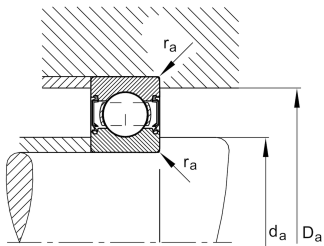
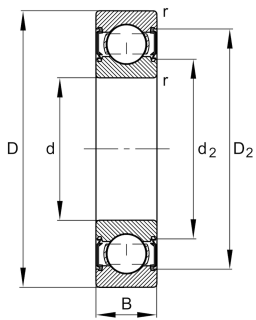


**FAG****6310-C-2HRS-C4**

Deep groove ball bearing

Deep groove ball bearing 63...-C-2HRS, single row, Generation C, seals, steel sheet metal cage

Technical information



Your current product variant

Changed internal design	C	GenerationC
Sealing	2HRS	Contact seal on both sides
Cage	JN	Steel sheet metal
Tolerance class	P6	Class6 (P6), better than PN
Dimensional / heat stabilization	S0	Rings dimensional stabilized up to 150°
Lubricant	GA13	Ball bearing and insert bearing grease, standard for D>62mm
Radial internal clearance	C4 (Group 4)	Internal clearance larger than C3
Bore type	Z	Cylindrical

Main Dimensions & Performance Data

d	50 mm	Bore diameter
D	110 mm	Outside diameter
B	27 mm	Width
C _r	68,000 N	Basic dynamic load rating, radial
C _{0r}	38,000 N	Basic static load rating, radial
C _{ur}	2,650 N	Fatigue load limit, radial
n _G	5,800 1/min	Limiting speed
≈m	1.084 kg	Weight



Mounting dimensions

$d_{a\min}$	61 mm	Minimum diameter shaft shoulder
$D_{a\max}$	99 mm	Maximum diameter of housing shoulder
$r_{a\max}$	2 mm	Maximum fillet radius

Dimensions

r_{\min}	2 mm	Minimum chamfer dimension
D_1	92.1 mm	Shoulder diameter outer ring
D_2	95.22 mm	Caliber diameter outer ring
d_1	68.64 mm	Shoulder diameter inner ring
d_2	66.74 mm	Caliber diameter inner ring

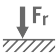

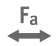



Temperature range

T_{\min}	-20 °C	Operating temperature min.
T_{\max}	100 °C	Operating temperature max.

Calculation factors

f_0	13.1	Calculation factor
-------	------	--------------------

Characteristics

	Radial load
	Axial load in one direction
	Axial load in two directions
	Lifetime lubrication, freedom from maintenance
	Grease Lubrication
	Sealed on both sides