



Connectors > PCB Connectors > Backplane Connectors > Hard Metric Backplane Connectors >

Hard Metric Male Connector: Traditional Backplane, Mezzanine, 2mm



PCB Connector Type: PCB Mount Header

Data Rate: ≤1 Gb/s

Number of Columns: 12

Number of Rows: 12

Number of Positions: 144

[All Hard Metric Male Connector: Traditional Backplane, Mezzanine, 2mm \(124\)](#)

Features

Product Type Features

|                                   |                       |
|-----------------------------------|-----------------------|
| Connector & Contact Terminates To | Printed Circuit Board |
| Connector System                  | Board-to-Board        |
| PCB Connector Type                | PCB Mount Header      |
| Sealable                          | No                    |

Configuration Features

|                       |          |
|-----------------------|----------|
| Number of Columns     | 12       |
| Number of Rows        | 12       |
| Number of Positions   | 144      |
| PCB Mount Orientation | Vertical |

Signal Characteristics

|           |         |
|-----------|---------|
| Data Rate | ≤1 Gb/s |
|-----------|---------|



Body Features

|                       |      |
|-----------------------|------|
| Primary Product Color | Gray |
|-----------------------|------|

Contact Features

|                                      |           |
|--------------------------------------|-----------|
| CompactPCI Designation               | None      |
| Contact Mating Area Plating Material | Gold (Au) |
| Contact Current Rating (Max)         | 1.5 A     |

Mechanical Attachment

|                         |             |
|-------------------------|-------------|
| Connector Mounting Type | Board Mount |
|-------------------------|-------------|

Housing Features

|                    |      |
|--------------------|------|
| Centerline (Pitch) | 2 mm |
|--------------------|------|

Operation/Application

|                     |                |
|---------------------|----------------|
| Circuit Application | Power & Signal |
|---------------------|----------------|

Packaging Features

|                  |      |
|------------------|------|
| Packaging Method | Tube |
|------------------|------|

Product Compliance

For compliance documentation, visit the product page on TE.com>

|   |   |
|---|---|
| EU RoHS Directive 2011/65/EU                  | Compliant   |
| EU ELV Directive 2000/53/EC                   | Compliant   |
| China RoHS 2 Directive MIIT Order No 32, 2016 | No Restricted Materials Above Threshold   |
| EU REACH Regulation (EC) No. 1907/2006        | Current ECHA Candidate List: JAN 2025 (247)<br>Candidate List Declared Against: JAN 2022 (223)<br>Does not contain REACH SVHC |
| Halogen Content                               | Not Low Halogen - contains Br or Cl > 900 ppm.  |
| Solder Process Capability                     | Not applicable for solder process capability  |

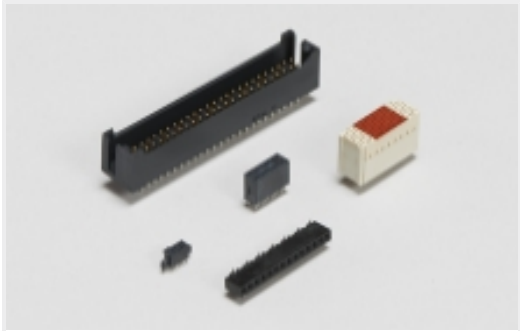
Product Compliance Disclaimer

This information is provided based on reasonable inquiry of our suppliers and represents our current actual knowledge based on the information they provided. This information is subject to change. The part numbers that TE has identified as EU RoHS compliant have a maximum concentration of 0.1% by weight in homogenous materials for lead, hexavalent chromium, mercury, PBB, PBDE, DBP, BBP, DEHP, DIBP, and 0.01% for cadmium, or qualify for an exemption to these limits as defined in the Annexes of Directive 2011/65/EU (RoHS2). Finished electrical and electronic equipment products will be CE marked as required by Directive 2011/65/EU. Components may not be CE marked. Additionally, the part numbers that TE has identified as EU ELV compliant have a maximum concentration of 0.1% by weight in homogenous materials for lead, hexavalent chromium, and mercury, and 0.01% for cadmium, or qualify for an exemption to these limits as defined in the Annexes of Directive 2000/53/EC (ELV). Regarding the REACH Regulation, the information TE provides



on SVHC in articles for this part number is based on the latest European Chemicals Agency (ECHA) ‘Guidance on requirements for substances in articles’ posted at this URL: <https://echa.europa.eu/guidance-documents/guidance-on-reach>

Also in the Series | Z-PACK 2mm HM



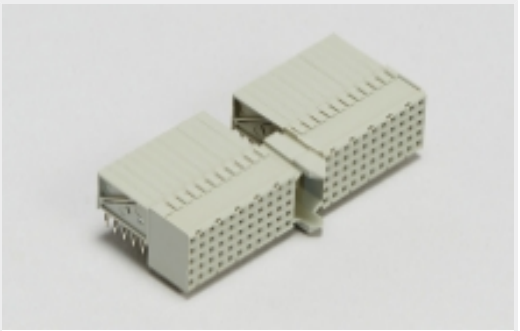
Board-to-Board Headers & Receptacles(46)



Connector Contacts(2)



Connector Hardware(91)



Hard Metric Backplane Connectors (266)



Power Contacts(2)

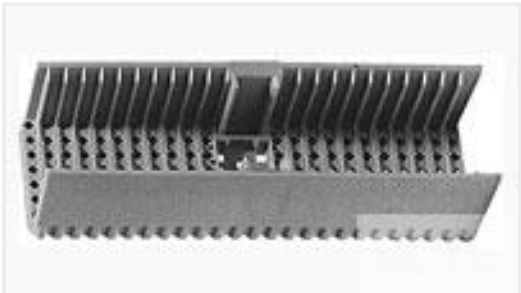


Rectangular Power Connectors(46)

Customers Also Bought



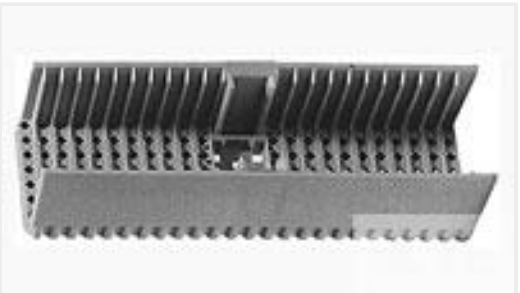
TE Part #1934304-1  
Tin Man Header Assy 4x8 Right



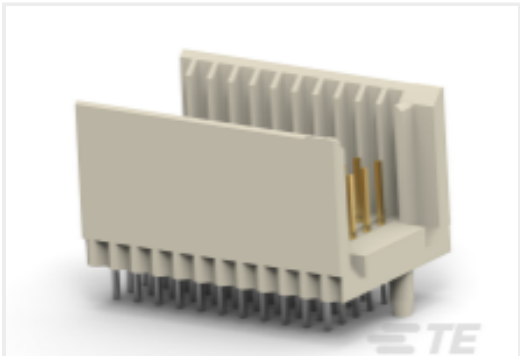
TE Part #120647-3  
2MM HM SHR/HSG RH 072P 3.00 H



TE Part #646274-1  
2MM HM PIN PWR/GRD MODULE



TE Part #120648-3  
2MM HM SHR/HSG LH 072 3.00 H



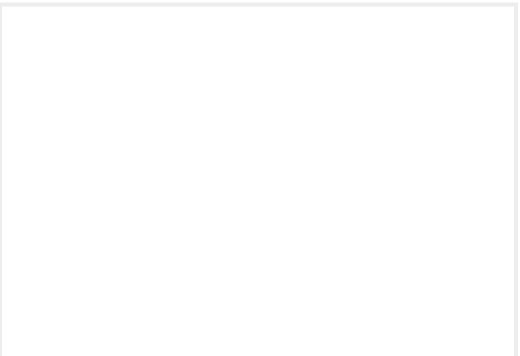
TE Part #CAT-472-Z12  
Hard Metric Male Connector:  
Traditional Backplane, Mezzanine,  
2mm



TE Part #5536019-5  
ASSY,PIN,EUROCARD,TYPE R,LEAD-FREE,96 PO



TE Part #1934306-1  
Tin man Header Assy 4x8 Double



TE Part #120646-1  
UNV PWR MDL, GUIDE PIN PLTD

Documents

- CAD Files
- Customer View Model
- ENG\_CVM\_CVM\_5120823-1\_A.2d\_dxf.zip



English

[3D PDF](#)

3D

Customer View Model

[ENG\\_CVM\\_CVM\\_5120823-1\\_A.3d\\_igs.zip](#)

English

Customer View Model

[ENG\\_CVM\\_CVM\\_5120823-1\\_A.3d\\_stp.zip](#)

English

By downloading the CAD file I accept and agree to the [Terms and Conditions](#) of use.

[Product Specifications](#)

[Application Specification](#)

English