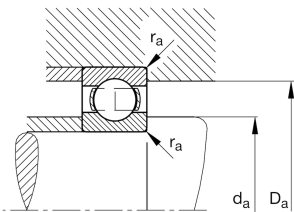
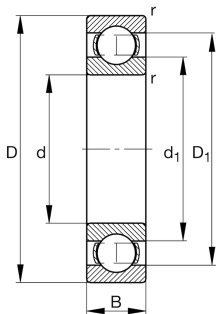


**FAG****61812-Y-C3**

## Deep groove ball bearing

Deep groove ball bearing 618...Y, single row,  
brass sheet metal cage

## Technical information



## Your current product variant

Sealing	Without	Not sealed
Cage	Y	Brass sheet metal
Tolerance class	PN	Normal (PN)
Dimensional / heat stabilization	SN	Rings dimensional stabilized up to 120°
Lubricant	Without	Bearing not greased
Radial internal clearance	C3 (Group 3)	Internal clearance larger than CN
Bore type	Z	Cylindrical

## Main Dimensions &amp; Performance Data

d	60 mm	Bore diameter
D	78 mm	Outside diameter
B	10 mm	Width
C <sub>r</sub>	12,600 N	Basic dynamic load rating, radial
C <sub>0r</sub>	11,100 N	Basic static load rating, radial
C <sub>ur</sub>	710 N	Fatigue load limit, radial
n <sub>G</sub>	15,900 1/min	Limiting speed
n <sub>gr</sub>	6,300 1/min	Reference speed
≈m	0.109 kg	Weight



Mounting dimensions

d a min	62 mm	Minimum diameter shaft shoulder
D a max	76 mm	Maximum diameter of housing shoulder
r a max	0.3 mm	Maximum fillet radius

Dimensions

r min	0.3 mm	Minimum chamfer dimension
D 1	72.55 mm	Shoulder diameter outer ring
d 1	65.6 mm	Shoulder diameter inner ring

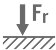





Temperature range

T min	-30 °C	Operating temperature min.
T max	120 °C	Operating temperature max.

Calculation factors

f 0	16.3	Calculation factor
-----	------	--------------------

Characteristics

	Radial load
	Axial load in one direction
	Axial load in two directions
	Grease Lubrication
	Oil Lubrication
	Not sealed