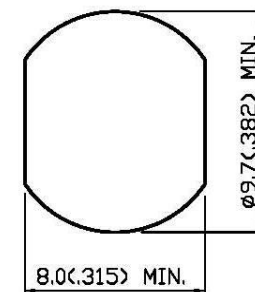
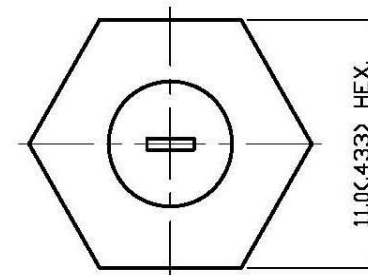
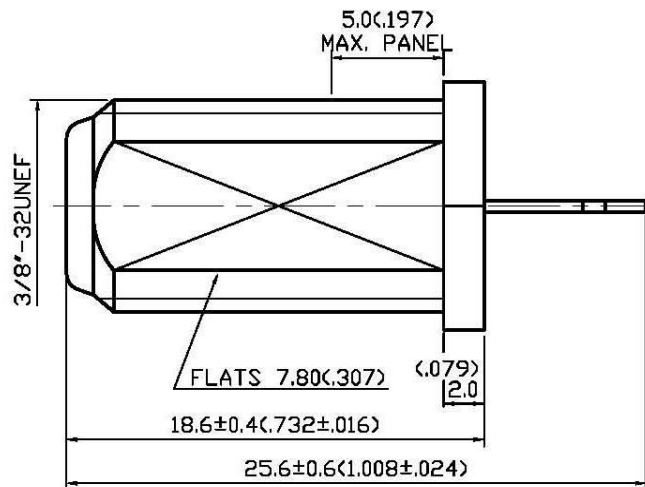
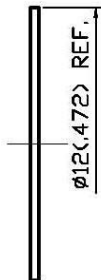
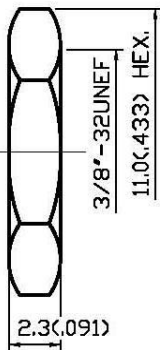


NO	DESCRIPTION	DATE
⚠	ACCESSORIES REMOVED	12.06.03
⚠	BOBBIN → PRESS PIN	09.12.06'
⚠	TIN → TIN 40μ" MIN.	02.20.08'



MOUNTING HOLE

**1.0 ELECTRICAL**

- 1.1 FREQUENCY RANGE: DC-1 GHz
- 1.2 NOMINAL IMPEDANCE: 75 OHM

**2.0 MATERIALS**

- 2.1 BODIES: BRASS PER JIS-C3604
- 2.2 CENTER CONTACT: BRASS PER JIS-C2680

**3.0 FINISHES AND OTHERS**

- 3.1 SEE BELOW TABLE FOR DETAILS.

**4.0 ENVIRONMENTAL**

- 4.1 OPERATING TEMPERATURE RANGE: -40° C TO +60° C

NO	DESCRIPTION	MATERIAL	Q'TY	FINISH
4	WASHER	BRASS	1	NICKEL
3	NUT	BRASS	1	NICKEL
2	PRESS PIN	PP+BRASS	1	TIN 40 μ" MIN.
1	BODY	BRASS	1	NICKEL 100 μ" MIN.



APPROVED by \_\_\_\_\_ DATE: \_\_\_\_\_

DESCRIPTION		F STRAIGHT BULKHEAD JACK RECEPTACLE								
製圖	DRAWN	TOLERANCE		品名	18-16-1	PP.T.N	日期	DATE	版次	REV.
	Yoko	.X	±0.2	TITLE	\ROHS COMPLIANT <math>\langle 75 \Omega \rangle</math>		03.11.93'		A-3	
檢圖	CHECK	.XX	±0.1	單位	UNIT		DWG.NO. 18-0106			
	Arc	.XXX	±0.05	比例	SCALE					
認定	APPROVAL	Jenny	ANGLE	±5°	比例		4:1			