

# CHARX PT2C-DC375-5,5MES00P - DC charging cable



1531927

<https://www.phoenixcontact.com/in/products/1531927>

Please be informed that the data shown in this PDF document is generated from our online catalog. Please find the complete data in the user documentation. Our general terms of use for downloads are valid.



CHARX connect professional, CCS type 2, HPC DC charging cable, up to 500 A in Boost mode, 375 A Permanent, 1000 V DC, with vehicle charging connector and open cable end, cable: 5.5 m, black, straight, supports four-conductor measurement technology, with analog temperature sensors, with replaceable mating face frame, with replaceable DC power contacts, with connected PP contact, PHOENIX CONTACT logo, based on IEC 62196-3, for charging electric vehicles (EV) with direct current (DC)

## Product description

DC charging cable with vehicle charging connector and free cable end for fast charging of electric vehicles (EV) with direct current (DC) via CCS type 2 vehicle charging inlets, for installation at charging stations for e-mobility (EVSE)

## Your advantages

- Complete product range
- The right charging cable for every application, from the carport to the charging park
- Ultra-fast HPC charging with up to 375 kW without liquid cooling
- Robust and durable connector design for maximum availability
- Highest level of safety with two-chamber sealing system for the separation of DC+ and DC-
- Safe against overheating with temperature measurement at every DC power contact
- Prepared for four-conductor measurement technology, enabling simple billing compliant with calibration laws
- Fast and cost-effective maintenance with exchangeable mating face including for the power contacts
- Available with your logo on request - for consistent branding of your charging station
- Developed and produced in accordance with the IATF 16949 automotive standard and ISO 9001

## Commercial data

Item number	1531927
Packing unit	10 pc
Minimum order quantity	10 pc
Product key	XWBAAD
GTIN	4067923001015
Weight per piece (including packing)	16.98 kg
Weight per piece (excluding packing)	16.98 kg
Country of origin	PL

# CHARX PT2C-DC375-5,5MES00P - DC charging cable



1531927

<https://www.phoenixcontact.com/in/products/1531927>

## Technical data

### Product properties

Product type	DC charging cable
Product family	CHARX connect professional
Application	for charging electric vehicles (EV) with direct current (DC) for installation at charging stations for electromobility (EVSE)
Type	HPC DC charging cable with vehicle charging connector and open cable end
Design	supports four-conductor measurement technology with analog temperature sensors with replaceable mating face frame with replaceable DC power contacts with connected PP contact
Technology	Combined Charging System
Affixed logo	PHOENIX CONTACT logo
Charging standard	CCS type 2
Charging mode	Mode 4

### Electrical properties

Type of signal transmission	Pulse width modulation with modulated Powerline communication in accordance with ISO/IEC 15118 / DIN SPEC 70121
Note on the connection method	Crimp connection, cannot be disconnected
Coding	1500 $\Omega$ (between PE and PP) PP signal contact connected to cable
Temperature monitoring	2x Pt 1000
Type of charging current	DC
Charging power	375 kW
Charging current	375 A DC
Type of charging current	DC Boost Mode
Charging power	up to 500 kW (Boost Mode, depending on the ambient conditions. For detailed information, see the packing slip in the download area for this item.)
Charging current	up to 500 A DC

### Power contact

Number	3 (PE, DC+, DC-)
Rated voltage	1000 V DC
Rated current	375 A (up to 40 °C)

### Signal contact

Number	2 (CP, PP)
Rated voltage	30 V AC
Rated current	2 A

# CHARX PT2C-DC375-5,5MES00P - DC charging cable



1531927

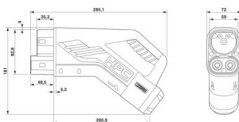
<https://www.phoenixcontact.com/in/products/1531927>

## Temperature sensors (Pt 1000)

Sensor type	Pt 1000
Standards/regulations	DIN EN 60751
Attachment point	2 sensors for the DC contacts
Switch-off temperature	90 °C

## Dimensions

### Vehicle charging connector

Dimensional drawing	
Width	72 mm
Height	181.1 mm
Depth	285.3 mm

## Material specifications

Color (Housing)	black (9005)
Color (Handle area)	black (9005)
Color (Mating face)	black (9005)
Color (Cable)	black (9005)
Material (Vehicle charging connector)	Plastic
Material (Cable outer sheath)	TPE-U
Material (Contact surface)	Silver
Flammability rating according to UL 94	V0 (Mating face)

## Cable/line

Cable length	5.5 m ±50 mm
Wiring standards/regulations	IEC 62893-4-1
Cable weight	3360.00 kg/km
Cable type	Class 6
Cable type	straight
Cable structure	4 x 50 mm <sup>2</sup> + 1 x 25 mm <sup>2</sup> + 2 x 0.75 mm <sup>2</sup> + 6 x 0.5 mm <sup>2</sup>
External cable diameter	38.00 mm
Stripping length of the sheath	180 mm ±10 mm
Stripping length	180 mm ±10 mm
Cable resistance	≤ 0.000355 Ω/m
Bending radius	380 mm ±1 mm (10 x D)

## Mechanical properties

### Mechanical data

Insertion/withdrawal cycles	> 10000
-----------------------------	---------

# CHARX PT2C-DC375-5,5MES00P - DC charging cable



1531927

<https://www.phoenixcontact.com/in/products/1531927>

Insertion force	< 100 N
Withdrawal force	< 100 N

## Environmental and real-life conditions

### Ambient conditions

Degree of protection (Vehicle charging connector)	IP54 (plugged in; when plugged in and ready to operate, the degree of protection is only ensued if both plug-in components are original products from Phoenix Contact or suitable standard-compliant products)
Ambient temperature (operation)	-30 °C ... 40 °C max. 55 °C (Current reduction required, observe the DC contact temperature limit value of 90°C)
Ambient temperature (storage/transport)	-40 °C ... 80 °C
Altitude	max. 5000 m (above sea level)

## Standards and regulations

### Standards

Standards/regulations	based on IEC 62196-3
-----------------------	----------------------

CHARX PT2C-DC375-5,5MES00P - DC charging cable

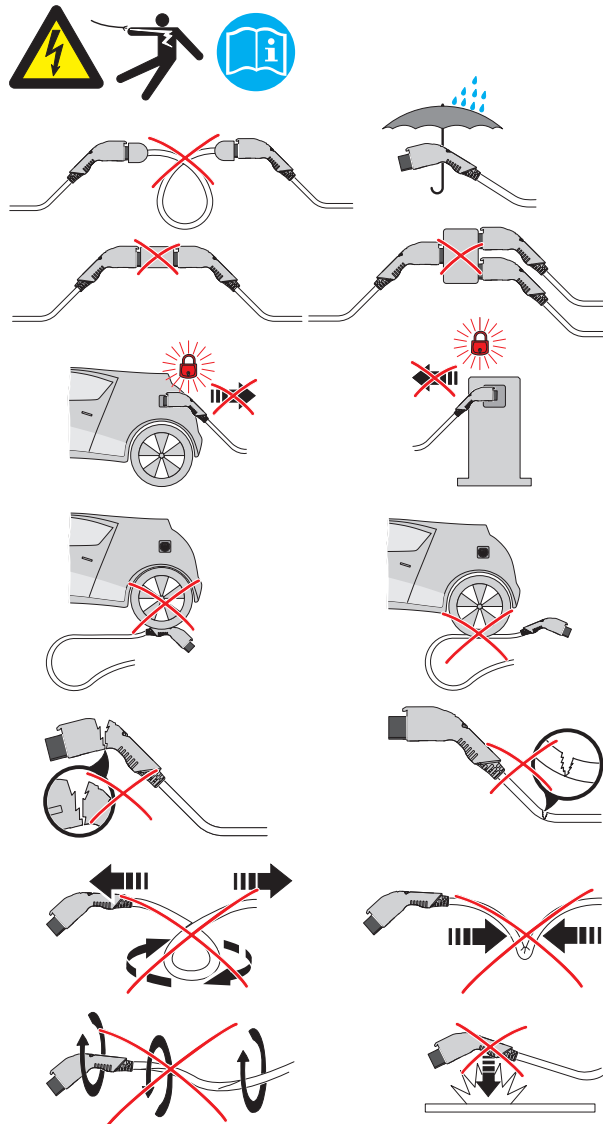


1531927

<https://www.phoenixcontact.com/in/products/1531927>

## Drawings

### Schematic diagram



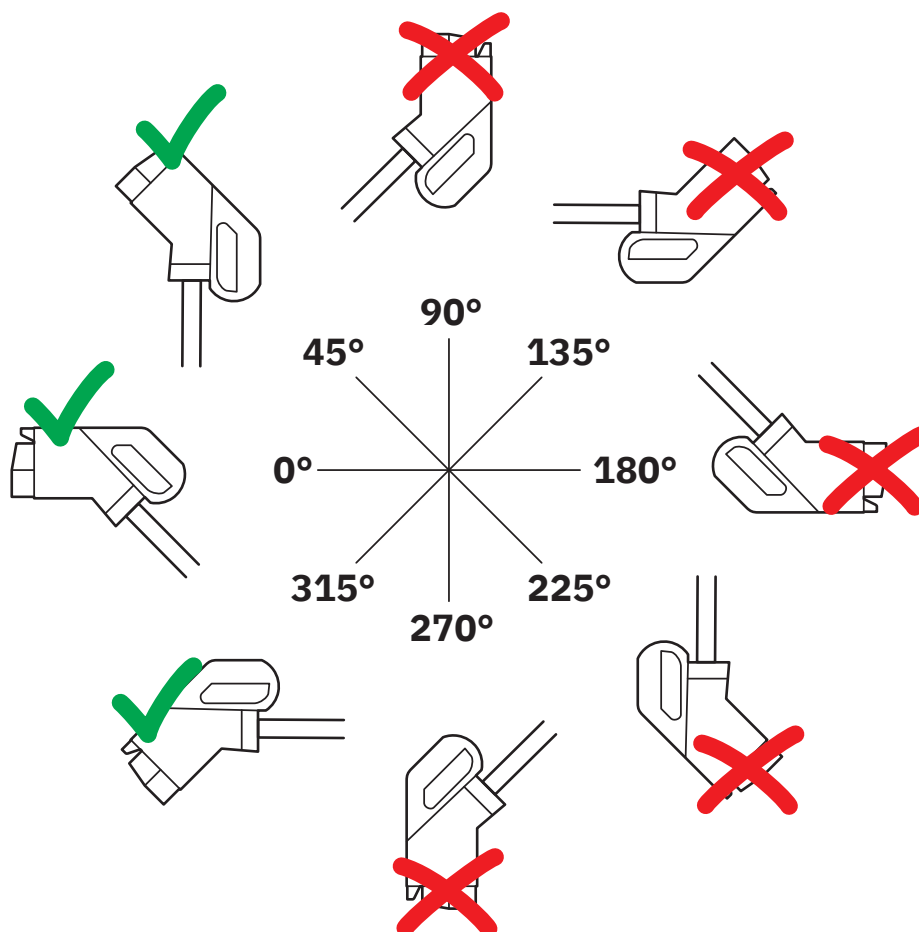
### Warnings regarding use

# CHARX PT2C-DC375-5,5MES00P - DC charging cable

1531927

<https://www.phoenixcontact.com/in/products/1531927>

Schematic diagram



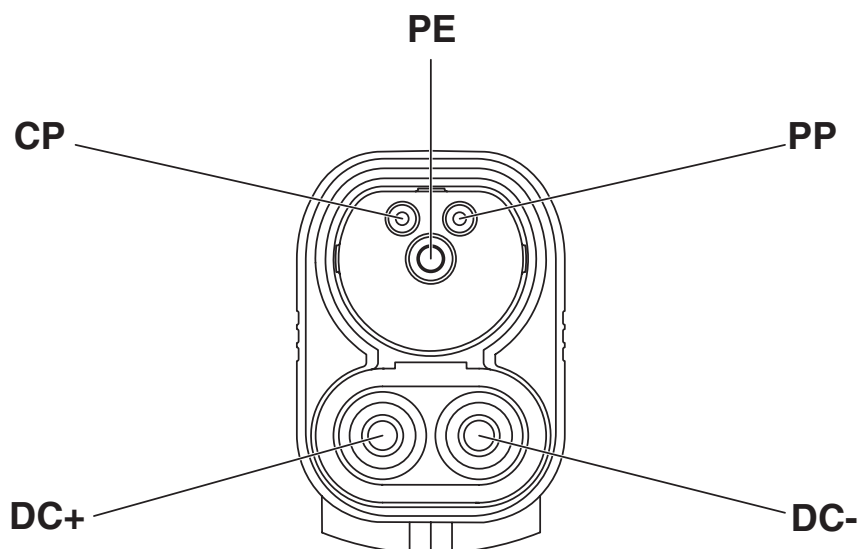
The resting position must be installed in the charging station such that the user cannot hang up the vehicle connector upside down (90° to 270°). However, positions rotated upward (45°) or downward (315°) are options for a resting position.

# CHARX PT2C-DC375-5,5MES00P - DC charging cable

1531927

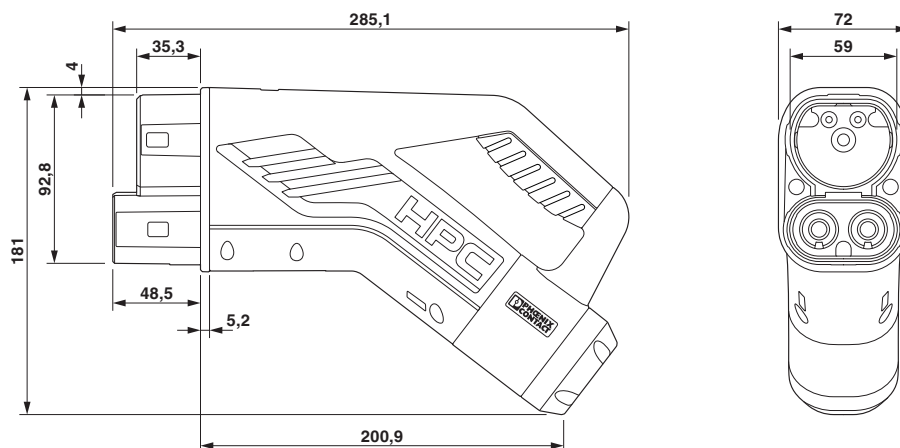
<https://www.phoenixcontact.com/in/products/1531927>

Schematic diagram

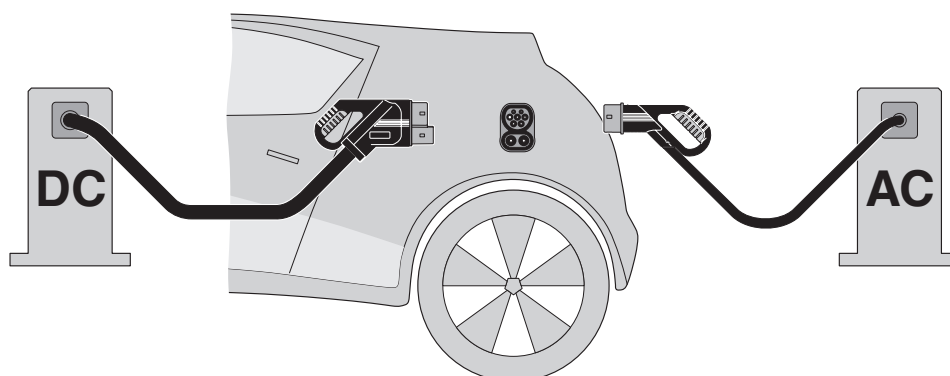


Pin assignment of the Vehicle Connector

Dimensional drawing



Schematic diagram



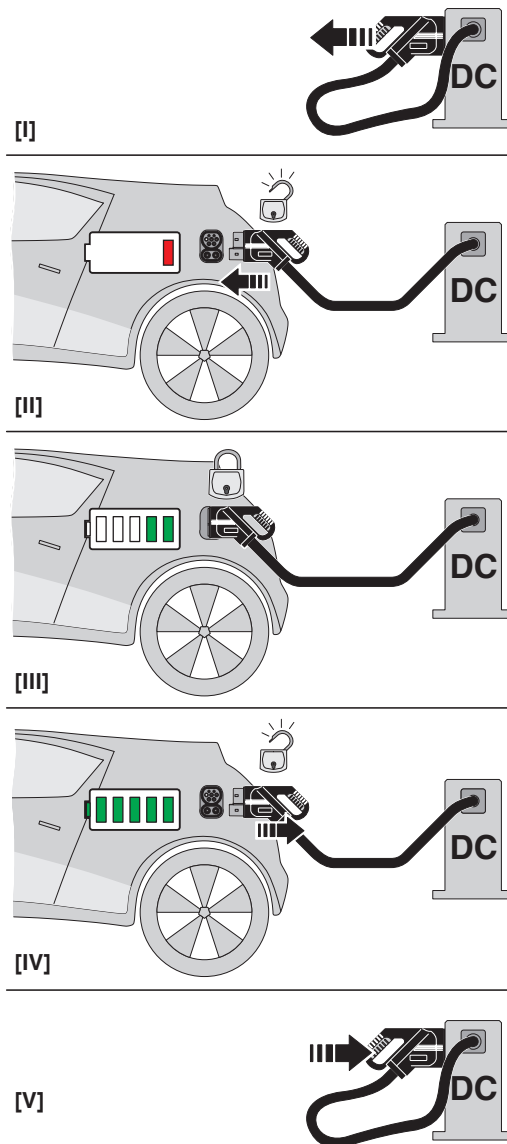
The Combined Charging System (CCS) principle - standard-compliant charging system for electric vehicles, which supports both conventional AC charging and fast DC charging. Both Vehicle Connectors fit into the CCS Vehicle Inlet.

# CHARX PT2C-DC375-5,5MES00P - DC charging cable

1531927

<https://www.phoenixcontact.com/in/products/1531927>

Schematic diagram



Operating instructions




# CHARX PT2C-DC375-5,5MES00P - DC charging cable



1531927  
<https://www.phoenixcontact.com/in/products/1531927>

## Approvals

To download certificates, visit the product detail page: <https://www.phoenixcontact.com/in/products/1531927>

	<b>IECEE CB Scheme</b> Approval ID: JPTUV-161991			
	Nominal voltage $U_N$	Nominal current $I_N$	Cross section AWG	Cross section $\text{mm}^2$
	1000 V	375 A	-	-

# CHARX PT2C-DC375-5,5MES00P - DC charging cable



1531927

<https://www.phoenixcontact.com/in/products/1531927>

## Classifications

### ECLASS

ECLASS-11.0	27144705
ECLASS-12.0	27144705
ECLASS-13.0	27144705

### ETIM

ETIM 9.0	EC002897
----------	----------

# CHARX PT2C-DC375-5,5MES00P - DC charging cable



1531927  
<https://www.phoenixcontact.com/in/products/1531927>

## Environmental product compliance

EU RoHS	
Fulfills EU RoHS substance requirements	Yes, No exemptions
China RoHS	
Environment friendly use period (EFUP)	EFUP-E
	No hazardous substances above the limits
EU REACH SVHC	
REACH candidate substance (CAS No.)	Dodecamethylcyclohexasiloxane(CAS: 540-97-6)
SCIP	123a7391-736c-47a8-9f27-5300e028758c

# CHARX PT2C-DC375-5,5MES00P - DC charging cable



1531927

<https://www.phoenixcontact.com/in/products/1531927>

## Accessories

### G-INS-M63-L68L-PNES-GY - Cable gland

1411130

<https://www.phoenixcontact.com/in/products/1411130>



Cable gland, material for screw connection: PA, application: Standard, external cable diameter 34 mm ... 44 mm, shielding: no, connecting thread: M63 x 1.5, color: silver-gray RAL 7001

---

### G-INS-M63-L68N-NNES-S - Cable gland

1411169

<https://www.phoenixcontact.com/in/products/1411169>



Cable gland, material for screw connection: Brass, nickel-plated, application: Standard, external cable diameter 34 mm ... 44 mm, shielding: no, connecting thread: M63 x 1.5, color: silver, with O-ring

---

Phoenix Contact 2025 © - all rights reserved

<https://www.phoenixcontact.com>

PHOENIX CONTACT (I) Pvt. Ltd.

A-58/2, Okhla Industrial Area, Phase - II, New Delhi-110 020

+91.1275.71420

[info@phoenixcontact.co.in](mailto:info@phoenixcontact.co.in)