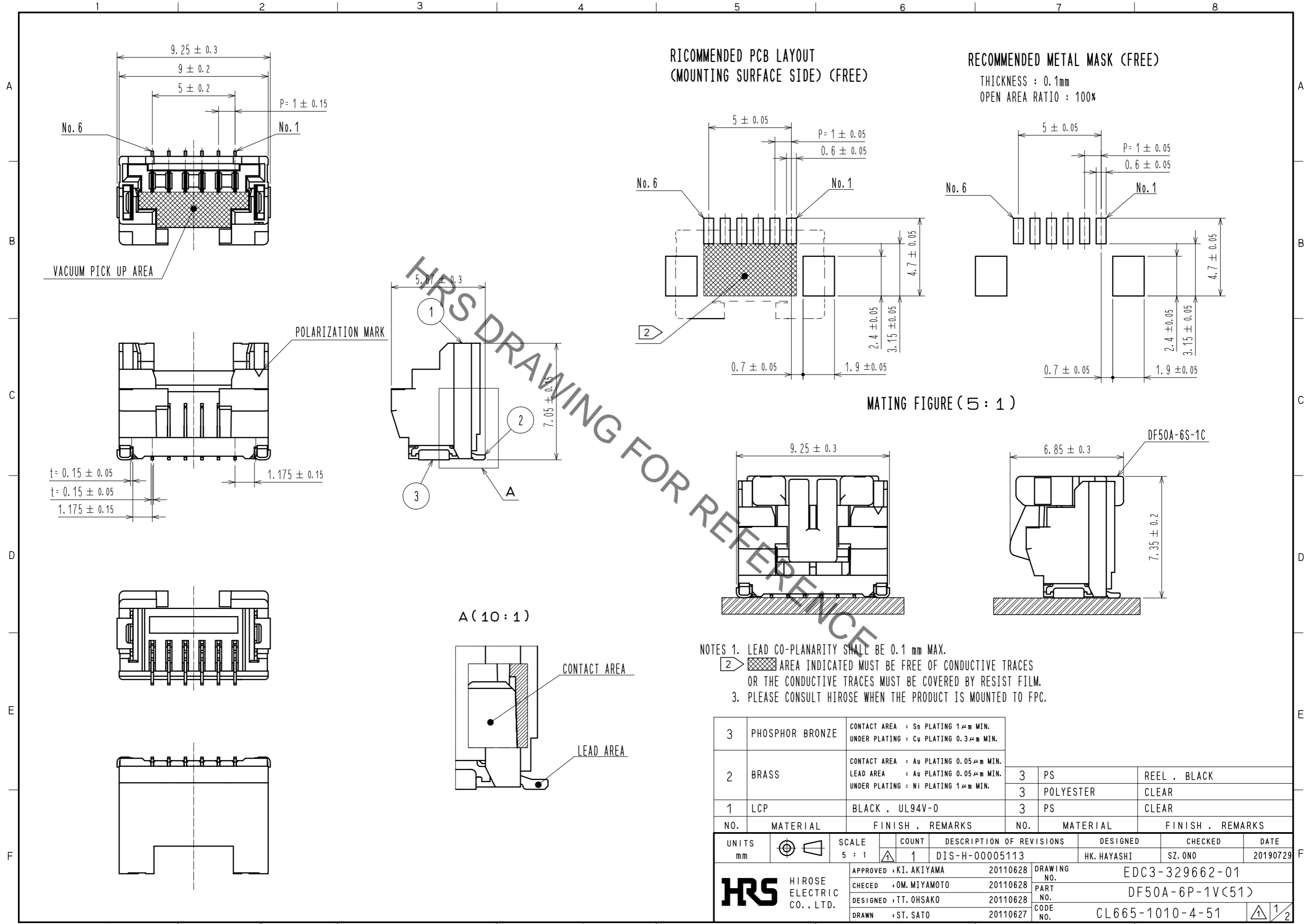


Sep.1.2019 Copyright 2019 HIROSE ELECTRIC CO., LTD. All Rights Reserved.  
In case of consideration for using Automotive equipment / device which demand high reliability, kindly contact our sales window correspondents.



RICOMMENDED PCB LAYOUT  
(MOUNTING SURFACE SIDE) (FREE)

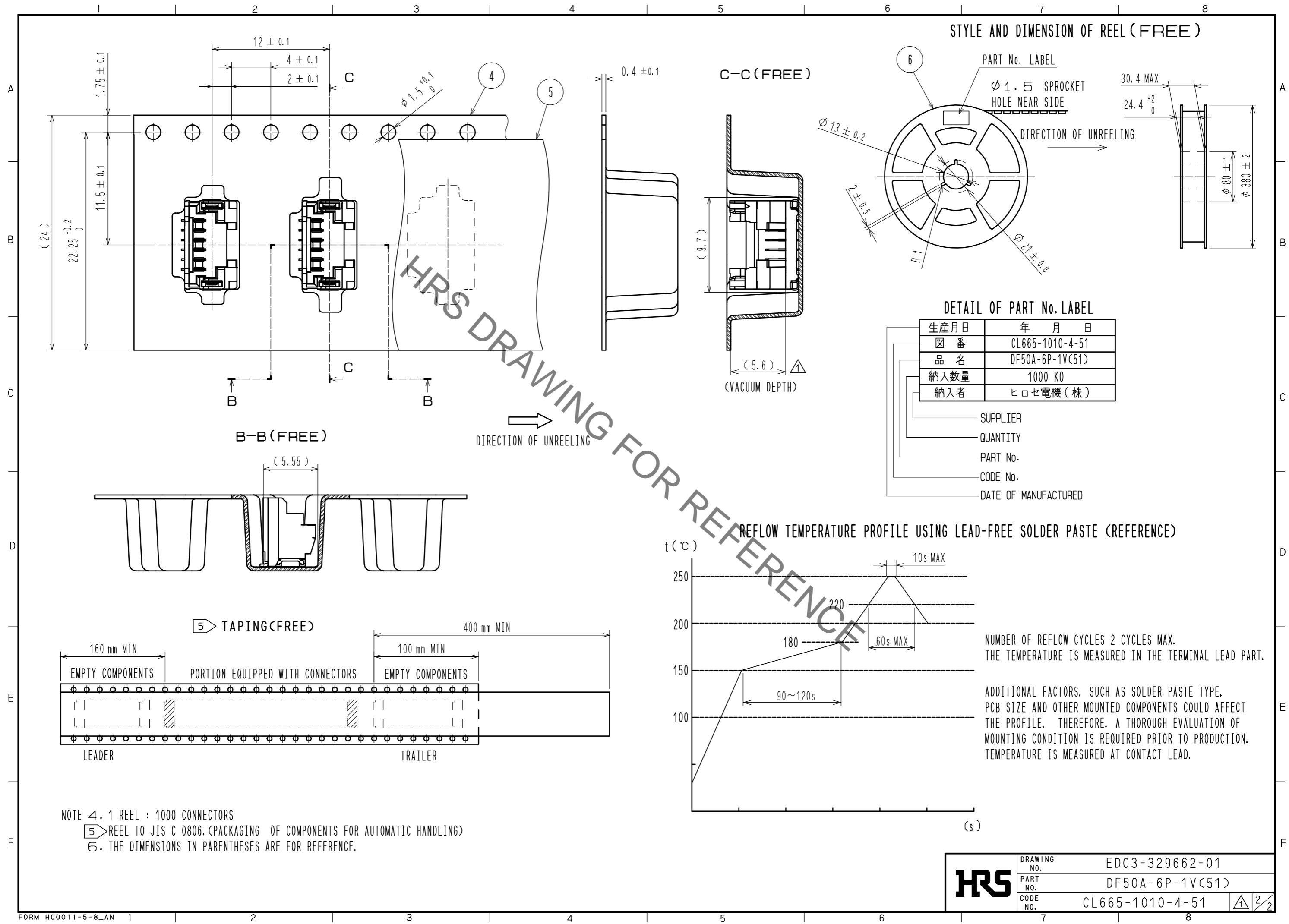
RECOMMENDED METAL MASK (FREE)  
THICKNESS : 0.1mm  
OPEN AREA RATIO : 100%

MATING FIGURE (5 : 1)

- NOTES 1. LEAD CO-PLANARITY SHALL BE 0.1 mm MAX.  
2. AREA INDICATED MUST BE FREE OF CONDUCTIVE TRACES OR THE CONDUCTIVE TRACES MUST BE COVERED BY RESIST FILM.  
3. PLEASE CONSULT HIROSE WHEN THE PRODUCT IS MOUNTED TO FPC.

3	PHOSPHOR BRONZE	CONTACT AREA : Sn PLATING 1μm MIN. UNDER PLATING : Cu PLATING 0.3μm MIN.	3	PS	REEL . BLACK
2	BRASS	CONTACT AREA : Au PLATING 0.05μm MIN. LEAD AREA : Au PLATING 0.05μm MIN. UNDER PLATING : Ni PLATING 1μm MIN.	3	POLYESTER	CLEAR
1	LCP	BLACK . UL94V-0	3	PS	CLEAR
NO.	MATERIAL	FINISH . REMARKS	NO.	MATERIAL	FINISH . REMARKS
UNITS		SCALE	COUNT	DESCRIPTION OF REVISIONS	
mm		5 : 1	1	DIS-H-00005113	
APPROVED : KI. AKIYAMA		20110628	DRAWING NO. EDC3-329662-01		
CHECKED : OM. MIYAMOTO		20110628	PART NO. DF50A-6P-1V(51)		
DESIGNED : TT. OHSAKO		20110628	CODE NO. CL665-1010-4-51		
DRAWN : ST. SATO		20110627	1/2		
HRS HIROSE ELECTRIC CO., LTD.			DESIGNED : HK. HAYASHI		
			CHECKED : SZ. ONO		
			DATE : 20190729		

Sep.1.2019 Copyright 2019 HIROSE ELECTRIC CO., LTD. All Rights Reserved.  
 In case of consideration for using Automotive equipment / device which demand high reliability, kindly contact our sales window correspondents.



STYLE AND DIMENSION OF REEL (FREE)

PART No. LABEL

Φ 1.5 SPROCKET HOLE NEAR SIDE

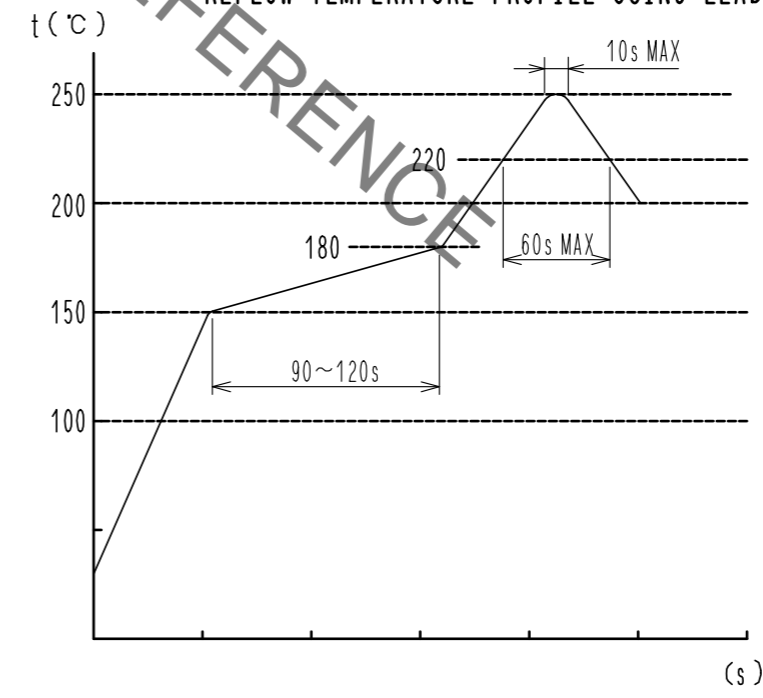
DIRECTION OF UNREELING

DETAIL OF PART No. LABEL

生産月日	年 月 日
図 番	CL665-1010-4-51
品 名	DF50A-6P-1V(51)
納入数量	1000 KO
納入者	ヒロセ電機(株)

- SUPPLIER
- QUANTITY
- PART No.
- CODE No.
- DATE OF MANUFACTURED

REFLOW TEMPERATURE PROFILE USING LEAD-FREE SOLDER PASTE (REFERENCE)



NUMBER OF REFLOW CYCLES 2 CYCLES MAX.  
 THE TEMPERATURE IS MEASURED IN THE TERMINAL LEAD PART.

ADDITIONAL FACTORS, SUCH AS SOLDER PASTE TYPE, PCB SIZE AND OTHER MOUNTED COMPONENTS COULD AFFECT THE PROFILE. THEREFORE, A THOROUGH EVALUATION OF MOUNTING CONDITION IS REQUIRED PRIOR TO PRODUCTION. TEMPERATURE IS MEASURED AT CONTACT LEAD.

NOTE 4. 1 REEL : 1000 CONNECTORS  
 5 REEL TO JIS C 0806. (PACKAGING OF COMPONENTS FOR AUTOMATIC HANDLING)  
 6. THE DIMENSIONS IN PARENTHESES ARE FOR REFERENCE.

<b>HRS</b>	DRAWING NO.	EDC3-329662-01
	PART NO.	DF50A-6P-1V(51)
	CODE NO.	CL665-1010-4-51
		2/2