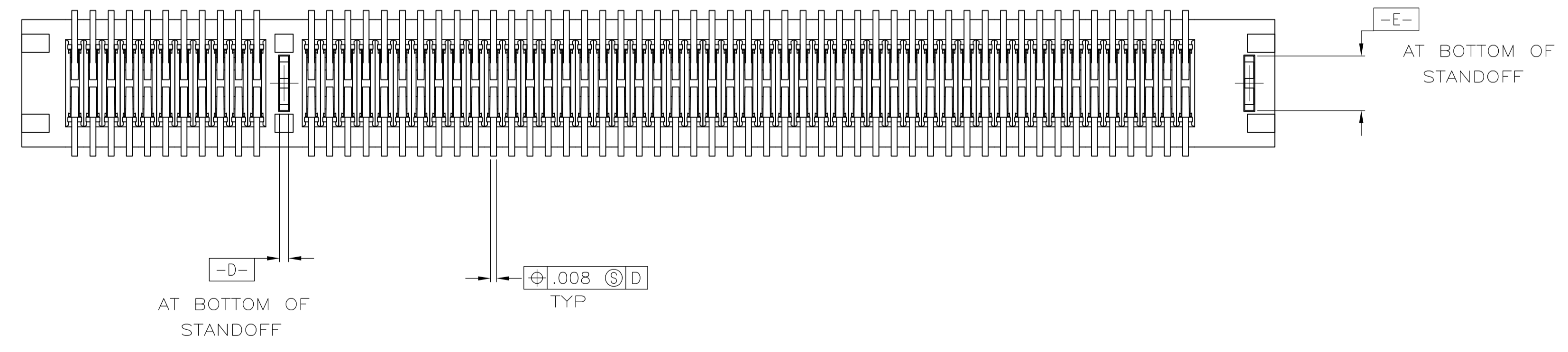
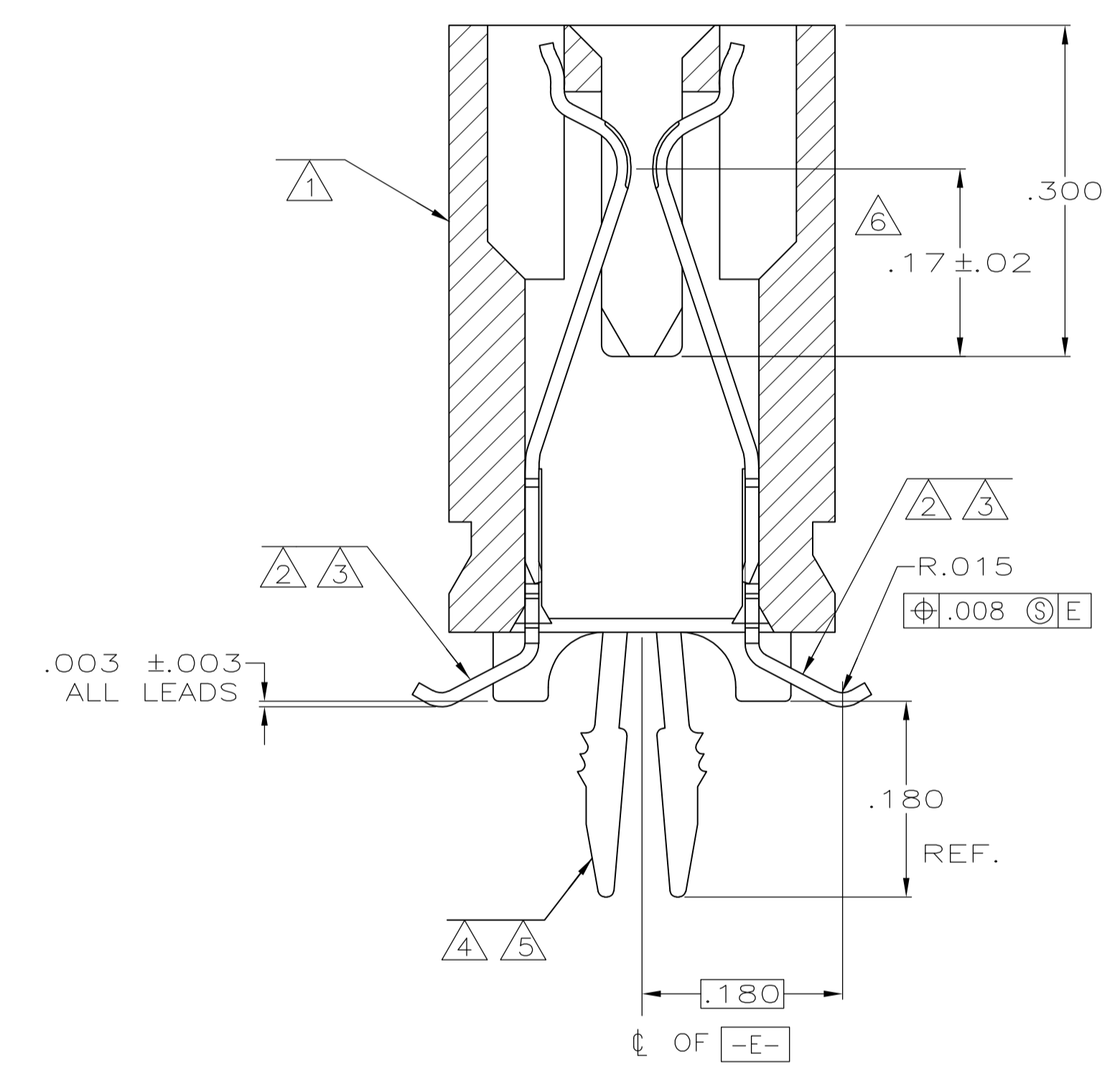
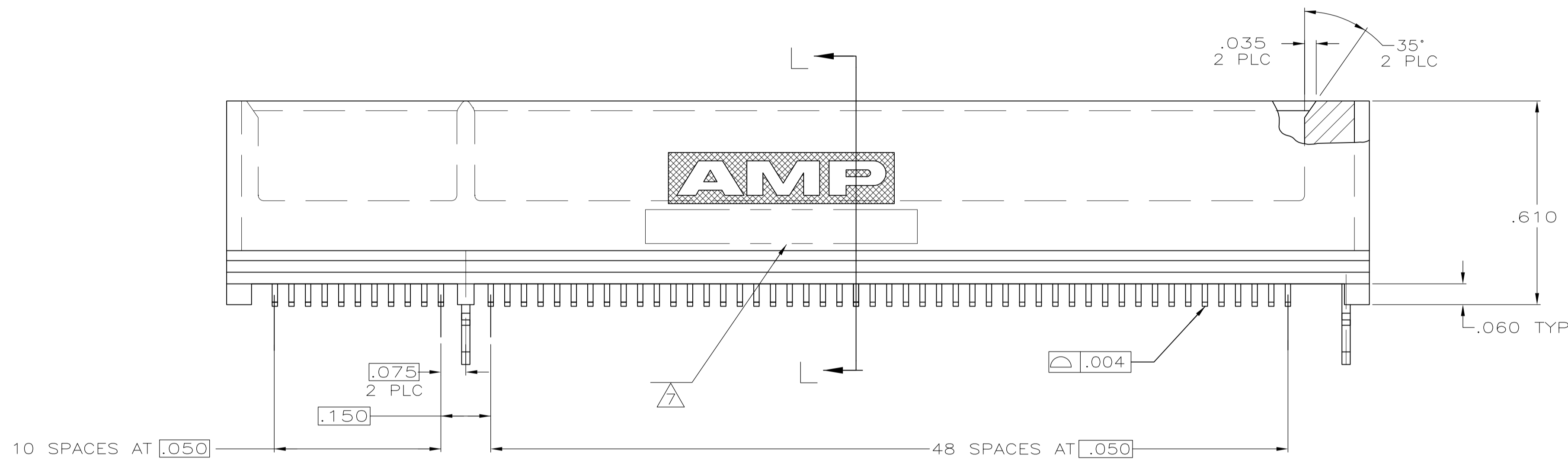


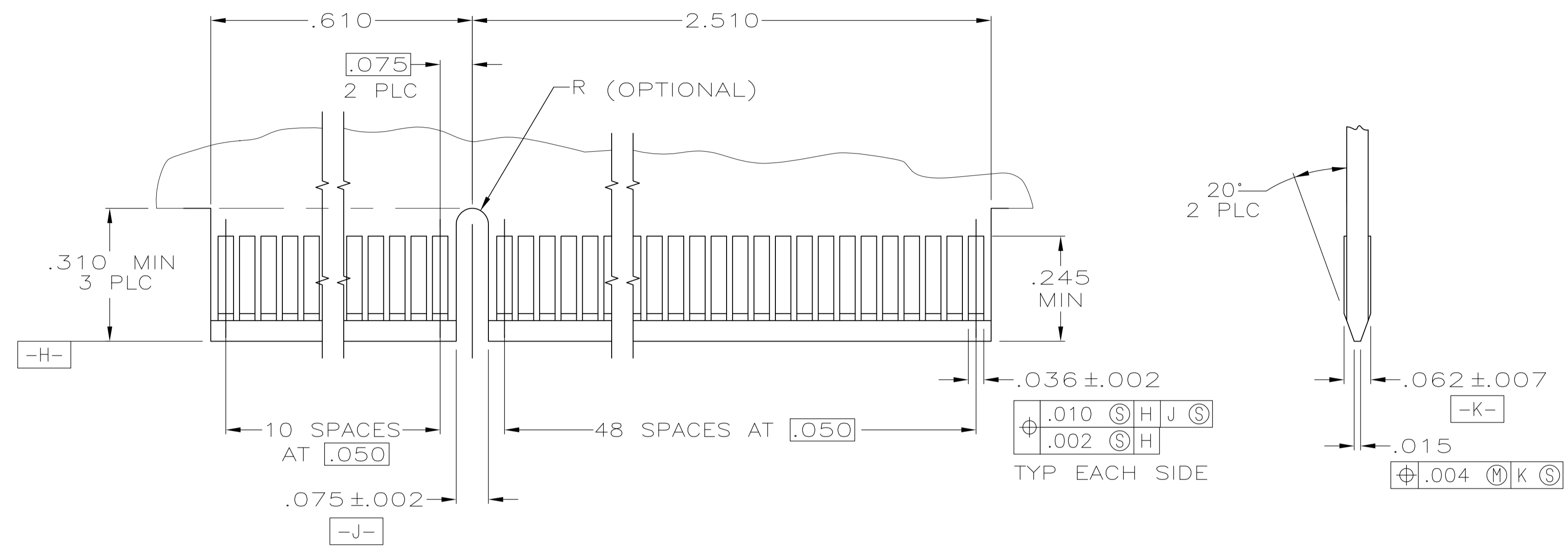
- 1 HOUSING: HIGH TEMPERATURE THERMOPLASTIC.
- 2 CONTACT: PHOSPHOR BRONZE.
- 3 CONTACT FINISH: .000100 MIN NICKEL ALL OVER, .000030 MIN GOLD OVER NICKEL IN CONTACT AREA, .000100 MIN MATTE TIN OVER NICKEL ON SOLDER TAILS.
- 4 METAL HOLD DOWN: BRASS
- 5 METAL HOLD DOWN FINISH: .000050 MIN NICKEL ALL OVER, .000150 MIN MATTE TIN ALL OVER.
- 6 DISTANCE FROM CONTACT POINT TO BOTTOM OF CARD SLOT.
- 7 AMP PART NUMBER, DATE CODE AND CSA LOGO MARKED IN APPROXIMATE AREA SHOWN.



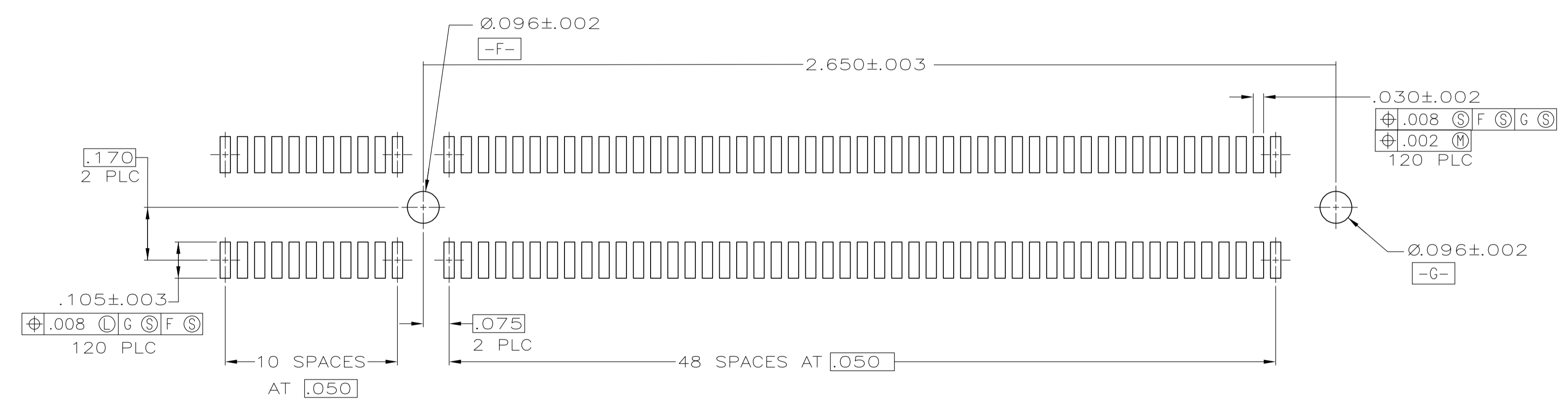
SECTION L-L
SCALE 8:1

145098-1 AS SHOWN

THIS DRAWING IS A CONTROLLED DOCUMENT.		DMN: AL FRANTUM 09 JUN 05	TE Connectivity
DIMENSIONS: INCHES		CHK: AL FRANTUM 09 JUN 05	
TOLERANCES UNLESS OTHERWISE SPECIFIED:		APVD: AL FRANTUM	NAME: CONNECTOR ASSEMBLY, 60 DUAL POSITION, .050 SERIES, STANDARD EDGE, SURFACE MOUNT
0. PLC ± -	1. PLC ± -	PRODUCT SPEC 108-14034	SIZE: A1
2. PLC ± -	3. PLC ± .005	APPLICATION SPEC 114-13148	CAGE CODE: 5145098
4. PLC ± -	ANGLES ± -	WEIGHT: -	RESTRICTED TO: -
MATERIAL: 1 2 4		CUSTOMER DRAWING	
FINISH: 3 5		SCALE: 4:1	SHEET 1 OF 2



RECOMMENDED MATING BOARD EDGE CONFIGURATION



RECOMMENDED PC BOARD PATTERN
(CONNECTOR SIDE SHOWN)

THIS DRAWING IS A CONTROLLED DOCUMENT.		DMN AL FRANTUM 09 JUN 05	 TE Connectivity	
DIMENSIONS: INCHES		CHK AL FRANTUM 09 JUN 05		
 TOLERANCES UNLESS OTHERWISE SPECIFIED: 0 PLC ± - 1 PLC ± - 2 PLC ± - 3 PLC ± .005 4 PLC ± - ANGLES ± ± °		APVD	NAME	
MATERIAL SEE SHEET 1		FINISH SEE SHEET 1	PRODUCT SPEC 108-14034 APPLICATION SPEC 114-13148 WEIGHT - CUSTOMER DRAWING	SIZE A1 CAGE CODE 00779 DRAWING NO 5145098 RESTRICTED TO - SCALE 4:1 SHEET 2 of 2 REV P