

UNDERVOLTAGE RELEASE, AC 400V/50HZ, AC 440V/60HZ WITH SPRING-L. CONNECTION, FOR CIRCUIT-BREAKERS 3RV2



General technical data:

product brand name		SIRIUS
Product designation		undervoltage release
Size of the circuit-breaker		S00, S0, S2
Design of the product		<kein Wert>
Suitability for use		motor circuit breaker
Protection class IP on the front		IP20
Design of short-circuit protection		fuse
Degree of pollution		3
Insulation voltage rated value	V	690
Insulation voltage with degree of pollution 3 rated value	V	690
Ambient temperature		
• during storage	°C	-50 ... +80
• during operation	°C	-20 ... +60
Equipment marking acc. to DIN 40719 extended according to IEC 204-2 acc. to IEC 750		F
Equipment marking acc. to DIN EN 61346-2		F

Auxiliary circuit:

Number of NC contacts for auxiliary contacts instantaneous contact		0
Number of NO contacts for auxiliary contacts instantaneous contact		0
Number of NO contacts for auxiliary contacts leading contact		0
Number of CO contacts of auxiliary contacts instantaneous contact		0

#### Control circuit/ Control:





<b>Type of voltage of the control supply voltage</b>		AC
<b>Control supply voltage frequency</b>		
• 1		
— rated value		<kein Wert>
— Initial rated value	Hz	50
— Final rated value	Hz	60
• 2 rated value		<kein Wert>
<b>Control supply voltage</b>		
• 1		
— at DC		
— rated value		<kein Wert>
— Initial rated value		<kein Wert>
— Final rated value		<kein Wert>
— at AC		
— at 50 Hz rated value	V	400
— at 50 Hz Initial rated value		<kein Wert>
— at 50 Hz Final rated value		<kein Wert>
— at 60 Hz rated value	V	440
— at 60 Hz Final rated value		<kein Wert>
— at 60 Hz Initial rated value		<kein Wert>
• 2		
— at DC rated value		<kein Wert>
— at AC		
— at 50 Hz rated value		<kein Wert>
— at 60 Hz rated value		<kein Wert>

#### Installation/ mounting/ dimensions:

<b>Mounting type</b>		snap-on mounting
<b>Width</b>	mm	18.5
<b>Height</b>	mm	90
<b>Depth</b>	mm	68
<b>Required spacing with side-by-side mounting</b>		
• forwards		<kein Wert>
• Backwards		<kein Wert>



<ul style="list-style-type: none"> <li>• upwards</li> <li>• downwards</li> <li>• at the side</li> </ul>	<kein Wert>	<kein Wert>	<kein Wert>
<b>Required spacing for grounded parts</b> <ul style="list-style-type: none"> <li>• forwards</li> <li>• Backwards</li> <li>• upwards</li> <li>• at the side</li> <li>• downwards</li> </ul>	<kein Wert>	<kein Wert>	<kein Wert>
<b>Required spacing for live parts</b> <ul style="list-style-type: none"> <li>• forwards</li> <li>• Backwards</li> <li>• upwards</li> <li>• downwards</li> <li>• at the side</li> </ul>	<kein Wert>	<kein Wert>	<kein Wert>

Certificates/ approvals:

<b>Certificate of suitability</b>		CE / UL / CSA	
<b>General Product Approval</b>	<b>Declaration of Conformity</b>	<b>Test Certificates</b>	<b>Shipping Approval</b>
 CSA	 UL	 EG-Konf.	 ABS
		<a href="#">Typprüfbescheinigung/Werkszeugnis</a>	<a href="#">spezielle Prüfbescheinigung</a> n

Shipping Approval

 BUREAU VERITAS	 DNV	 GL	 LRS	 PRS	 RINA
---	--	---	--	--	---

<b>Shipping Approval</b>	<b>other</b>	<b>Railway</b>
 RMRS	<a href="#">Umweltbestätigung</a>	 VDE
		<a href="#">Schwingen/Schocke</a> n
		<a href="#">Bestätigungen</a>

Further information

Information- and Downloadcenter (Catalogs, Brochures,...)  
<http://www.siemens.com/industrial-controls/catalogs>

Industry Mall (Online ordering system)  
<http://www.siemens.com/industrymall>

**Cax online generator**

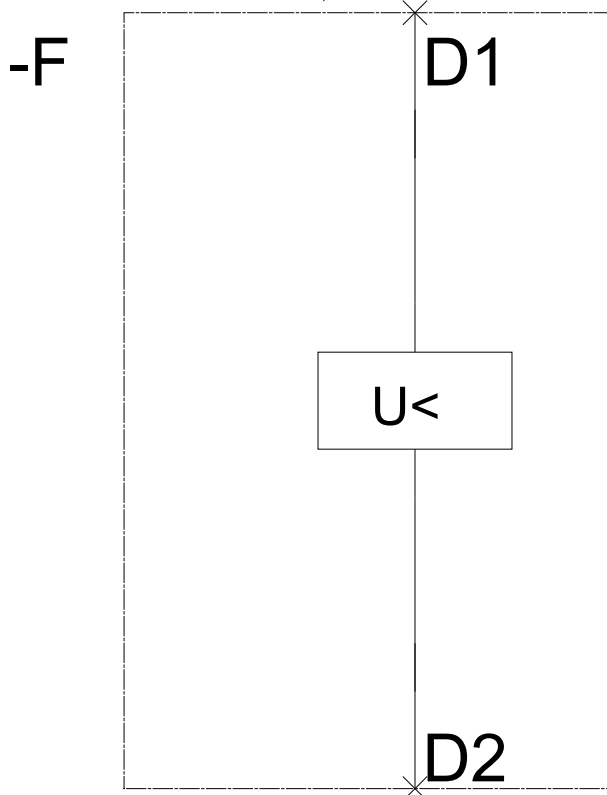
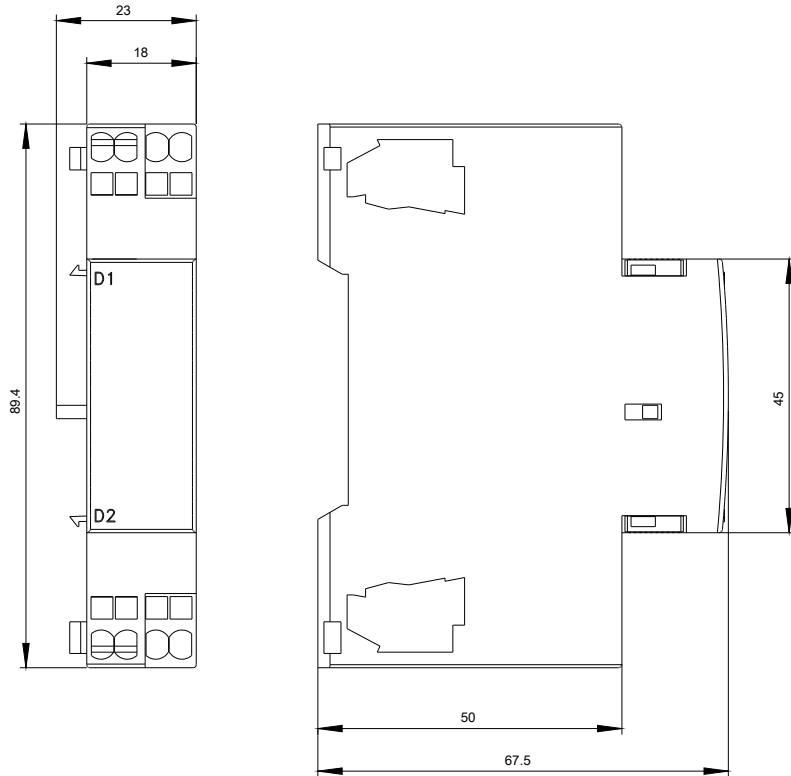
<http://support.automation.siemens.com/WW/CAXorder/default.aspx?lang=en&mfb=3RV29022AV0>

**Service&Support (Manuals, Certificates, Characteristics, FAQs,...)**

<https://support.industry.siemens.com/cs/ww/en/ps/3RV29022AV0>

**Image database (product images, 2D dimension drawings, 3D models, device circuit diagrams, EPLAN macros, ...)**

[http://www.automation.siemens.com/bilddb/cax\\_de.aspx?mfb=3RV29022AV0&lang=en](http://www.automation.siemens.com/bilddb/cax_de.aspx?mfb=3RV29022AV0&lang=en)



last modified:

07.12.2015