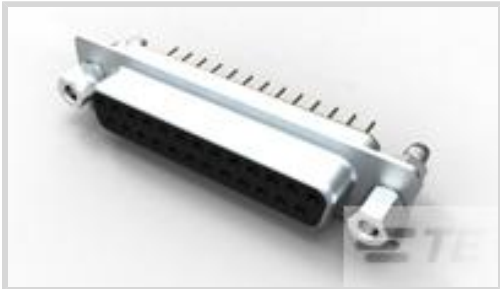




Connectors > D-Shaped Connectors > D-Sub Connectors > PCB D-Sub Connectors



Connector & Housing Type: **Receptacle**

Number of Positions: **37**

Centerline (Pitch): **2.77 mm**

Number of Rows: **2**

Row-to-Row Spacing: **2.84 mm [ .112 in ]**

Features

Product Type Features

Shell Material Configuration	Full Metal Shell
Ground Feature Type	Grounding Straps
Connector & Housing Type	Receptacle
Connector Shell Size	4
Connector & Contact Terminates To	Printed Circuit Board

Configuration Features

Number of Positions	37
Number of Rows	2
PCB Mount Orientation	Vertical

Body Features

Shell Plating Material	Nickel
Assembly Process Feature Material	Brass
Primary Product Color	Black

Contact Features

Contact Mating Area Plating Material	Gold (Au)
Contact Base Material	Phosphor Bronze
PCB Contact Termination Area Plating Material	Tin
	15 µin
Contact Options	Installed



Termination Features

Termination Post & Tail Diameter	.6 mm[.023 in]
Termination Post & Tail Length	5.2 mm[.204 in]

Mechanical Attachment

Mounting Hole Diameter	3.1 mm
PCB Mount Alignment	With
Assembly Process Feature Plating Material	Nickel
PCB Mount Retention	With
PCB Mount Retention Type	Boardlock
Mating Retention	With
Mating Retention Type	Threaded Insert, 4-40 UNC

Housing Features

Housing Material	Thermoplastic
Shell Material	Steel
Centerline (Pitch)	2.77 mm

Dimensions

PCB Thickness (Recommended)	1.57 mm[.062 in]
Row-to-Row Spacing	2.84 mm[.112 in]

Industry Standards

UL Flammability Rating	UL 94V-0
Compatible With Approved Standards Products	UL E28476

Packaging Features

Packaging Method	Tray
Packaging Quantity	40

Product Compliance

For compliance documentation, visit the product page on TE.com>

EU RoHS Directive 2011/65/EU	Not Compliant
EU ELV Directive 2000/53/EC	Not Compliant
China RoHS 2 Directive MIIT Order No 32, 2016	Restricted Materials Above Threshold
EU REACH Regulation (EC) No. 1907/2006	Current ECHA Candidate List: JAN 2025 (247)



Candidate List Declared Against: JUNE 2024 (241)

SVHC > Threshold:

Pb (.24% in Component Part)


Article Safe Usage Statements:  
Do not eat, drink or smoke when using this product. Wash thoroughly after handling. Recycle if possible and dispose of the article by following all applicable governmental regulations relevant to your geographic location.

Halogen Content	Low Halogen - Br, Cl, F, I < 900 ppm per homogenous material. Also BFR/CFR/PVC Free
Solder Process Capability	Wave solder capable to 265°C

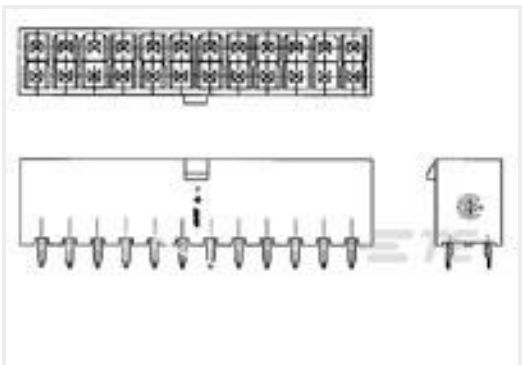
Product Compliance Disclaimer

This information is provided based on reasonable inquiry of our suppliers and represents our current actual knowledge based on the information they provided. This information is subject to change. The part numbers that TE has identified as EU RoHS compliant have a maximum concentration of 0.1% by weight in homogenous materials for lead, hexavalent chromium, mercury, PBB, PBDE, DBP, BBP, DEHP, DIBP, and 0.01% for cadmium, or qualify for an exemption to these limits as defined in the Annexes of Directive 2011/65/EU (RoHS2). Finished electrical and electronic equipment products will be CE marked as required by Directive 2011/65/EU. Components may not be CE marked. Additionally, the part numbers that TE has identified as EU ELV compliant have a maximum concentration of 0.1% by weight in homogenous materials for lead, hexavalent chromium, and mercury, and 0.01% for cadmium, or qualify for an exemption to these limits as defined in the Annexes of Directive 2000/53/EC (ELV). Regarding the REACH Regulation, the information TE provides on SVHC in articles for this part number is based on the latest European Chemicals Agency (ECHA) 'Guidance on requirements for substances in articles' posted at this URL: <https://echa.europa.eu/guidance-documents/guidance-on-reach>


Customers Also Bought



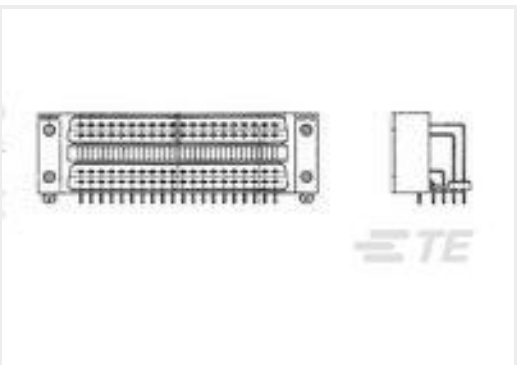
TE Part #1-1871673-3  
DYNAMIC 1200D HDR ASSY H 6P  
BLACK TIN




TE Part #2-1586038-2  
22P VRT HDR VAL-U-LOK V0




TE Part #1473226-1  
SOCKET WITH RING MINI U-M-N-L




TE Part #900412-2  
PC I/O RETENTION LEG ASSY 80P



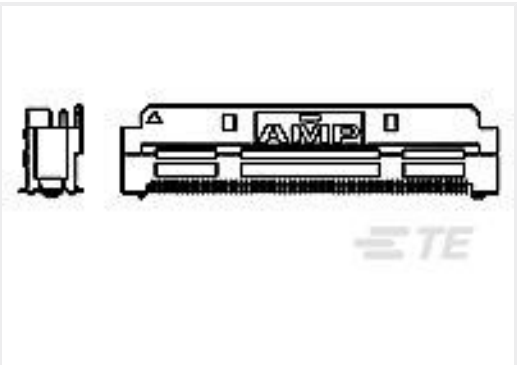
TE Part #2229093-1  
MOD JACK ASSEMBLY V-TYPE H=21.7mm



TE Part #1-2271457-8  
D3950 HDR 8POS 1ROW X KEY



TE Part #ASA021N00210235000  
623 PLUG



TE Part #1123677-1  
Z-STACK TYPE F16 ASSY 130P

1-1634225-2

37w D skt W B/L & 4-40 inserts 15u" gold



Documents

Product Drawings

37w D skt W B/L & 4-40 inserts 15u" gold

English

CAD Files

3D PDF

3D

Customer View Model

[ENG\\_CVM\\_CVM\\_1-1634225-2\\_H\\_c-1-1634225-2-h.2d\\_dxf.zip](#)

English

Customer View Model

[ENG\\_CVM\\_CVM\\_1-1634225-2\\_H\\_c-1-1634225-2-h.3d\\_igs.zip](#)

English

Customer View Model

[ENG\\_CVM\\_CVM\\_1-1634225-2\\_H\\_c-1-1634225-2-h.3d\\_stp.zip](#)

English

By downloading the CAD file I accept and agree to the [Terms and Conditions](#) of use.