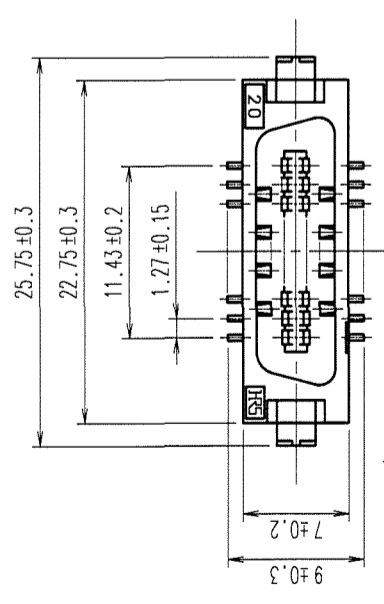
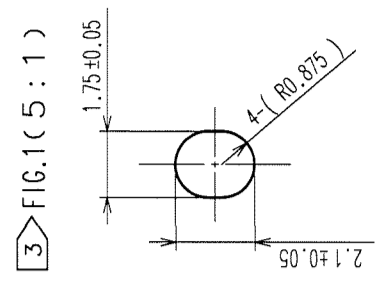
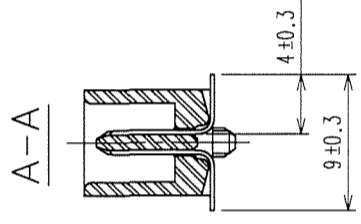
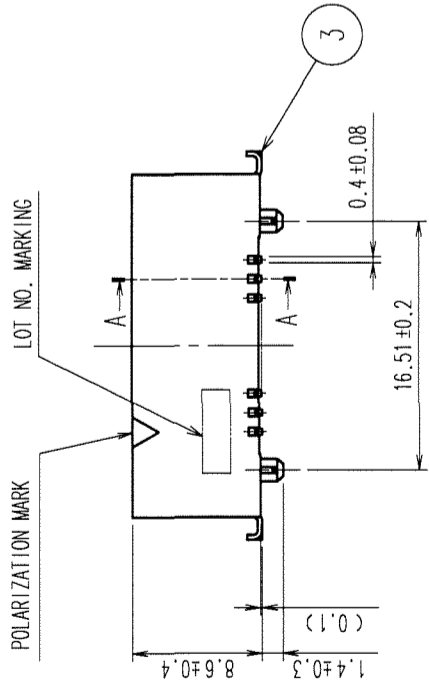
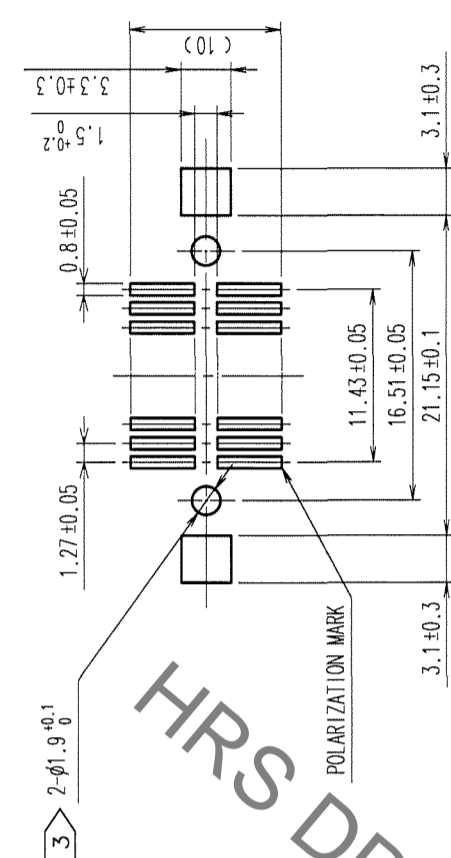


COUNT	DESCRIPTION OF REVISIONS	BY	CHKD	DATE	COUNT	DESCRIPTION OF REVISIONS	BY	CHKD	DATE
△					△				
△					△				
△					△				

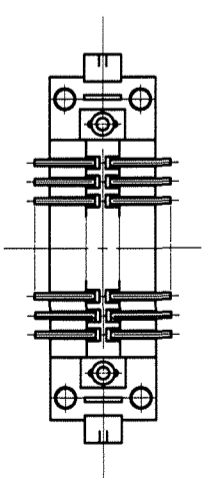


RECOMMENDED LAND PATTERN DIMENSION OF PCB (MOUNTING SIDE)



3 > FIG.1 (5 : 1)

- NOTES
- 1 LEAD CO-PLANARITY SHALL BE 0.15 MAX.
  - 2 THE DIMENSIONS IN PARENTHESES ARE FOR REFERENCE.
  - 3 > IN CASE OF THE AUTOMATED MOUNTING, RECOMMENDED HOLE DIAMETER OF BOSS IS SHOWN IN FIG.1.



3	BRASS	TIN-PLATING	2	PHOSPHOR BRONZE	CONTACT AREA: GOLD 0.2μm min.
1	PPS	LIGHT BROWN (UL94V-0)			LEAD AREA: TIN-PLATING 2μm min.
NO.	MATERIAL	FINISH, REMARKS	NO.	MATERIAL	UNDER PLATING: NICKEL 2μm min.
CODE NO. (OLD)	CL				FINISH, REMARKS
DRAWN		DESIGNED		CHECKED	
A. SUZUKAWA		Matsukawa		H. H. Kawara	
06.02.08		06.02.13		06.02.13	
SCALE		PART NO.		RELEASED	
2 : 1		FX2-20P-1.27SVL(71)			
UNITS		CODE NO.		1/1	
mm		CL572-2051-7-71			

TO  
PCK

HRS DRAWING FOR REFERENCE

