



ENGLISH

Datasheet

Stock No: 689-394

RS Pro Steel M5 Ball & Socket Joint, 28.5mm x 25mm



Product Details

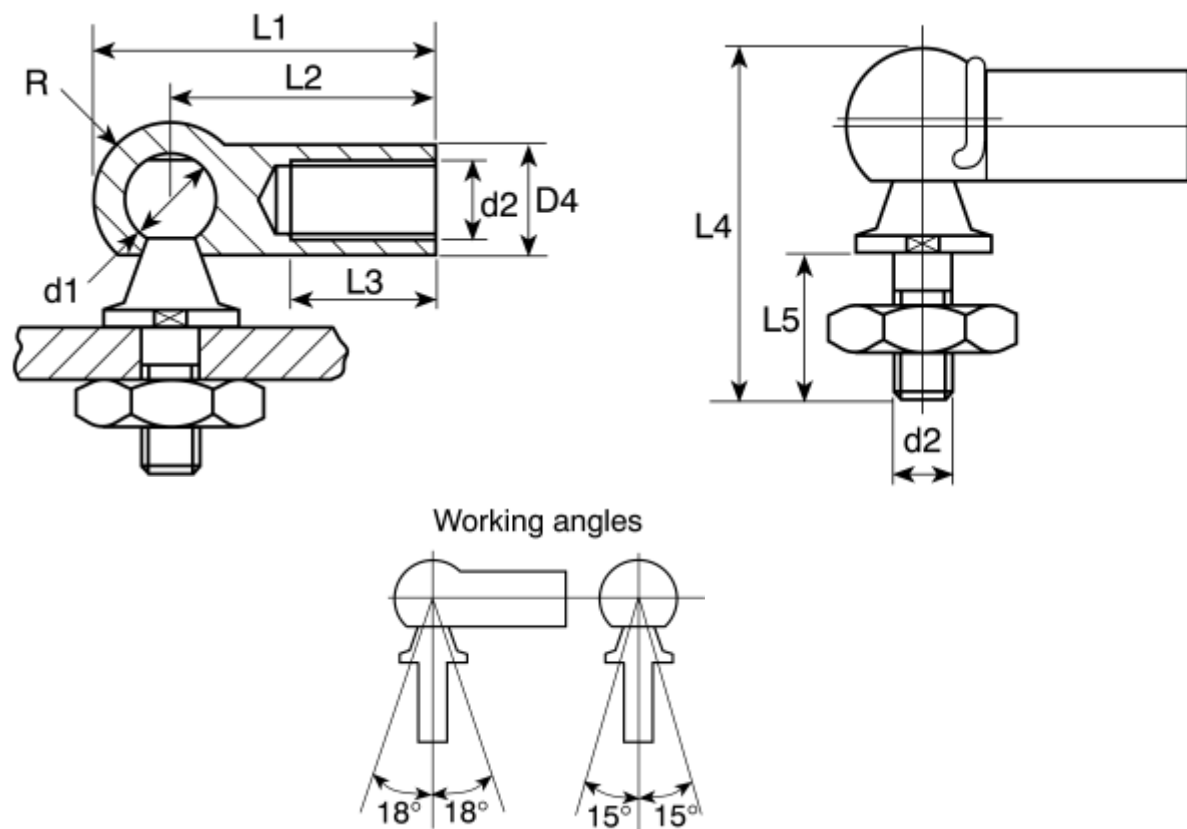
Ball and Socket Joints

Made to DIN71802 with zinc passivated finish
Induction hardened balls are wear resistant
Security clips retain ball studs in sockets
Static pull values for radial and axial loads
Supplied with locknut

Specifications:

Accessory Type	Ball & Socket Joint
Rod Connection Thread	M5
Ball Diameter	8mm
Overall Length	28.5mm
Overall Width	25mm
Material	Steel
Finish	Zinc

Dimensions:



Dimensions (mm)											
Size mm	D1	D2	D4	L1	L2	L3	L4	L5	R	A/F	min.pull-off force in N
5	8	M5	8	28.5	22	10.5	25	10.2	10.2	6.4	30
6	10	M6	10	32.5	25	11.5	30	12.5	7.5	8	40
8	13	M8	13	39.5	30	14.0	38	16.5	9.7	11	60
10	16	M10	16	47.0	35	15.5	47.5	20.0	12.0	13	80