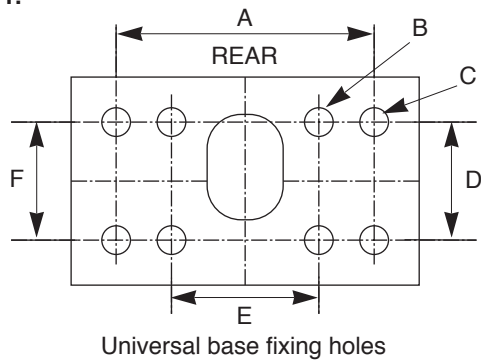




Industrial Machine/Bench Lamp

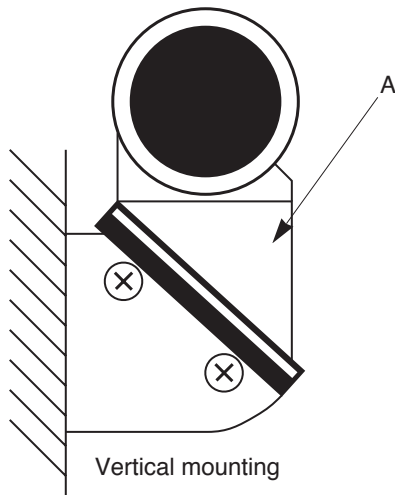
Stock No. 743-987

Figure 1.



- A. 63.50mm CRS
- B. 4 holes 7.14mm dia
- C. 4 holes 5.75mm dia
- D. 34.93mm CRS
- E. 35.72mm CRS

Figure 2.



- A. Keep swivel joint in horizontal position

General

This machine/bench light is supplied with a universal fixing base which can be mounted horizontally or vertically.

Lamp fitting

The luminaire is supplied with a diffuser and with a 16W 2D fluorescent lamp packaged separately. To fit the lamp remove the diffuser and sealing ring ensuring that the diffuser remains in the sealing ring.

Remove the lamp from its packaging. Hold the central plastic component of the lamp and push fit firmly into the lampholder. Ensure correct alignment between lamp and lampholder, engaging the lampholder locking clips. Refit the diffuser and sealing ring.

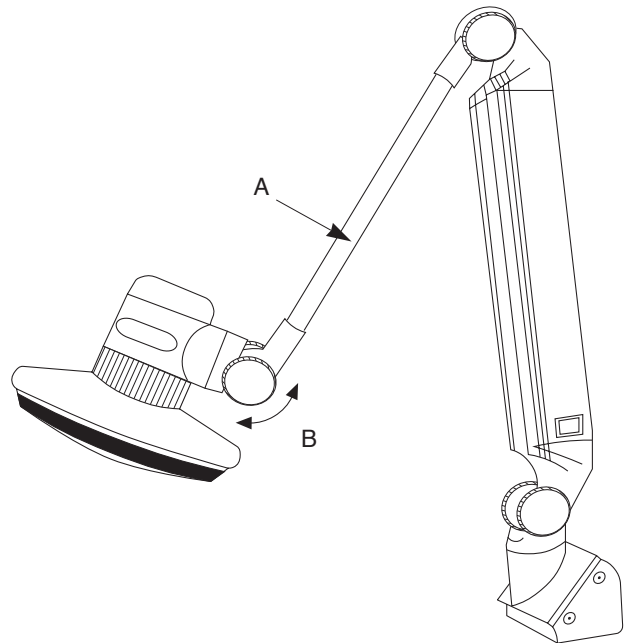
For a replacement 16W, 3500k, 2D lamp see **RS** stock no. 566-875.

Electrical connections

A three-way terminal block is provided in the base. Connect the incoming power cable to the terminal block as follows:

- Brown to L (live)
- Blue to N (neutral)

Figure 3.



- A. Arms 2 x 400mm length
- B. Adjustable knuckle joints

Green/yellow to E (earth)

Conduit connections

20mm diameter holes are provided in the back and bottom of the base for conduit entry. Use the plastic plug to blank off any hole not used. Dimples in the centre of each side of the base can be used to cut 20mm holes for side-mounting conduit.

Base sealing

A base gasket is supplied with four M5 self-tapping screws. Position the gasket between the underside of the base and the mounting surface. Fix the base down using the mounting screws, either by self tapping into plain 4.6mm diameter holes or directly into M5 threaded holes.

Knuckle joints

These have been set by the manufacturer to pre-determined torque levels, but can be adjusted to individual requirements by tightening or slackening the adjustable wheels marked with arrows.

Do not overtighten.

These products have been approved to EN60598 and sealed to IP20.

For a suitable bench clamp, refer to **RS** stock no. 744-003.

MAY CAUSE STROBOSCOPIC EFFECT IF USED WITH ROTATING MACHINERY.